

## Product Overview

Origins wall panels are designed for internal use, both in wet and dry rooms in commercial, domestic and public areas. They are predominately used in bathrooms, wet rooms, shower enclosures and areas that are exposed to water. They can also be used in several other applications requiring hygienic wall cladding.

## Features:

- + Available in 16 contemporary decors
- + High pressure laminate faces on exterior grade medium density fiberboard (MDF) for tongue and groove boards and WBP plywood substrate for square edge boards.
- + Each finish is available in three sizes:  
1200mm square edge, 900mm and 600mm
- + All wall panels are supplied 11mm thick
- + Minimal time and equipment required for installation
- + Hard wearing structural grade material
- + Multiple extrusions available
- + Low maintenance bathroom solution
- + New and extended warranty of 35 years

## Benefits

- + Add contemporary style to your space with a wide choice of decors inspired by the latest interior design trends
- + The printed paper design is impregnated with phenolic and melamine resins, dried and compressed to form a hard wearing high pressure laminate coating
- + Origins incorporate a tongue and groove click system (2400 x 600mm & 2400 x 900mm) providing a subtle, seamless finish and is an alternative to installing two panels with a straight joint profile.
- + Quick and easy to fit with the items in your toolbox. No specialist skills or equipment needed to install



Origins White Bonito Wall Panels

## Sizes

Origins wall panels are supplied in an 11mm thickness in three standard sizes:

### 2400mm x 600mm

(T&G design – 580mm actual panel width)

### 2400mm x 900mm

(T&G design – 880mm actual panel width)

### 2400mm x 1200mm

(Straight edge – 1180mm actual panel width)

Origins wall panels can also be cut to specific sizes to suit the customers' requirements.

## Weight

### MDF – 8.68 kilos per m<sup>2</sup>

2400mm x 600mm	13 kg
----------------	-------

2400mm x 900mm	20 kg
----------------	-------

### Plywood – 8 kilos per m<sup>2</sup>

2400mm x 1200mm	24 kg
-----------------	-------

- + Wall panels are made of structural materials, which means fixtures such as shower seats and grab rails can be fitted securely, without impacting weight loading
- + A wide variety of extrusions are available, offering a solution to any installation challenge you may face
- + Maintenance free, no need for additional grouting

## Construction

Origins tongue and groove panels are manufactured using a moisture resistant MDF core and the square edged panels using a 5-layer plywood core. The boards are bonded to HPL (high pressure laminate) to the front face and a backing HPL to reverse. The core is FSC certified and suitable for wet rooms, showers and areas with extremely high humidity.

The paper is impregnated with phenolic and melamine resins, dried and compressed to form a hard wearing, stable coating.

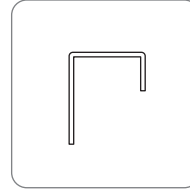
## Tolerances

- + Length +/- 1.5mm
- + Width +/- 0.5mm
- + Thickness +/- 0.5mm
- + Difference from level +/- 0.2mm
- + Curving Convex - 1.00mm
- + Curving Concave - 2mm

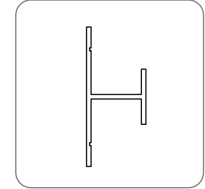
## Fitting

Panels can be installed directly onto a concrete wall, plasterboard or over existing tiles. Timber framing may be required to achieve the flat surface required for fitting.

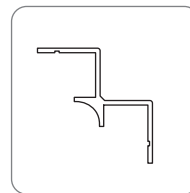
### Profile Types (2500mm long)



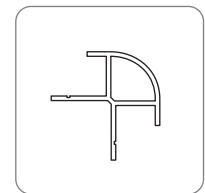
**End Cap**



**Straight Join  
(Continuous)**



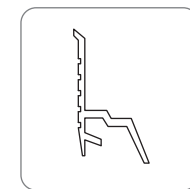
**Internal  
Corner**



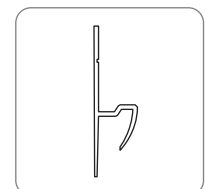
**External  
Corner**

The above are available in Chrome, White or SAA (satin anodised aluminium) as standard.

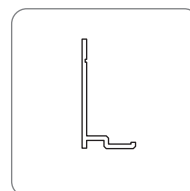
### Profile Types (3000mm long)



**PVC Bottom to  
Tray Profile**



**PVC Bottom to  
Vinyl Profile**



**Aluminium Bottom  
Tile Profile**

## Installation

It is essential that any exposed core material on the panels is covered. This is achieved by using aluminium wallboard sections (profiles), which must be sealed before fitting. Any screws used must be counter-sunk anti-corrosive, and panels must be adhered with a high tensile adhesive. All joints, including between panels and profiles must be sealed using sealant.

**Recommended adhesive:** Everbuild Stixall adhesive

**Recommended sealant:** Silicone

**Recommended screws:** No.6 x 18mm (3/4")

## Cutting

Origins tongue and groove panels are manufactured using a moisture resistant MDF core and the square edged panels using a 5-layer plywood core. If using a handsaw then cut with the decorative side face up, and if using a circular saw then the decorative side should be face down.

## Storage

Panels should be stored flat, covered and in a dry environment with the decorative surfaces facing each other. Being of timber construction, it is recommended that the panels are acclimatised within the area they are to be fitted for at least 3 days prior to install.

## Cleaning & Maintenance

The laminate surface is best kept clean by using a wet cloth and a mild detergent. On no account should scouring pads and harsh abrasive cleaning agents be used.

## Warranty



A 35-year warranty is offered on Origins wall panels on the condition they have been fitted as per the manufacturer's guidelines.



Alpino



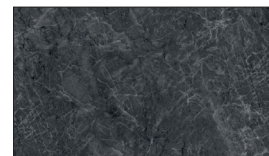
Beige Eiger



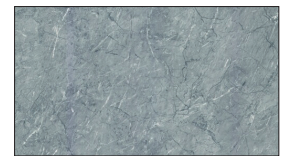
Arctic Shimmer



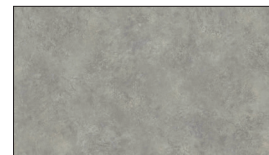
Blue Eiger



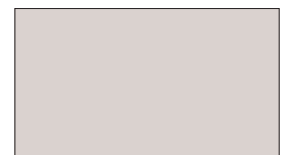
Black Bonito



Grey Bonito



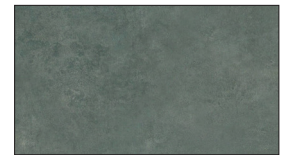
Cloudy Marble



Irish Cream Matt



Moonlight Shimmer



Oyster Marble



Toffee Marble



Travertino



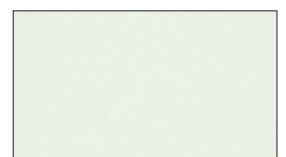
Warm Matt Grey



White Bonito



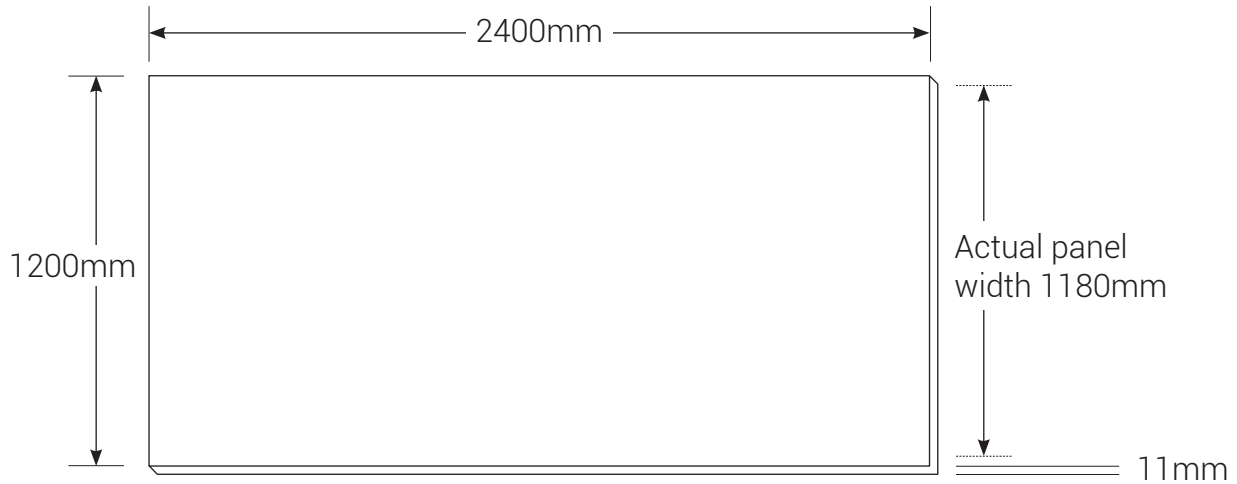
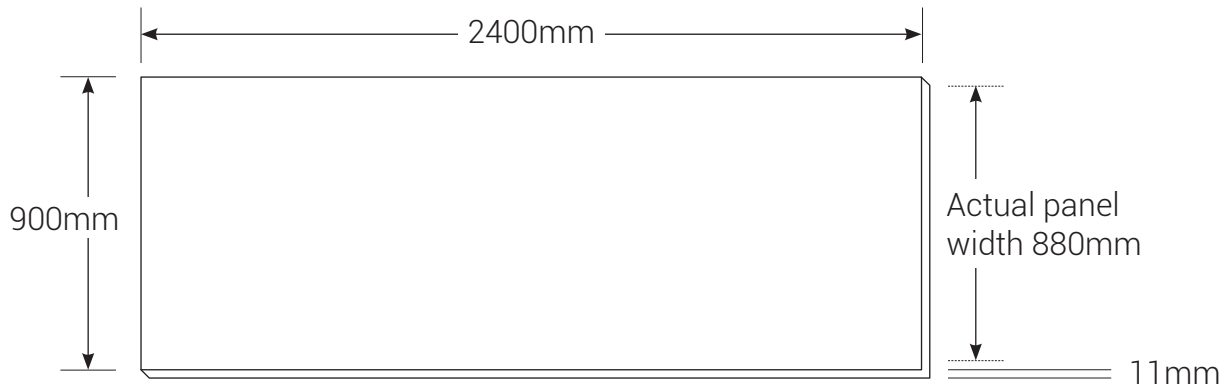
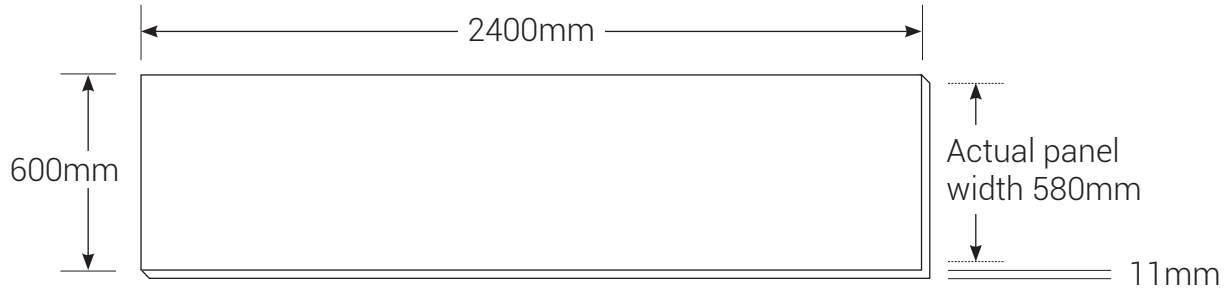
White Frost



White Gloss

Various stocked colours

**Dimensions**



## Product Codes

### Wall panels

27722ALP	Alpino 1200mm Square Edged 11mm Panel
27724ALP	Alpino 600mm T&G 11mm Panel
27723ALP	Alpino 900mm T&G 11mm Panel
27722ATS	Arctic Shimmer 1200mm Square Edged 11mm Panel
27724ATS	Arctic Shimmer 600mm T&G 11mm Panel
27723ATS	Arctic Shimmer 900mm T&G 11mm Panel
27722BGE	Beige Eiger 1200mm Square Edged 11mm Panel
27724BGE	Beige Eiger 600mm T&G 11mm Panel
27723BGE	Beige Eiger 900mm T&G 11mm Panel
27722BKB	Black Bonito 1200mm Square Edged 11mm Panel
27724BKB	Black Bonito 600mm T&G 11mm Panel
27723BKB	Black Bonito 900mm T&G 11mm Panel
27722BLE	Blue eiger 1200mm Square Edge 11mm Panel
27724BLE	Blue eiger 600mm T&G 11mm Panel
27723BLE	Blue eiger 900mm T&G 11mm Panel
27722CLM	Cloudy Marble 1200mm Square Edged 11mm Panel
27724CLM	Cloudy Marble 600mm T&G 11mm Panel
27723CLM	Cloudy Marble 900mm T&G 11mm Panel
27722GYB	Grey Bonito 1200mm Square Edged 11mm Panel
27724GYB	Grey Bonito 600mm T&G 11mm Panel
27723GYB	Grey Bonito 900mm T&G 11mm Panel
27722MLS	Moonlight Shimmer 1200mm Square Edged 11mm Panel
27724MLS	Moonlight Shimmer 600mm T&G 11mm Panel
27723MLS	Moonlight Shimmer 900mm T&G 11mm Panel
27722OSM	Oyster Marble 1200mm Square Edged 11mm Panel
27724OSM	Oyster Marble 600mm T&G 11mm Panel
27723OSM	Oyster Marble 900mm T&G 11mm Panel
27722TFM	Toffee Marble 1200mm Square Edged 11mm Panel
27724TFM	Toffee Marble 600mm T&G 11mm Panel
27723TFM	Toffee Marble 900mm T&G 11mm Panel
27722TRA	Travertino 1200mm Square Edged 11mm Panel
27724TRA	Travertino 600mm T&G 11mm Panel
27723TRA	Travertino 900mm T&G 11mm Panel

27722WBO	White Bonito 1200mm Square Edged 11mm Panel
27724WBO	White Bonito 600mm T&G 11mm Panel
27723WBO	White Bonito 900mm T&G 11mm Panel
27722WFS	White Frost 1200mm Square Edged 11mm Panel
27724WFS	White Frost 600mm T&G 11mm Panel
27723WFS	White Frost 900mm T&G 11mm Panel
27722WHT	White Gloss 1200mm Square Edged 11mm Panel
27724WHT	White Gloss 600mm T&G 11mm Panel
27723WHT	White Gloss 900mm T&G 11mm Panel
27722ICM	Irish Cream Matt 1200mm Square Edge 11mm Panel
27724ICM	Irish Cream Matt 600mm T&G 11mm Panel
27723ICM	Irish Cream Matt 900mm T&G 11mm Panel
27722WGM	Warm Grey Matt 1200mm Square Edge 11mm Panel
27724WGM	Warm Grey Matt 600mm T&G 11mm Panel
27723WGM	Warm Grey Matt 900mm T&G 11mm Panel

### Extrusions

27730	Polished Chrome Silver End Cap for 11mm Panels
27731	Polished Chrome Silver External Corner for 11mm Panels
27732	Polished Chrome Silver H Section for 11mm Panels
27733	Polished Chrome Silver Internal Corner for 11mm Panels
27719	Satin Anodised Aluminium End Cap for 11mm Panels
27717	Satin Anodised Aluminium External Corner for 11mm Panels
27718	Satin Anodised Aluminium H-Section for 11mm Panels
27716	Satin Anodised Aluminium Internal Corner for 11mm Panels
27729	Stixall Multi-Purpose Adhesive
27720	Transeal Profile for 11mm Panels
27728	White End Cap for 11mm Panels
27727	White External Corner for 11mm Panels
27726	White H-Section for 11mm Panels
27725	White Internal corner for 11mm Panels