

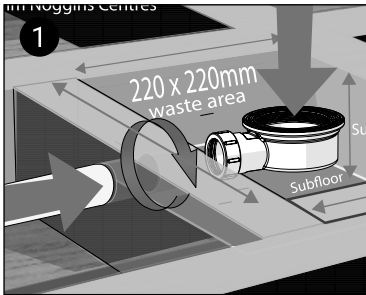
# 90mm Diameter Low Depth Dry Waste

## INSTALLATION INSTRUCTIONS

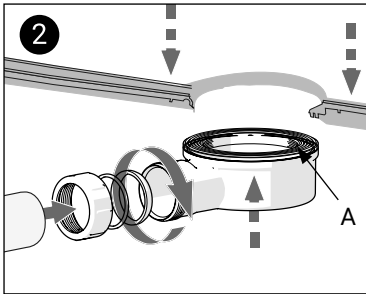


Read all instructions before installation and leave this document with the end user for future reference as it contains important warranty information

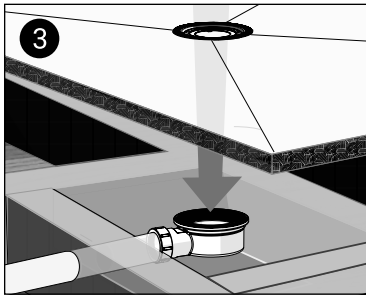
# Installation Instructions



**(1)** As a "dry run", first place the tray into the desired location and determine the position, the depth and the clearance required for the waste. Ensure there is sufficient support around the waste, see separate former or tray instructions.



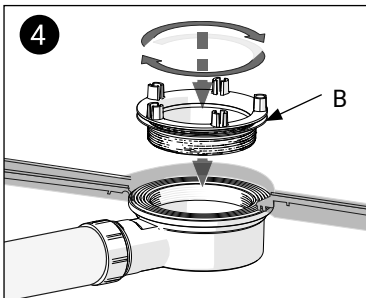
**(2)** Before fitting the waste, place the nut onto the waste pipe, followed by the backing ring and the seal. Insert waste pipe into the waste and tighten the nut. Check that the pipe connection is correctly assembled, sealed and watertight. Ensure that the seal **(A)** is positioned into the recessed section on the top of the waste body before connecting to the tray.



**(3)** Lower the tray into position over the waste.

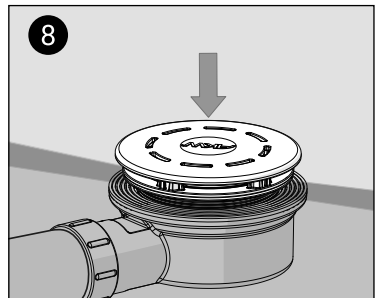
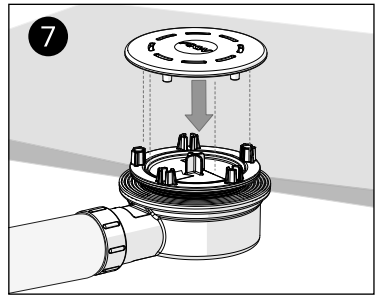
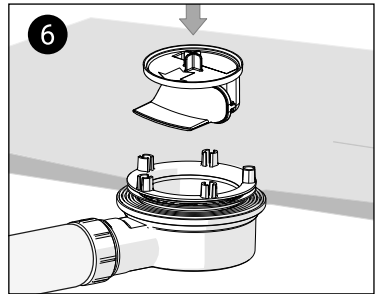
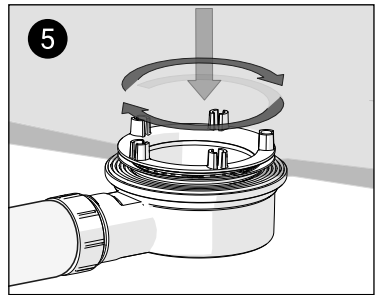
**(4)** Ensure the clamping ring seal **(B)** is fitted to the clamping ring.

**(5)** Screw the locking ring into the waste body on the top side of the tray. Do not over tighten.



**(6)** Lower the Dry Trap Non Return Valve into waste main body, making sure that the valve faces towards the waste outlet pipe.

**(7-8)** Temporarily cover the waste to prevent debris getting into it. Only when installation is complete fit the dome cover ensuring the location pegs are inserted into the locking ring.



Note: The valve must be pointed towards waste outlet.

AKW wastes are designed for low maintenance and reliable operation. The dry trap valve located inside should be checked as part of a planned maintenance programme.

## Keeping your wastes clean

This product should be cleaned periodically to remove any accumulation of hair or other waste material, using normal domestic bathroom cleaning materials.

To remove and clean the trap, first remove the cover to gain access to the dry trap valve.

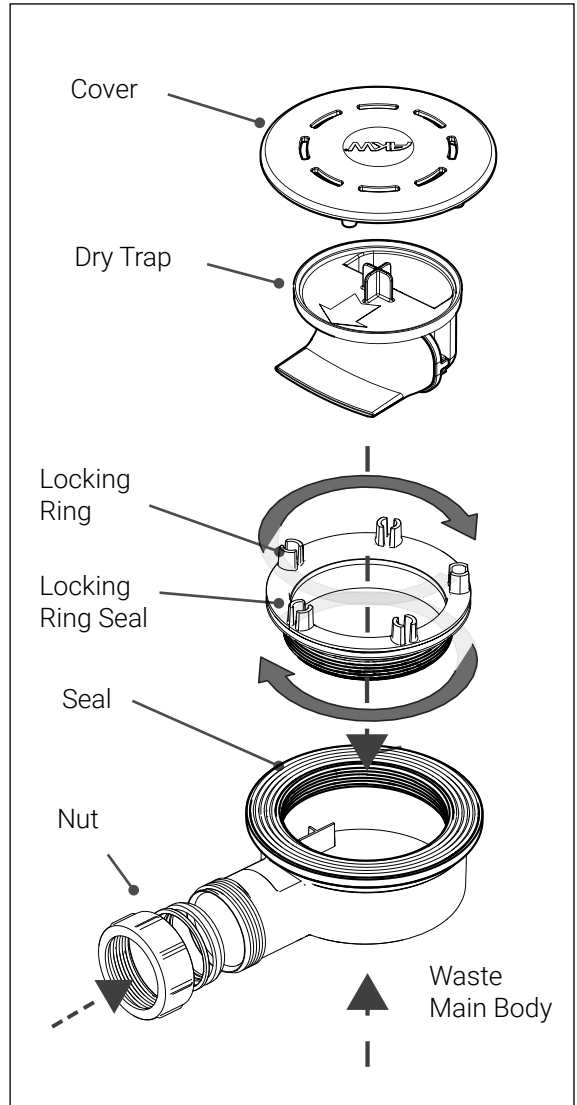
## Disinfecting

Where disinfecting is necessary, standard procedures for disinfecting equipment should be used, taking due care and attention to the warning signs concerning possible effects of aggressive chemicals on plastics. After cleaning, always flush down with water then wipe thoroughly with a damp cloth to remove any cleaning material residues before drying.

Do not use strong or concentrated acidic, alkaline or other cleaning materials as these may discolour or otherwise damage the product. Do not use abrasive cloths.

## Packaging

Wastes are supplied in a polypropylene (PP) bag to keep the product unsoiled until installation, it is also packed in a cardboard box. Both are suitable for recycling operations and should be disposed of in accordance with local recycling regulations.



## **Orders & Quotes**

01905 823 299  
orders@akw-ltd.co.uk

## **General Enquiries**

01905 823 298  
sales@akw-ltd.co.uk

## **Technical Enquiries**

01905 560 219  
technicalenquiries@akw-ltd.co.uk

## **Kitchen Enquiries**

01905 823 262  
kitchens@akw-ltd.co.uk

## **Fax**

01905 823 297

## **AKW**

Pointon Way, Hampton Lovett  
Droitwich Spa, WR9 0LR

**www.akw-ltd.co.uk**  
**orders.akw-ltd.co.uk**



## **Guarantee**

The guarantee only applies to manufacturing or material defects. This is conditional on the one-time correct installation of the product and does not apply to breakages, inappropriate use or accidental damage. This guarantee does not cover damage caused by the lack of maintenance including the build up of dirt, grime or damage caused by extreme temperature changes. This does not cover damage resulting from inappropriate cleaning or staining. This guarantee excludes general wear and tear through usage and does not apply to surface finishes or defects that result from unintended use or modifications.

## **What to do if something goes wrong?**

In the event that you should encounter a problem with this product, please contact your local installer and if this does not resolve the issue, then contact AKW technical team who will provide further advice and, if necessary, arrange for a maintenance engineer to visit and report any issues. See the T&Cs on our website or in our catalogue for further information. None of the foregoing affects your statutory rights.