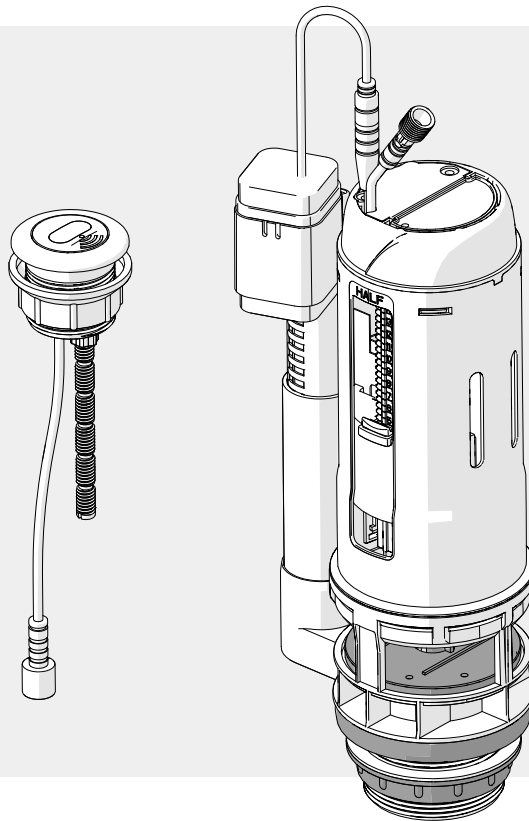


# Sensor Flush Valve

## INSTALLATION INSTRUCTIONS



Please read all instructions before installation and leave this document with the end user for future reference as it contains important warranty information

# Important Information

**Installation must be conducted by a qualified and competent installer, and in compliance with the Water Regulations.**

## Before you start

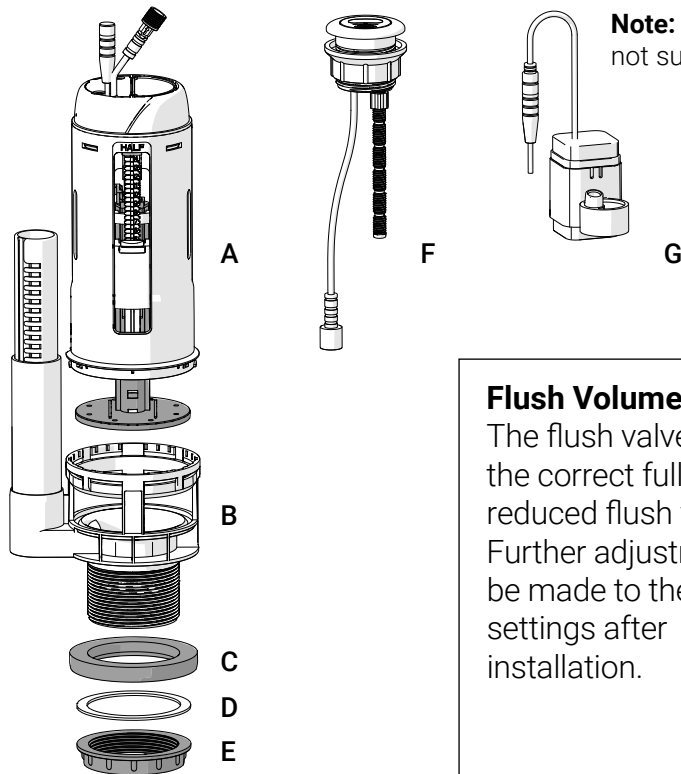
Please remove any protective covering and examine carefully. Check that all items are present before discarding of all packaging. Please notify the retailer immediately of any damage or faults. The manufacturer cannot be held responsible for any installation costs that may arise from damaged or faulty products being installed and not in accordance with these instructions.

- Careful handling should be taken at all times.
- Ceramic items must be protected from any contact with hard materials and impacts during installation.
- Carefully attach ceramics to a surface using fixings matched to the type of surface and the loading conditions to be applied and always use all fixings holes. Stainless steel fixings are recommended. Never install countersunk screws. Do not over-tighten fixings.
- Never use abrasive pads or abrasive cleaners as these will scratch the ceramic surface.

## Fitting the fill valve

- Installer - Please refer to the installation instructions supplied with the fill valve.
- Once the fill valve is correctly installed please continue to step 2.

## Flush Valve Installation & Parts Supplied

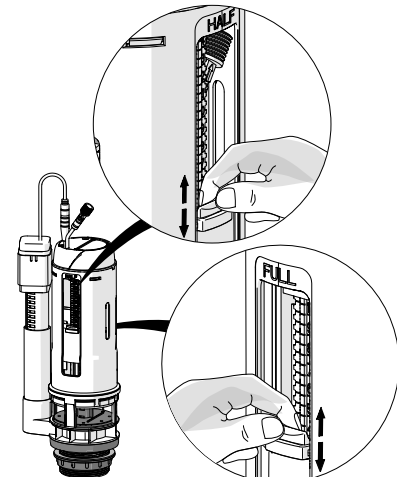


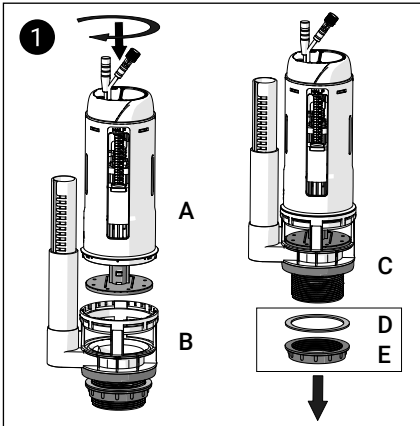
Parts	QTY	
A	Flush Valve Body	1
B	Flush Valve Housing	1
C	Rubber Seal	1
D	Washer	1
E	Nut	1
F	Sensor/Push Button	1
G	Battery Pack	1

Twist (A) to remove from (B) for maintenance and adjustment.

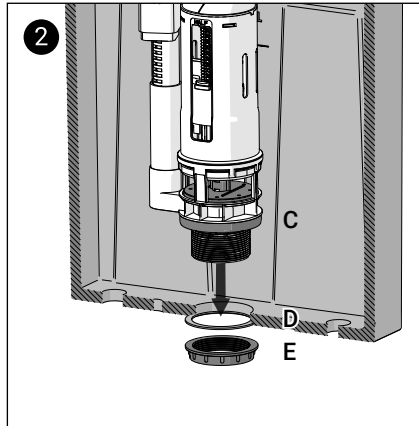
### Flush Volume Adjustment

The flush valve is preset to the correct full flush and reduced flush volumes. Further adjustment can be made to these settings after installation.

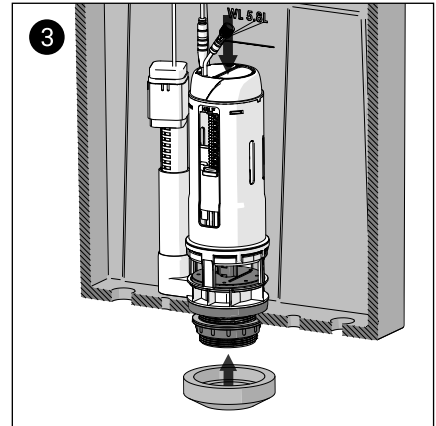




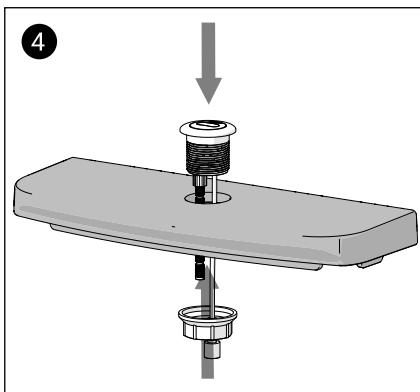
Ensure that the flush valve body (A) is assembled into the housing (B). Remove the nut (E) and washer (D) but ensure that the rubber seal (C) is still attached.



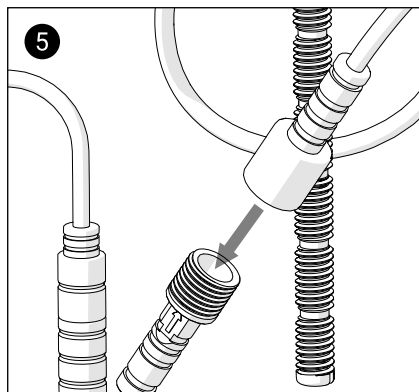
Install the flush valve into the cistern and refit the washer (D), nut (E) from underneath the cistern. Ensure that the rubber seal (C) is inside the cistern.



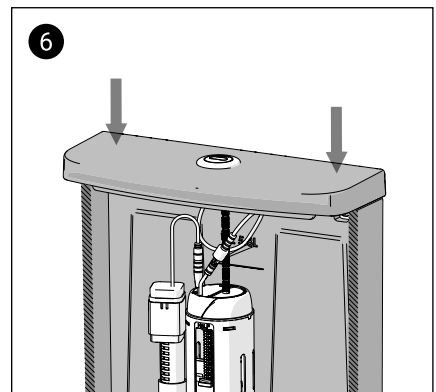
Push down on the valve and rubber seal, and securely tighten the nut. Do not over-tighten. Attach the gasket (not supplied) to the flush valve.



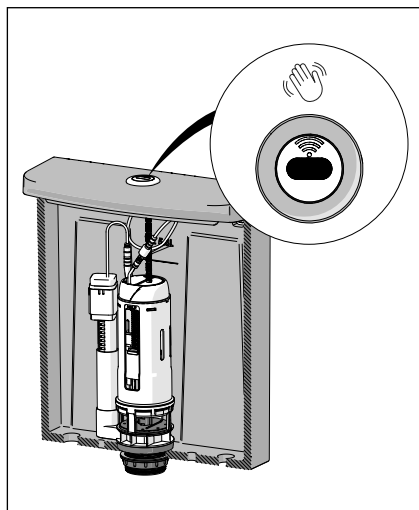
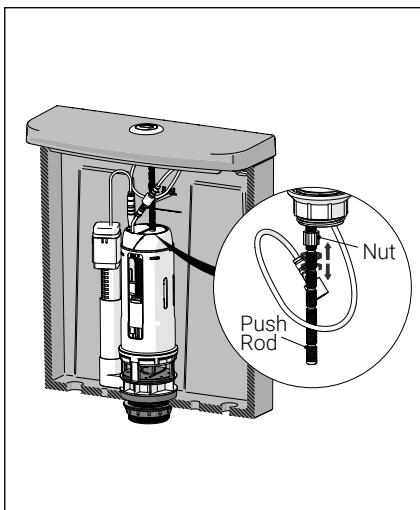
Remove the nut. Fit the push button (G) through the top of the cistern lid. Reattach the nut and secure the push button in place. Do not over-tighten.



Connect push button to the mechanism.



Lower the cistern lid into position.



The height of the button's push rod can be adjusted by rotating it. Make sure the bottom end of the rod is touching the manual activator button, and lock it in position by refitting the nut.

Dual flush can be activated by simply waving your hand over the sensor/push button for half flush, or holding it over for a few seconds for full flush. If for any reason the sensor is not working, push the button to physically activate the mechanism.

# Contact Us

**AKW**<sup>®</sup>  
Life Made Better

## Orders & Quotes

01905 823 299  
orders@akw-ltd.co.uk

## General Enquiries

01905 823 298  
sales@akw-ltd.co.uk

## Technical Enquiries

01905 560 219  
tech@akw-ltd.co.uk

## Kitchen Enquiries

01905 823 262  
kitchens@akw-ltd.co.uk

## Fax

01905 823 297

## AKW

Pointon Way, Hampton Lovett  
Droitwich Spa, WR9 0LR

[www.akw-ltd.co.uk](http://www.akw-ltd.co.uk)  
[orders.akw-ltd.co.uk](mailto:orders.akw-ltd.co.uk)

## Follow us on Social:



## Warranty

The warranty applies only to manufacturing or material defects, conditional on the one-time correct installation of the product.

It does not apply to:

- Inappropriate use or accidental damage.
- Damage or defects that result from incorrect installation.
- Lack of maintenance including the build up of grime or damage resulting from inappropriate cleaning.
- Damage or defects that result from repairs or modifications undertaken by unauthorised persons.
- This warranty excludes general wear and tear through usage and does not apply to surface finishes.

## What to do if something goes wrong?

If you have a problem with this product, please contact your local installer. If this does not resolve the issue, contact the AKW Technical Enquiries who can provide further advice and, if necessary, arrange for a maintenance engineer to visit and report any issues. See the T&Cs on our website or catalogue for further information. None of the foregoing affects your statutory rights.