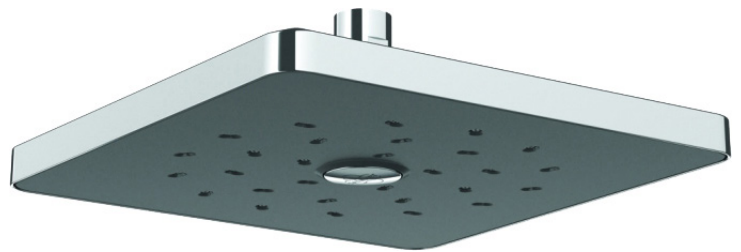
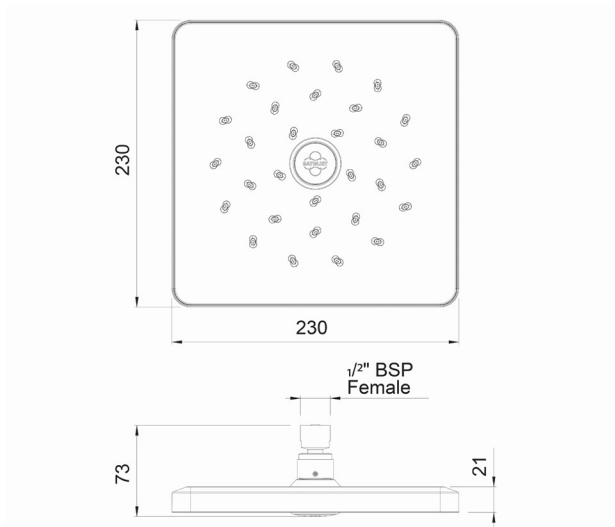


## SATINJET 230MM SQUARE OVERHEAD



**CONSTRUCTION:** Brass & ABS  
**SUPPLY:** Suitable For Low Pressure Systems  
**INLET CONNECTIONS:** 1/2" BSP  
**WORKING PRESSURES:** 0.3 - 5.0 bar  
**CARTRIDGE/VALVE TYPE:** N/A

- Swivel Joint
- Supplied With 9L/Min Flow Limiter
- Water Efficient Without Compromising Performance
- Satinjet® Technology Twin Jets Of Water Collide Into Thousands Of Tiny Droplets To Deliver Voluminous Shower Coverage
- 5 Years Warranty On The Outer Finish

### OSQ230CP

### Chrome & Graphite

#### Open Outlet Flow (Bar - l/min)

BAR	0.1	0.3	0.5	1.0	2.0	3.0	4.0	5.0
HANDSET FLOW	3.7	5.2	6.7	8.9	9.6	9.2	9.5	9.6



2005714



2005318



Please Note: Flow rate will be dictated by installation configurations.  
 Please ensure to check the appropriate flow restrictor information if applicable.  
 \*Please refer to website for full warranty details.

**FREEPHONE: 0800 195 1602 | FAX ORDERS: 08444 068 690 | EMAIL: SALES@UK.METHVEN.COM**

[methven.com](http://methven.com)

THE INFORMATION ON THIS SPECIFICATION DOCUMENT WAS CORRECT AT THE DATE OF ISSUE. SOME VARIATION MAY OCCUR DUE TO THE MANUFACTURING TOLERANCES AND SITE SPECIFIC CONDITIONS.