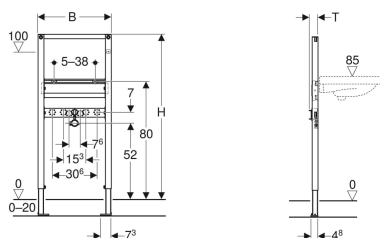


Geberit Duofix frame for washbasin, 112 cm, deck-mounted tap



Example image

Application purposes

- For drywall construction
- For installation in part or room-height prewall installations
- For installation in room-height installation walls
- For installation in part or room-height Geberit Duofix system walls
- For installation of washbasins
- For deck-mounted taps
- For floor constructions 0–20 cm

Characteristics

- Statically self-supporting frame, protected against corrosion with powder coating
- Frame with $\varnothing 9$ mm drilling holes for fastening in wood frame construction
- Galvanized feet

Scope of delivery

- 2 wall anchors
- 2 angle stop valves 1/2"
- 2 elbow tap connectors Rp 1/2" / R 1/2", compatible with MF
- 2 sealing washers

- Feet adjustable 0–20 cm
- Non-slip leg supports
- Rotatable foot plates
- Foot plate depth suitable for installation in U-profiles UW 50 and UW75 and Geberit Duofix system rails
- Fastening distance for washbasin 5–38 cm
- Fastening for connection bend, height-adjustable and sound-absorbing
- Crossbar for tap adjustable in height and depth
- Self-adhesive sealing washer, fleece-laminated
- Protection plug for one-time pressure test with cold water up to a maximum of 15 bar / 1500 kPa

Technical data

Product material

Steel

| Art. no. | B | H | T |
|--------------|-------|--------|------|
| 111.495.00.1 | 50 cm | 112 cm | 6 cm |

Accessories

- Geberit Duofix fastening for washbasins with fastening distance 38–58 cm
- Geberit Duofix set of wall anchors for single installation
- Geberit Duofix set of wall anchors for single and system installation
- Geberit Duofix fastening material for stud clearance 50–57.5 cm
- Geberit Duofix set of foot extensions for floor construction 20–40 cm



- Any boarding must be fixed tight up against the face of the Duofix frame and screwed directly to the frame