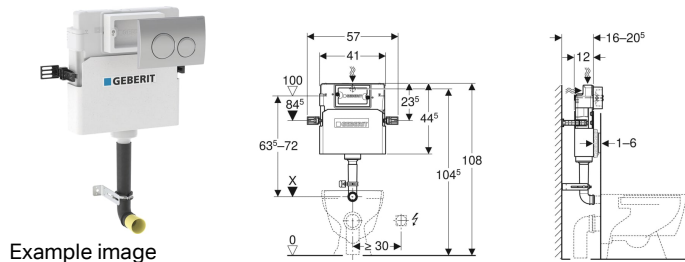


## Geberit Delta concealed cistern 12 cm, 6/3 litres, with Delta20 flush plate



Example image

### Application purposes

- For drywall construction
- For installation in part or room-height prewall installations
- For installation in room-height installation walls
- For floor-standing WCs

### Characteristics

- Concealed cistern with front actuation
- Concealed cistern, fully insulated against condensation
- Cistern fulfils standard requirements in accordance with EN 14055, Class II

- Immediate post flush possible with factory setting
- Flush bend fitted
- Water supply connection on the rear or top centre
- Connection hose on angle stop valve can be attached without tools

### Technical data

Flow pressure	0.1–10 bar
Operating temperature, water max.	25 °C
Flush volume, factory setting	5.8 / 3 l
Flush volume small, adjustment range	2–4 l
Product material	Plastic

### Scope of delivery

- Angle stop valve R 1/2", compatible with MF, with adapter ring
- Protection box for service opening, made of polystyrene foam
- Geberit Delta20 flush plate for dual flush
- 2 distance bolts
- Flush bend 90°
- Protection plug
- Fastening for flush bend
- Flush bend extension, ø 45 mm
- 2 fixing brackets
- Fastening material

Art. no.	Colour / surface	B	H	T
109.103.21.2	gloss chrome-plated	41 cm	44.5 cm	12 cm



- Flush valve features settings to enable either a 6 l and 3 l flush, 4.5 l and 3 l flush or a 4 l and 2.6 l flush. Note: must be used with pans designed for low volume flush.