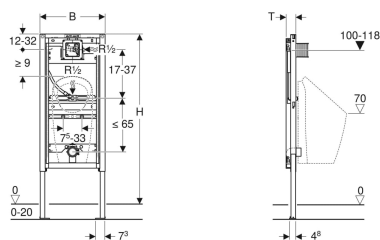


Geberit Duofix frame for urinal, 112–130 cm, universal, for spray head



Example image



Application purposes

- For drywall construction
- For installation in part or room-height prewall installations
- For installation in room-height installation walls
- For installation in part or room-height Geberit Duofix system walls
- For mounting urinals
- For Narva urinals
- For installation of Geberit urinal flush controls (from year of manufacture 2009)
- For floor constructions 0–20 cm

Characteristics

- Statically self-supporting frame, protected against corrosion with powder coating
- Frame with $\varnothing 9$ mm drilling holes for fastening in wood frame construction
- Galvanized feet
- Feet adjustable 0–20 cm
- Non-slip leg supports
- Rotatable foot plates
- Foot plate depth suitable for installation in U-profiles UW 50 and UW75 and Geberit Duofix system rails
- Element height adjustable to urinal, 112–130 cm
- Connection positions for Preda urinal prepared
- Universal concealed housing for Geberit urinal flush controls
- Terminal for electrical connection in concealed housing

- Water supply connection on the right, on the concealed housing
- Water supply connection compatible with MasterFix and MeplaFix
- Elbow connector can be mounted without tools
- Premounted stop valve with throttle
- With built-in conduit pipe to rinse the pipeline
- Protection box for service opening 10.5 x 10.5 cm can be cut to length without tools
- Flush hose can be bent
- Flush hose with guide to prevent standing water
- Fastening for inlet Rp 1/2", adjustable in height and sideways
- Fastening for connection bend, height-adjustable and sound-absorbing
- Urinal fasteners M8 width- and height-adjustable
- Crossbars with centring marks, adjustable without tools
- Markings for connection positions of Preda and Selva urinals
- Additional fastening possible for urinal with accessories

Technical data

Flow pressure	1–8 bar
Test pressure, water max.	16 bar
Test pressure, air / inert gas max.	3 bar
Operating temperature, water max.	30 °C
Flow rate at 1 bar without flow limiter	0.3 l/s
Flow rate at 1 bar with flow limiter	0.18 l/s
Product material	Steel

Scope of delivery

- Elbow tap connector R 1/2"
- Protection box with cover
- Protection plug
- Connection bend made of PE-HD, $\varnothing 63 / 50$ mm
- Protective cap
- Seal $\varnothing 57 / 50$ mm
- Urinal trap $\varnothing 50$ mm, with seal on urinal
- 2 threaded rods M8
- Fastening material

Art. no.	B	H	T
111.676.00.1	50 cm	112–130 cm	7.5 cm

Accessories

- Geberit inlet crossbar for urinal, with spray head
- Geberit Duofix set of wall anchors for single installation
- Geberit Duofix set of wall anchors for single and system installation
- Geberit Duofix fastening material for stud clearance 50–57.5 cm
- Geberit Duofix set of foot extensions for floor construction 20–40 cm



- Refer to your local water authority for further guidance on compliance to UK water regulations
- Suitable for urinals with a 1/2" threaded inlet connection
- Can be used for mains or tank fed water supply
- Any boarding must be fixed tight up against the face of the Duofix frame and screwed directly to the frame
- Can be operated with used water (rainwater) provided it is passed through a filter system first