

Rimless close coupled ambulant Doc M toilet pack, steel, concealed fixings



Product details

Warranty:	See individual products
Maximum load:	See individual products
Doc M compliant:	Yes
Suitable for wet areas:	No

Features

- Complies with Part M of the Building Regulations
- Hygienic rimless pan with robust dedicated seat
- Inlet valve and syphon Reg 4 Certified (WRAS, NSF, Kiwa, etc.)
- Lockable cistern as default (F20-AMLX-MS-**)
- Concealed fixing grab rails
- Simple one box solution

Finish options

WH

White
RAL 9016

DB

Dark blue
RAL 5011

DG

Dark grey
RAL 7016

GY

Grey
RAL 7005

Product description

Rimless close coupled ambulant Doc M toilet pack, lockable cistern, steel, concealed fixings

Product code

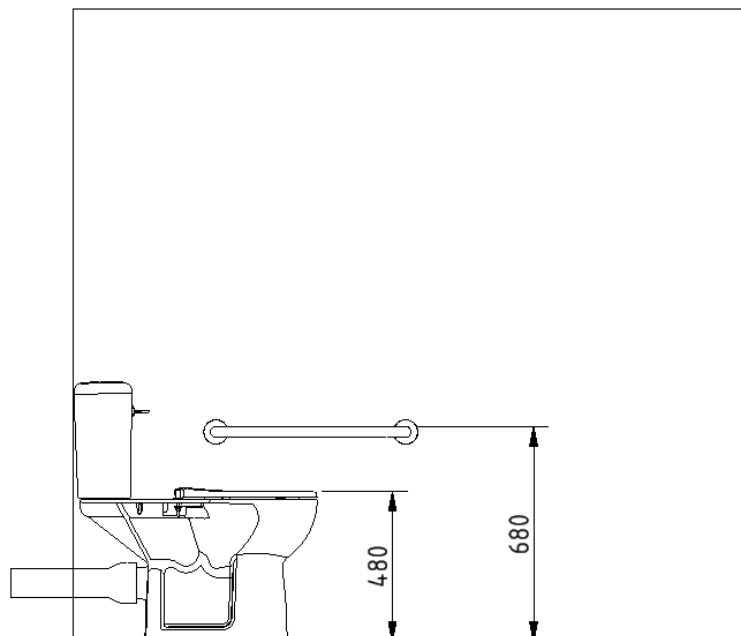
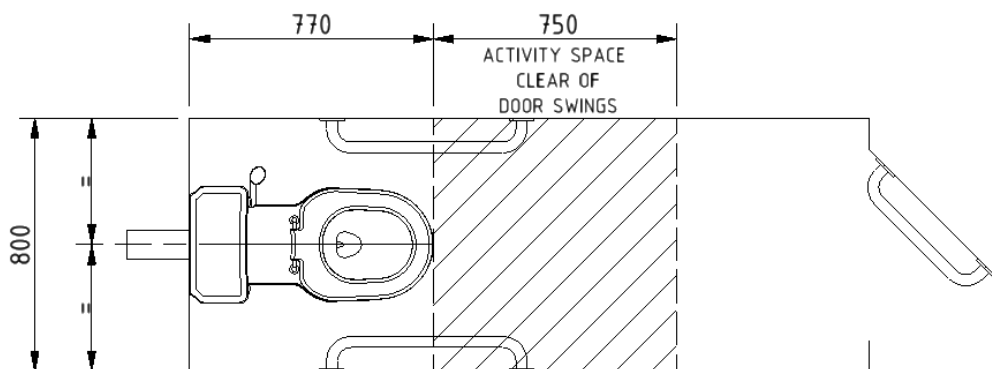
F20-AMLX-MS-**

Replace ** with finish option code above e.g., F20-AMLX-MS-DB

Pack contents

- 2 x 600mm coated steel grab rails with concealed fixings
- 1 x 450mm coated steel grab rail with concealed fixings
- 1 x Close coupled rimless Doc M pan
- 1 x Close coupled cistern for rimless pan (lockable lid as default)
- 1 x Close coupled cistern fitting pack with Doc M spatula lever
- 1 x Ring only toilet seat

Dimensions (mm)



Disclaimer

NYMAS Group makes every effort to ensure that the information provided on this data sheet is correct. However, we cannot guarantee this, and accept no liability for any information or advice given on this data sheet.

Close coupled rimless Doc M pan



Product details

Warranty:	Lifetime
Maximum load:	400 kg
Doc M compliant:	Yes
Suitable for wet areas:	Yes

Features

- Extended projection to comply with Part M of the Building Regulations
- Rimless design for ease of cleaning
- Comfort height to allow easier side transfer from wheelchair
- UKCA & CE compliant
- Ceramic body

Finish options

WH

White
RAL 9016

Product description

Close coupled rimless Doc M pan

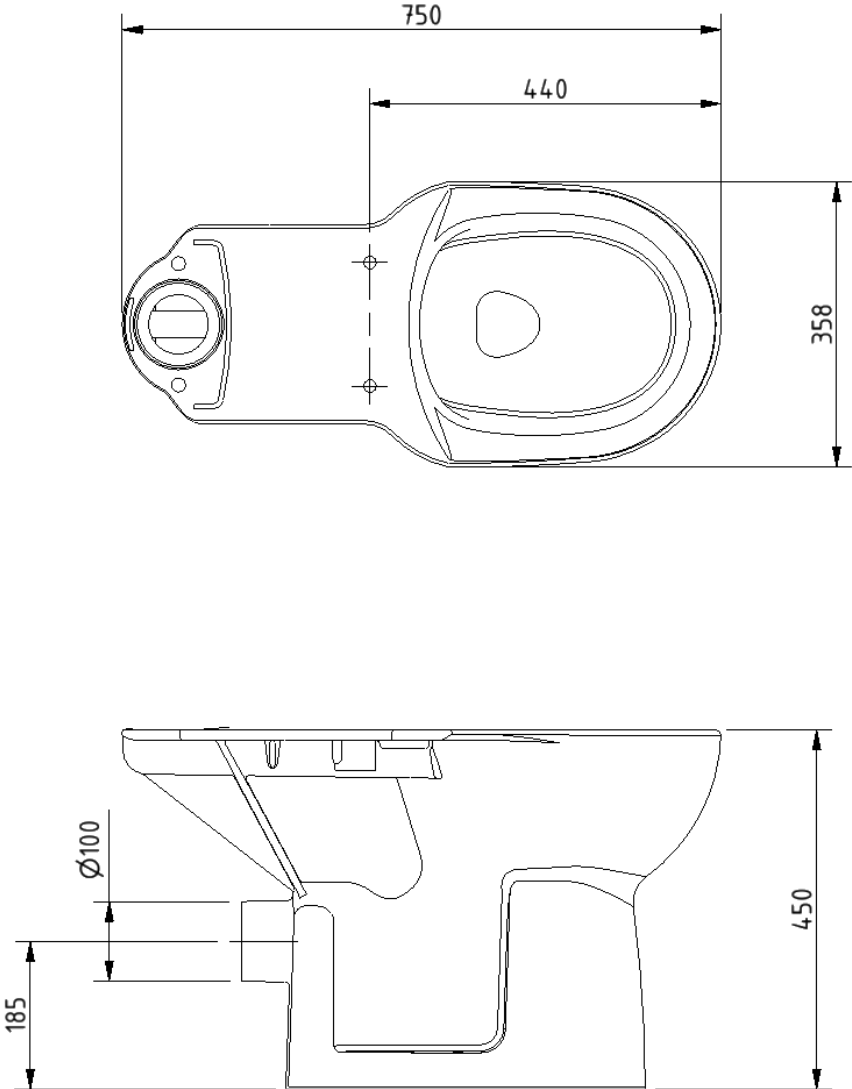
Product code

NY01-PANCC02-WH

Disclaimer

NYMAS Group makes every effort to ensure that the information provided on this data sheet is correct. However, we cannot guarantee this, and accept no liability for any information or advice given on this data sheet.

Dimensions (mm)



Close coupled minimal cistern tank



Product details

Warranty:	Lifetime
Max rated load:	n/a
Doc M compliant:	Yes
Suitable for wet areas:	Yes

Features

- Modern minimal design
- Complies with Part M of the Building Regulations
- UKCA & CE compliant
- Suitable for front lever
- Bottom inlet
- Universal - either left or right handed
- Lockable lid option

Finish options

WH

White
RAL 9016

Product description

Minimal close coupled cistern, white

Minimal close coupled cistern with lockable lid, white

Product code

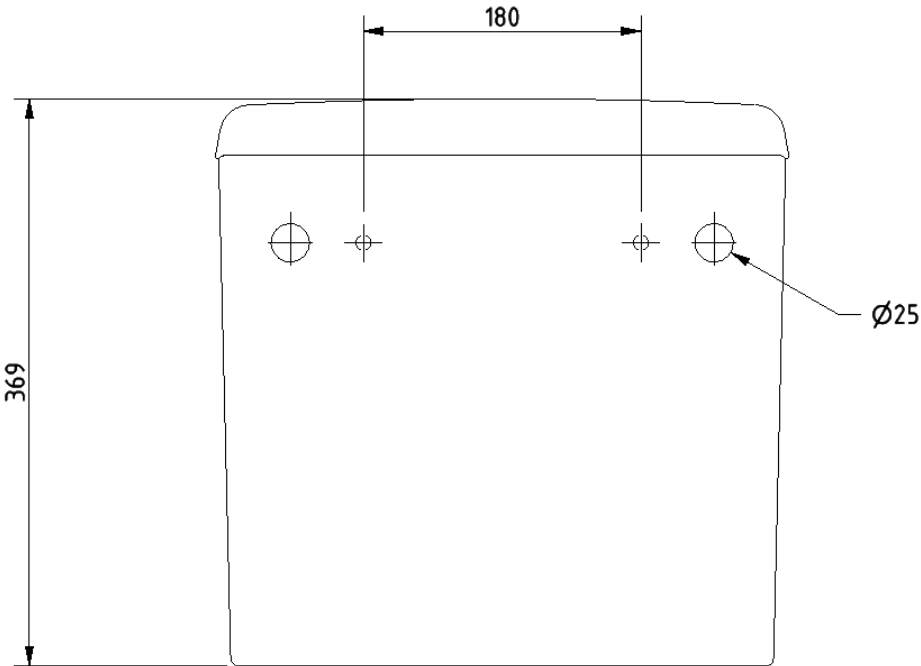
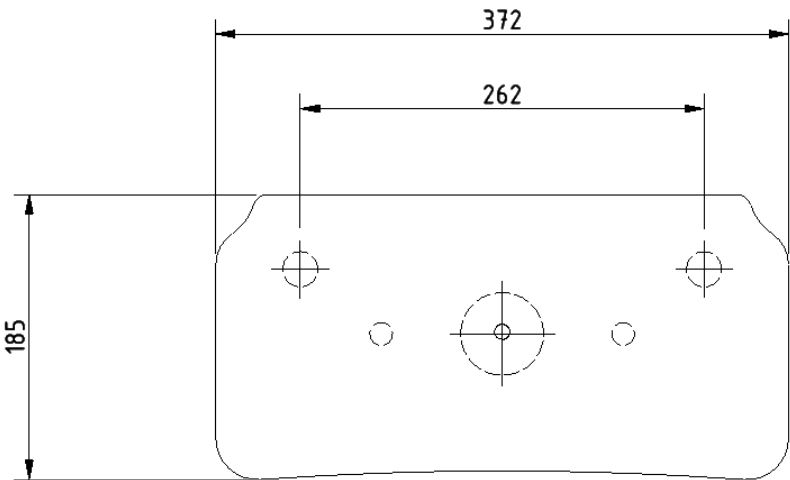
BWCISTCC-SAN

BWCISTCC/LC-SAN

Disclaimer

NYMAS Group makes every effort to ensure that the information provided on this data sheet is correct. However, we cannot guarantee this, and accept no liability for any information or advice given on this data sheet.

Dimensions (mm)



Cistern fitting pack for close coupled rimless pan



Product details

Warranty:	2 years
Max rated load:	n/a
Doc M compliant:	Yes
Suitable for wet areas:	Yes

Features

- Inlet valve and syphon Reg 4 Certified (WRAS, NSF, Kiwa, etc.)
- Can provide both full and half flush
- Doc M spatula lever to provide easy operation for users with limited dexterity
- 6 litre flush

Product description

Cistern fitting pack for close coupled rimless pan, includes lever and basin waste

Product code

SANCCPK-4

Pack contents

- 1 x Inlet valve
- 1 x Syphon
- 1 x Doc M spatula lever
- 2 x Cistern blanking plugs
- 1 x Close coupled fixing bolts
- 1 x Tap hole stopper
- 1 x Basin waste

Disclaimer

NYMAS Group makes every effort to ensure that the information provided on this data sheet is correct. However, we cannot guarantee this, and accept no liability for any information or advice given on this data sheet.

Ring only toilet seat



Product details

Warranty:	2 years
Maximum load:	n/a
Doc M compliant:	Yes
Suitable for wet areas:	Yes

Features

- Complies with Part M of the Building Regulations
- Anti-bacterial, strong and durable seat
- Ergonomic and comfortable shape
- Dedicated moulded buffers for best stability
- Strong stainless steel hinge
- Fits pan NY01-PANCC02-WH (Only compatible with this pan)

Finish options



Dark blue
RAL 5011



Dark grey
RAL 7016



Grey
RAL 7005



White
RAL 9016

Product description

- Toilet seat, ring only, stainless steel hinge, dark blue (RAL 5011)
- Toilet seat, ring only, stainless steel hinge, dark grey (RAL 7016)
- Toilet seat, ring only, stainless steel hinge, grey (RAL 7005)
- Toilet seat, ring only, stainless steel hinge, white (RAL 9016)

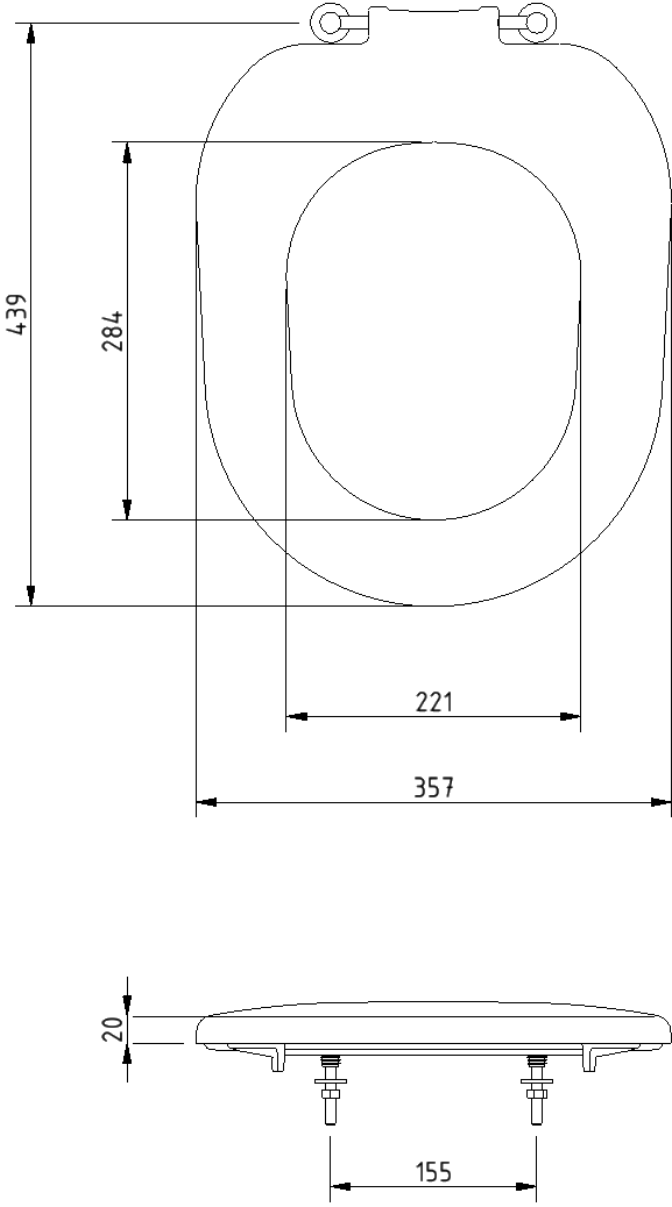
Product code

- NY01-SEAT03-DB
- NY01-SEAT03-DG
- NY01-SEAT03-GY
- NY01-SEAT03-WH

Disclaimer

NYMAS Group makes every effort to ensure that the information provided on this data sheet is correct. However, we cannot guarantee this, and accept no liability for any information or advice given on this data sheet.

Dimensions (mm)



Round flange steel grab rail with concealed fixings, 35mm diameter tube



Product details

Warranty:	2 years
Max rated load:	200 kg
Doc M compliant:	Yes
Suitable for wet areas:	No

Features

- Complies with Part M of the Building Regulations
- Robust steel construction
- Durable epoxy polyester coated finish
- Concealed fixing grab rails

Finish options

WH

White
RAL 9016

DB

Dark blue
RAL 5011

DG

Dark grey
RAL 7016

GY

Grey
RAL 7005

Product description

Round flange grab rail, steel, concealed fixings, 35mm diameter, 300mm
Round flange grab rail, steel, concealed fixings, 35mm diameter, 450mm
Round flange grab rail, steel, concealed fixings, 35mm diameter, 600mm
Round flange grab rail, steel, concealed fixings, 35mm diameter, 900mm

Product code

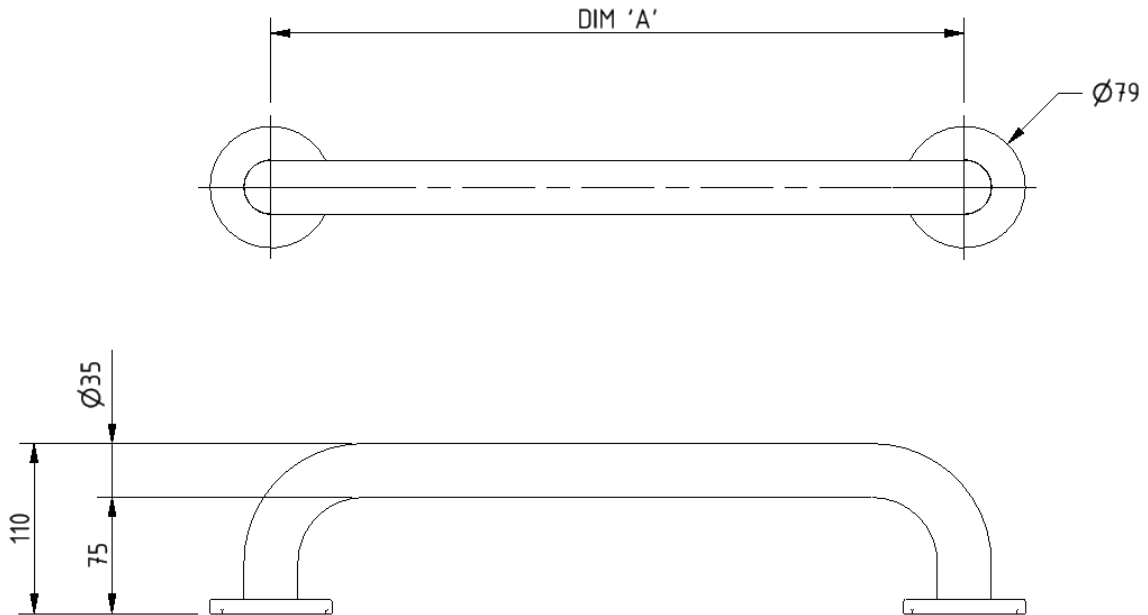
G1235C/**
G1835C/**
G2435C/**
G3635C/**

Replace ** with finish option code above e.g., G2435C/DB

Disclaimer

NYMAS Group makes every effort to ensure that the information provided on this data sheet is correct. However, we cannot guarantee this, and accept no liability for any information or advice given on this data sheet.

Dimensions (mm)



PRODUCT CODE	G1235C/**	G1835C/**	G2435C/**	G3635C/**
DIM 'A'	300	450	600	900