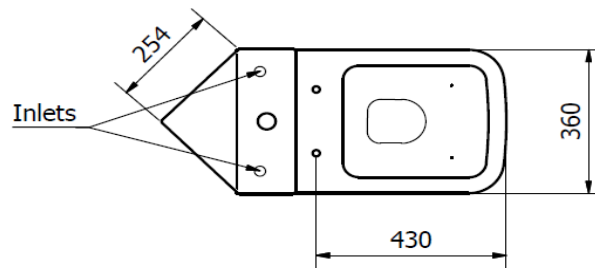
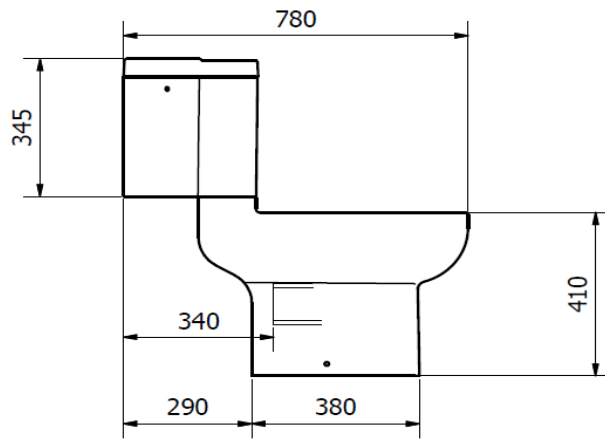
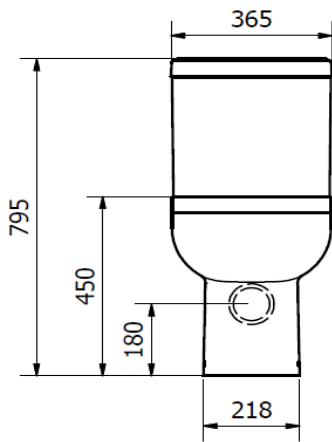


**OPTIONS 600 C/C PAN, SEAT & CORNER CISTERN**

**ILLUSTRATION: OPTIONS C/C PAN & CISTERN**
**CODE: C/C WC PAN - POT0800P  
 C/C CISTERN - POT456SE  
 SOFT CLOSE SEAT - POT0820P  
 PREMIUM S/C SEAT - POT0840P**
**COLOUR: WHITE**

| WEIGHT:    | WC PAN  | CISTERN | SEAT   | P SEAT |
|------------|---|---------|--------|--------|
| NET:       | 27.5 KG   | 13.5 KG | 1.4 KG | 2.3 KG |
| GROSS:     | 28.5 KG   | 14.5 KG | 1.6 KG | 2.5 KG |
| STANDARDS: | BS EN 997 WCs<br>BS EN 14055 FLUSHING CISTERNS<br>BS 3402 |         |        |        |

**NOTES:  
 VITREOUS CHINA  
 WATER SAVING 6/4 LITRE FLUSH  
 SOFT CLOSE SEAT WITH QUICK RELEASE TOP FIX HINGE**

**BOX SIZES :- WC PAN = 390 X 490 X 640 mm / CISTERN = 380 X 380 X 320 mm / SEAT = 450 X 370 X 55 mm**