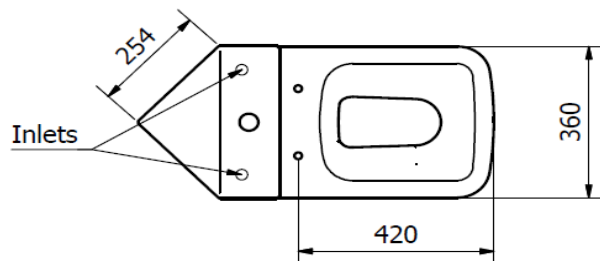
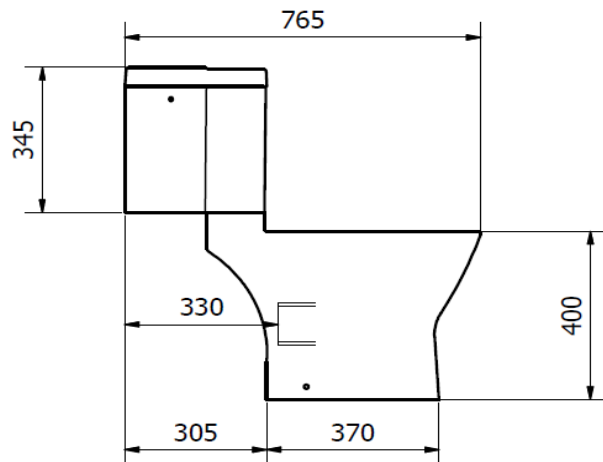
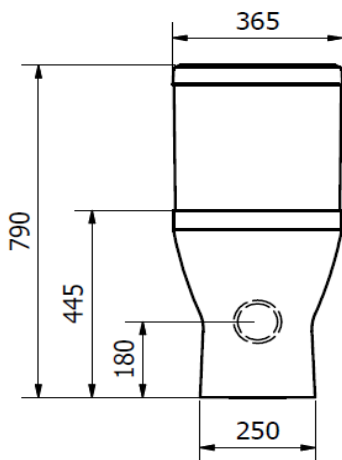


**PROJECT SQUARE C/C PAN, SEAT & CORNER CISTERN CISTERN**
**ILLUSTRATION: PROJECT SQUARE C/C PAN & CISTERN**
**CODE: C/C WC PAN - POT860PR  
 C/C CISTERN - POT456SE  
 SOFT CLOSE SEAT - POT866PR**

**COLOUR: WHITE**

WEIGHT:	WC PAN	CISTERN	SEAT
NET:	26.5 KG	13.5 KG	1.6 KG
GROSS:	28.0 KG	14.5 KG	1.9 KG

**STANDARDS: BS EN 997 WCs (Class 2)  
 BS EN 14055:2010 FLUSHING CISTERNS  
 BS 3402**
**NOTES:  
 VITREOUS CHINA  
 WATER SAVING 6/4 LITRE FLUSH  
 SOFT CLOSE SEAT WITH QUICK RELEASE TOP FIX HINGE**

**BOX SIZES :- WC PAN = 370 X 490 X 630 mm / CISTERN = 380 X 380 X 320 mm / SEAT = 450 X 370 X 55 mm**