

Specification

Tolerance Guidelines (Carcase Assembly)

Doors:
Doors including edge band (if required) + or - 0.5mm

Carcase:
Rails and Shelves + or - 0.5mm

Squareness:
Panels to be checked back to back + or - 1.0mm per linear metre
Panels corner to corner (diagonal) + or - 1.0mm per linear metre

Drilling:
Visible holes must be clean of chipping on circumference
Location + or - 0.5mm
Diameter + or - 0.1mm
Depth + or - 0.5mm
Countersunk hole depth no greater than 1.5mm depth
Spikes must be clearly visible

Groove / Slot / Rebate:
Depth + or - 0.5mm
Width + 0.5mm or - 0.0mm
Distance from Datum Edge + or - 0.5mm

Chipping:
A Face is visible at all times – no chipping allowed
B Face is intermittently visible – no chipping allowed
C Face is not visible – intermittent allowed

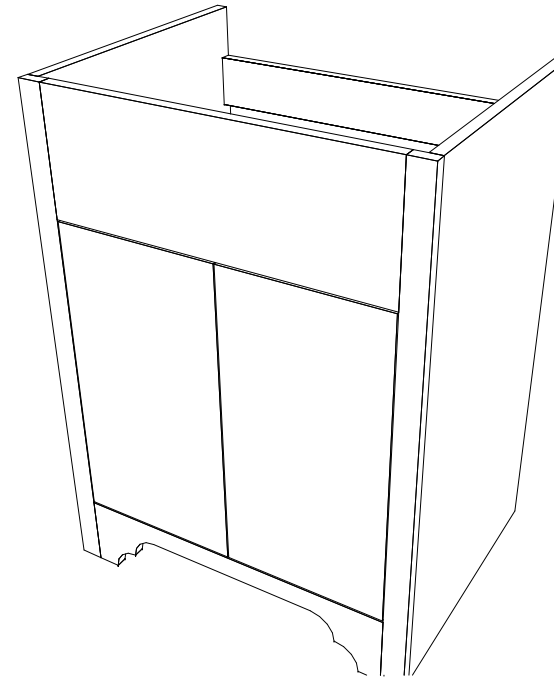
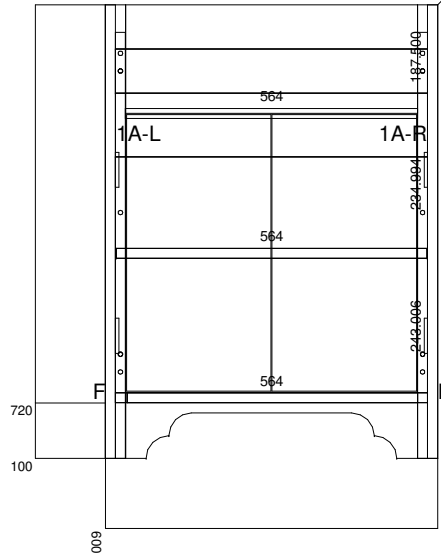
Refer to quality documentation and any relevant customer specification for more concise tolerance guidelines

IF IN DOUBT ASK!

Cabinet Number	Quantity
1	1
Customer Summerbridge	
Sales Order SO	
Reference Buckingham Traditional Range	
Product BUS600VU-B	
Size H820 x W600 x D447	
Print Date 27/07/23 @9:20 AM	

summerbridge
Kitchens | Bedrooms | Bathrooms | Doors | Cabinets

447



Doors				
2	500	261	Slab	18mm Generic MDF
Panel Stock				
1	820	446.990	Vinyl Left End	18mm Generic MDF
1	820	446.990	Vinyl Right End	18mm Generic MDF
1	426.500	564	Unfinished Back	18mm Lissa Oak
1	564	80	Nailer	18mm Lissa Oak
1	564	396.490	Shaped Deck	18mm Lissa Oak
1	820	37	Vinyl Left Stile	18mm Generic MDF
1	820	37	Vinyl Right Stile	18mm Generic MDF
1	527	196	Vinyl Top Rail	18mm Generic MDF
1	527	119	Vinyl Bottom Rail	18mm Generic MDF
1	770	62	Vinyl Left Packer	18mm Generic MDF
1	770	62	Vinyl Right Packer	18mm Generic MDF
1	562	310.490	Adjustable Shelf	18mm Lissa Oak
1	528	61	Vinyl Drawer Stretcher	18mm Generic MDF

Hardware				
4	63.500	25.400	Hinge	110D Slyder S/C Hinge

Fittings	
12	SCREW
4	Shelf Support
2	L BRACKET

Comment
Created 18Jan2023 - GS
29/03/2023 - Added Dowels to Nailer - RA
10/07/2023 - Changed holes on packers to through holes
13/07/2023 - Corrected position of cams on back