

**SHO000PL- Plan Triple Concealed Thermostatic Shower Valve Round Handle (2 way)**

BAR CODE: 5055681434731

COLOUR: CHROME

WEIGHT:

NET 3.02 kg

GROSS 3.44 kg

STANDARDS: BS EN 1111

NOTES:

SUITABLE FOR PRESSURES BETWEEN 0.2 - 5 BAR

HOT & COLD PRESSURES MUST BE BALANCED

SUITABLE FOR COMBI- BOILERS, UNVENTED MAINS

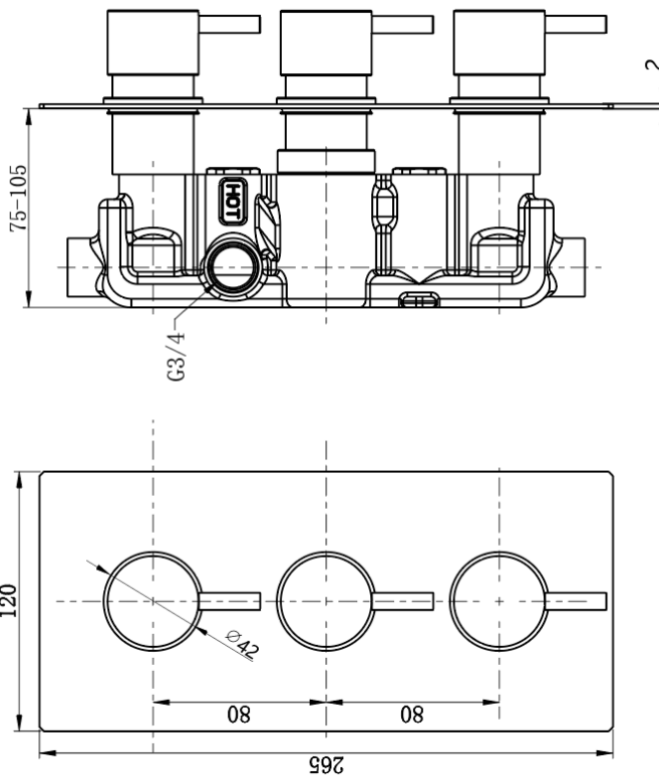
PRESSURE SYSTEMS AND GRAVITY FED SYSTEMS

SUITABLE FOR SHOWER PUMPS

Flow Rate:



0.2 bar	0.5 bar	1 bar	2 bar	3 bar	5 bar
6.0 L	8.2 L	12.1 L	17.4 L	21.5 L	26.2L



BOX SIZE 365x165x160