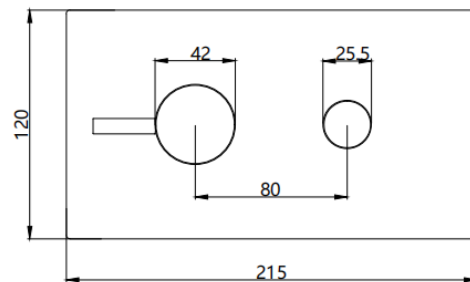
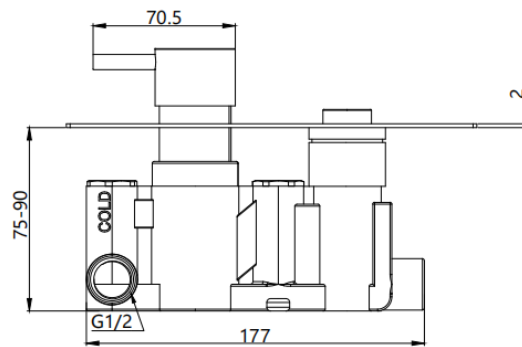


SHO006PL- Plan Single Round Push Button Concealed Thermostatic Shower Valve
BAR CODE: 5055681430283
COLOUR: CHROME
WEIGHT:
NET 2.3kg
GROSS 2.5 kg
STANDARDS: BS EN 1111
NOTES:
SUITABLE FOR PRESSURES BETWEEN 0.2 - 5 BAR
HOT & COLD PRESSURES MUST BE BALANCED
SUITABLE FOR COMBI- BOILERS, UNVENTED MAINS
PRESSURE SYSTEMS AND GRAVITY FED SYSTEMS
SUITABLE FOR SHOWER PUMPS
Flow Rate:


0.2 bar	0.5 bar	1 bar	2 bar	3 bar	5 bar
4 L	5.5 L	10.5 L	16.5 L	20.3 L	24.5 L


BOX SIZE 263X165X160