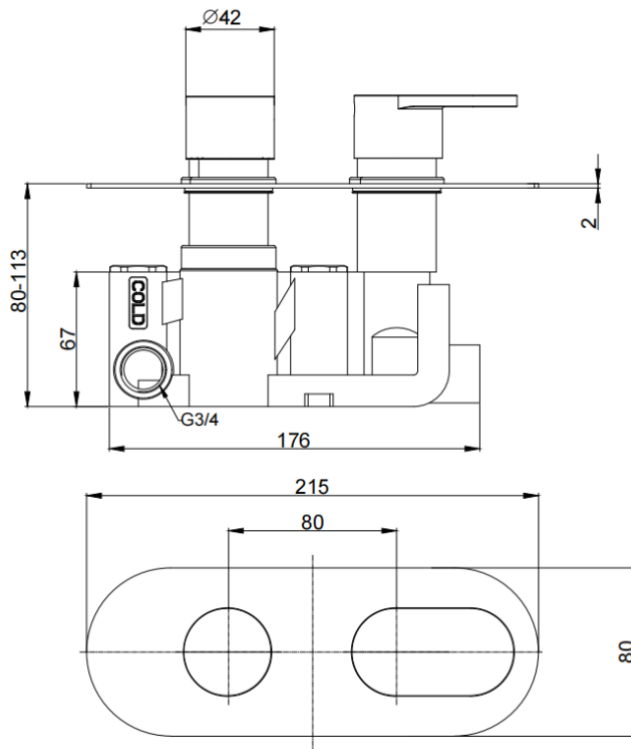


SHO020LO- Logik concealed thermostatic shower valve

BAR CODE: 5055681401504
COLOUR: CHROME
WEIGHT:
NET 2.12 kg
GROSS 2.48 kg
STANDARDS: BS EN 1111
NOTES:
SUITABLE FOR PRESSURES BETWEEN 0.2 - 5 BAR
HOT & COLD PRESSURES MUST BE BALANCED
SUITABLE FOR COMBI- BOILERS, UNVENTED MAINS
PRESSURE SYSTEMS AND GRAVITY FED SYSTEMS
SUITABLE FOR SHOWER PUMPS
Flow Rate:

0.2 bar	0.5 bar	1 bar	2 bar	3 bar	5 bar
5.7 L	9.6 L	13.6 L	19.8 L	24.5 L	28.5 L


BOX SIZE 263x165x160