

**OPTIONS 600 CLOSE TO WALL PAN, SEAT & CORNER CISTERN**

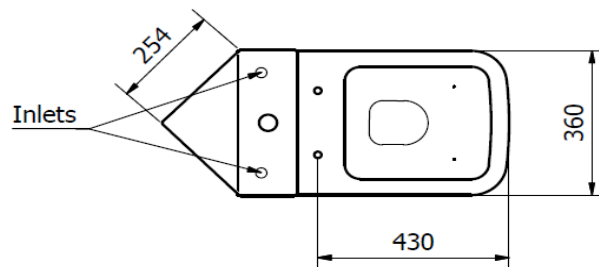
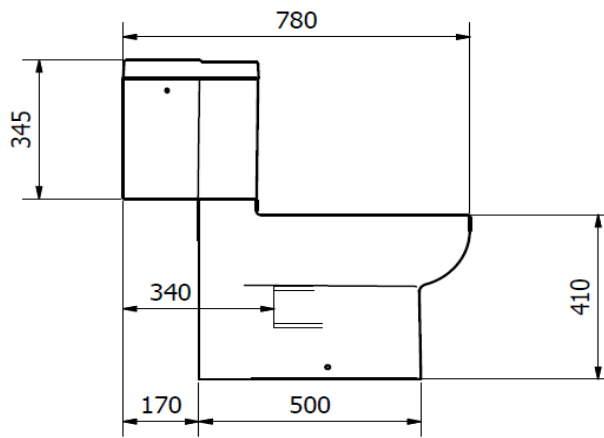
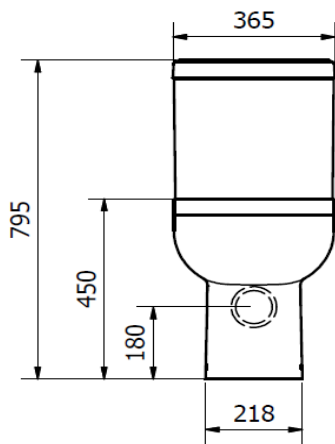
**ILLUSTRATION: OPTIONS CLOSE TO WALL PAN & CISTERN**

**CODE: C/C WC PAN - POT0700P**  
**C/C CISTERN - POT456SE**  
**SOFT CLOSE SEAT - POT0820P**  
**PREMIUM S/C SEAT - POT0840P**

**COLOUR: WHITE**

WEIGHT:	WC PAN	CISTERN	SEAT	P SEAT
NET:	27.5 KG	13.5 KG	1.4 KG	2.3 KG
GROSS:	28.5 KG	14.5 KG	1.6 KG	2.5 KG
STANDARDS:	BS EN 997 WCs (class 2)			
	BS EN 14055:2010 FLUSHING CISTERNS			
	BS 3402			

**NOTES:**  
**VITREOUS CHINA**  
**WATER SAVING 6/4 LITRE FLUSH**  
**SOFT CLOSE SEAT WITH QUICK RELEASE TOP FIX HINGE**



BOX SIZES :- WC PAN = 390 X 490 X 640 mm / CISTERN = 380 X 380 X 320 mm / SEAT = 450 X 370 X 55 mm