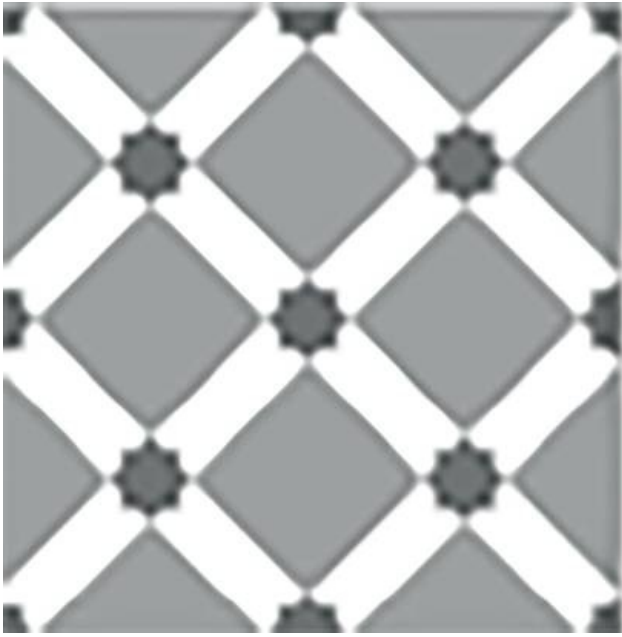


SYMPHONY
SYMPHONY ORNAMENTAL I

RAK
CERAMICS



Product code:	EBDJ102
Size:	20x20cm
Series:	SYMPHONY
Color:	MIX
Typology:	PORCELAIN TILES
Structure:	SMOOTH
Surface look:	MATT
Edge:	RECTIFIED
Thickness:	9 mm
Unity measure:	M ²

Dimensions: All dimensions in mm tolerance +5% for below 200mm and +3% for above 200mm.
Thickness tolerance of $\pm 5\%$ whichever is less.

Note: Due to a continuing development programme to improve design and performance, the manufacturer reserves all rights to vary specifications without prior information.

TECHNICAL CHARACTERISTICS - PORCELAIN TILES (B1a - GL)

	Test Description	Standard Test Method	International Standard ISO 13006	RAK Ceramics Specifications	
				(Rectified)	(Unrectified)
	Length & Width	BS EN ISO 10545-2	+/- 0.6%	+/- 0.1%	+/- 0.3%
	Thickness	BS EN ISO 10545-2	+/-5.0%	+/- 5.0%	+/- 5.0%
	Rectangle Squareness	BS EN ISO 10545-2	+/- 0.5%	+/- 0.2%	+/- 0.4%
	Straightness of sides	BS EN ISO 10545-2	+/- 0.5%	+/- 0.2%	+/- 0.3%
	Surface Flatness	BS EN ISO 10545-2	+/- 0.5%	+/- 0.3%	+/- 0.3%
	Water Absorption	BS EN ISO 10545-3	<=0.5%	<=0.4%	<=0.4%
	Modulus of Rupture	BS EN ISO 10545-4	>=35 N/mm ²	>=40 N/mm ²	>=40 N/mm ²
	Breaking Strength	BS EN ISO 10545-4	>=1300N	>=1600N	>=1600N
	Resistance to surface abrasion	BS EN ISO 10545-7	Manufacturer to state Abrasion Class	PEI Class 2 -5	PEI Class 2 -5
	Linear Thermal Expansion	BS EN ISO 10545-8	<=9x10 ⁻⁶ °C ⁻¹	<=7x10 ⁻⁶ °C ⁻¹	<=7x10 ⁻⁶ °C ⁻¹
	Resistance to Thermal Shock	BS EN ISO 10545-9	No visible defect	No visible defect	No visible defect
	Crazing Resistance	BS EN ISO 10545-11	No crazing	No crazing	No crazing
	Frost Resistance	BS EN ISO 10545-12	No visible damage	No visible damage	No visible damage
	Resistance to chemicals	BS EN ISO 10545-13	No visible defect	No visible defect	No visible defect
	Resistance to stains	BS EN ISO 10545-14	Manufacturer to state class	Stain removed Min.class 4	Stain removed Min.class 4
	Colour Resistance to UV Light	DIN 51094	No change in colour	No change in colour	No change in colour

Note : Shade variation across the batches is inherent to the manufacturing process and the pre-laying colour comparison is recommended