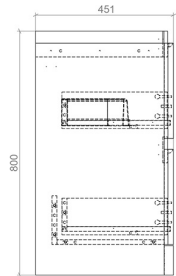
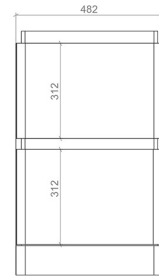
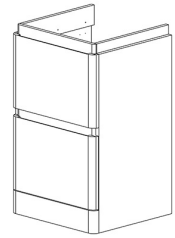


RAK-RESORT - RAKRSTFSU50602

Cloakroom Vanity Unit, None

RAK
CERAMICS



TECHNICAL SPECIFICATIONS

Suite:	RAK-RESORT
Type:	Cloakroom Vanity Unit
Dimensions:	482 x 800 mm
Weight:	27 Kg
Color:	Matt Mushroom
Door drawer:	2

Code	Name
RAKRSTFSU50602	RAK-RESORT - 50cm Floorstanding basin unit in Matt Mushroom to fit Resort 50cm Basin

Dimensions: All dimensions in mm. Tolerance of vitreous china & fireclay items: $\pm 5\%$ for below 200mm and $\pm 3\%$ for above 200mm; for all other items tolerance $\pm 1\%$. Note: Due to a continuing development program to improve design and performance, the manufacturer reserves all rights to vary specifications without prior information. Please note accessories are for photographic use only.