

RANGEMASTER™

SINKS & TAPS



KITCHEN SINK & TAP COLLECTION

CONTENTS

STAINLESS STEEL SINKS

NEW Cosmo	12
NEW Arlington	13
NEW Boston	14
Rockford	15
NEW Iconica	16
NEW Oakland	17
Manhattan	18
Houston	19
Michigan	20
Glendale	21
Baltimore	22
Cosmo	23
Spectra	25
NEW Kube	26-27
NEW Cubix	28-29
NEW Quad	30-31
Classic	32-33

GRANITE SINKS

NEW Prato	36
NEW Topaz	37
Mayon	38
Amethyst	39
Elements	40
Andesite	41
NEW Loa	42
NEW Oridian Inset	43
NEW Oridian Undermount	44
Paragon	45

FIRE-CLAY SINKS

NEW Arlington	48
Austell	49
Rustic	50
Tenby	51
Hartland	52
NEW Rustique	53-55
NEW Farmhouse	56-57
Classic Belfast	57
Grange	58
NEW Sandwood	59
Belfast	59

KITCHEN TAPS

Hot Water Taps	62
Filter Taps	62
Pull-Out Taps	63
Single Lever Taps	64-65
Dual Lever Taps	66-69

ACCESSORIES

Waste Disposal Units	70
Sink Accessories	70



KEY FEATURES

- NEW** **NEW PRODUCTS**
We have lots of new products to introduce, look out for the new icon across our pages.
- 0.9** **GAUGE MATERIAL**
Sinks vary from 0.6 to 1.0mm gauge, the higher the gauge of material the thicker the material is.
- 600** **MINIMUM CABINET SIZE**
Sink options available to suit 450mm, 500mm, 600mm, 800mm and 1000mm cabinets.
- R** **REVERSIBLE INSTALLATION**
The sink can be fitted with a left-hand or right-hand drainer option.
- 25** **25 YEAR WARRANTY**
Rangemaster stainless steel and granite sinks include a 25-year warranty.
- 10** **10 YEAR WARRANTY**
Rangemaster fire-clay ceramic sinks include a 10-year warranty.
- 5** **5 YEAR WARRANTY**
Rangemaster taps include a 5-year warranty.
- ANTI-SPLASH SPOUT**
The spout features a honeycomb aerator design which mixes air with water to emit a soft, 'champagne like' water flow with no splash.
- PULL-OUT HOSE**
For ultimate food preparation and cleaning results choose a tap with a pull-out hose.
- A** **ALL PRESSURE**
Look for the 'A' symbol opposite across our range which highlights compatibility with all water systems from 0.2 bar onwards.
- M** **MEDIUM PRESSURE**
Taps with an 'M' symbol require a plumbing system operating at 0.5 bar and above.
- H** **HIGH PRESSURE**
Taps with a 'H' symbol require a plumbing system with 1.0 bar or higher when installing.

Rangemaster Quality



Our sink and tap collection is renowned for its durable build and high quality. With over 90 years' experience manufacturing stainless steel sinks we are the No.1 sink manufacturer in the UK, with the majority of our sinks being manufactured at our factory in Long Eaton, Nottingham.

The kitchen sink area is the most used space in the kitchen so it's vital that your chosen sink and tap is built to last in the busiest of environments.

Using the best sourced raw materials available and advanced manufacturing techniques, we design and engineer our products so that they combine functionality, durability and stylish design.

Whether you're retro-fitting or re-styling your kitchen our wide range of sinks and taps cater for all budgets and styles; from the ultra contemporary to the farmhouse-style traditional kitchen schemes.

We are confident our sinks and taps are built to last so that's why we offer a 25 year warranty on our stainless steel & granite sinks collections, 10 years warranty with our fire-clay ceramic sinks and 5 years warranty with our tap collection.



OUR COMMITMENT TO THE ENVIRONMENT

It is testament to our reliability and commitment to the environment that Rangemaster is the proud recipient of double ISO accreditation.

BS EN ISO 9001 certifies that Rangemaster products are designed and manufactured to an internationally recognised quality management system, while BS EN 14001 acknowledges our commitment to continually improving environmental performance by adopting an approved environmental management system.



New Products

NEW IN 2024



We have added many new products to our brochure.

Look out for the **NEW** logo across our pages.



LARGE FARMHOUSE

Designed to harmoniously integrate modern living with a traditional country aesthetic, the new Farmhouse Belfast kitchen sink presents a sophisticated alternative to classic designs. The newly introduced Farmhouse features a spacious 795mm bowl, offering enhanced practicality and functionality for any kitchen all while maintaining a strikingly elegant appearance.

Visit pg. **56** to find out more.

New Products

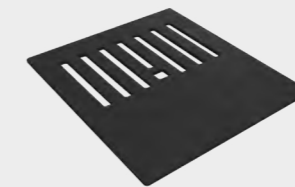
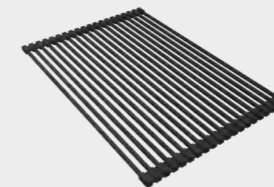
NEW IN 2024

PRATO WORKSTATION

Divided into three different working levels to maximise the space available within the bowl, the Prato sink provides a functional compact workstation, to aid in the food preparation of the everyday culinary chef. Sliding accessories (cutting board, colander and flex drainer) can be positioned on three levels dependent on your food preparation needs.

Our workstation is designed to conceal modern kitchen mess with style and takes the trend for granite sinks a step further by adding hidden functionality.

Visit pg. **36** to find out more.



All accessories included with Prato sink

KUBE

The Kube undermount kitchen sink collection creates a geometric effect thanks to its dramatic 10mm radii corner profiling.

The newly designed Kube range is equipped with dual fix fittings so that it can be used as either an inset or undermount sink, and enhanced with an upgraded waste kit and cover.

Visit pg. **26-27** to find out more.



New Products

NEW IN 2024



We have added many new products to our brochure.

Look out for the **NEW** logo across our pages.



CERAMIC ARLINGTON

Modelled from our flagship stainless steel range, Arlington, this new ceramic collection encompasses its iconic design styling and is offered to the market as a reversible solution providing flexibility for the customer when installing.

Visit pg. **48** to find out more.



HEMLOCK

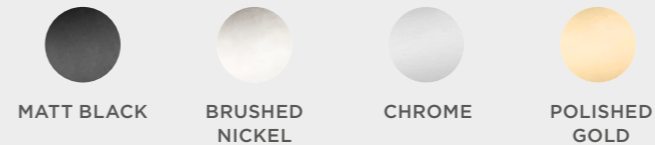
Exquisitely finished, the Hemlock tap range features a delicate knurled handle paired with a sweeping neck spout design.

Two designs to choose from: single lever or dual lever; both available in four finishes.

Single lever compatible with medium pressure systems, dual lever compatible with all pressure systems.

Visit pg. **64 and 66** to find out more.

AVAILABLE IN FOUR FINISHES:



COSMO

A seamless finished design with a unique brushed patterned drainer, the Cosmo sink stands out from the crowd.

Its generous deep bowls feature a dramatic 10mm radii corner, complemented with the addition of a new upgraded waste kit and cover to provide a sleek contemporary finished look when fitted.

Visit pg. **12** to find out more.



WAVERLEY

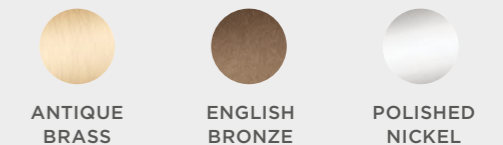
The Waverley collection exudes Farmhouse luxe, with its unique handle design featuring intricate contouring detail and its classic spout design - the Waverley kitchen is the perfect accompaniment to a fire-clay kitchen sink.

Two designs to choose from: Dual Lever and Bridge options; both available in three finishes. Both designs are compatible with all pressure systems.

Visit pg. **66** to find out more.



AVAILABLE IN THREE FINISHES:



Choosing Your Sink

MATERIAL TYPE



STAINLESS STEEL

Remaining the most popular choice when choosing a kitchen sink, stainless steel is a robust, hygienic and hard-working solution. Rangemaster offer one of the largest and comprehensive ranges of stainless steel sinks providing a solution for every installation.

18/10 Stainless Steel – our steel maintains a long-lasting sheen thanks to the additional content of nickel added to its raw material.

Pre-fitted Seals – Rangemaster sinks are supplied with pre-fitted seals reducing installation time and ensuring a water tight seal is achieved with the work surface every time.

Waste Kit Included

25 Year Warranty



GRANITE

For a modern and contemporary look, choose a granite sink, which are available in multiple different design options in an array of different colours.

Durable Material – resistant against knocks, scratches, heat and stains - ideal for busy family lives.

Hygienic Surface – a non-porous material which naturally repels microbes and stains making the sink much easier to clean.

UV Stability – our patent mix of raw materials protects the colouring from fading offering a fade free finish for years to come.

Waste Kit Included

25 Year Warranty



FIRE-CLAY CERAMIC

A fire-clay ceramic sink will create the ultimate statement piece; with a wide variety of installation options available there is a design style suitable for any style of kitchen.

Easy Clean Surface – featuring a smooth glazed surface, fire-clay ceramic sinks are easy to clean as microbes and stains just simply wipe away.

Superior Strength – thanks to the high gloss glazed finish, Rangemaster ceramic sinks are highly resistant against heat, stains and scratches.

Waste Kit Included

10 Year Warranty

INSTALLATION TYPE



INSET

An inset kitchen sink is compatible with any choice of worktop material, making it the most popular design choice. Rangemaster's inset sinks are pre-fitted with seals to create the ultimate barrier against water ingress and prevent potential future damage if water were to seep through, making these sinks a great accompaniment to laminate worktops.

The added benefit of its integrated drainer offers additional food preparation space and allows washed pots to be dried effortlessly.

Inset options are available in:

- Stainless Steel
- Granite
- Fire-Clay Ceramic



UNDERMOUNT

Choose an undermount sink for a sleek, modern and minimalist look. These sinks are installed on the underside of the work surface which extends the worktop area and offers a seamless finished look; increasing the worktop space available makes these sinks an ideal solution for compact kitchen spaces.

Often paired with granite, solid surface and wooden worktops, an undermount sink is a modern solution for a minimalist kitchen scheme.

Undermount options are available in:

- Stainless Steel
- Granite
- Fire-Clay Ceramic



SIT-ON BELFAST

Create the ultimate statement piece in your kitchen with the addition of a sit-on Belfast sink, traditionally styled; these sinks complement shaker style kitchen cabinetry beautifully.

Featuring generous deep bowls, a sit-on Belfast sink is ideal for washing large pots and pans which can't fit into a dishwasher easily.

Sit-on options are available in:

- Fire-Clay Ceramic



STAINLESS STEEL KITCHEN SINKS

The Durable, Resilient & Stylish Choice

Stainless steel remains the most popular material choice when choosing a kitchen sink due to its hard wearing and long-lasting properties. Rangemaster stainless steel sinks are all manufactured using high-grade 18/10 stainless steel, whereby the additional nickel property included in this material grade offers a long lasting high-sheen finish.

The majority of our stainless-steel sinks are manufactured in the heart of the midlands in the UK, where each Rangemaster sink is hand finished by our experienced craftsmen and supplied with a 25-year warranty offering you peace of mind when purchasing.

There are an array of different designs available suiting inset and undermount installations.

KEY FEATURES



FITTED SEALS

All stainless steel inset sinks are pre-fitted with seals reducing installation time whilst ensuring a perfect, water-tight fit is retained with the work surface.



SUBTLE GROUND EDGE TRIM

All stainless steel inset sinks are finished with a ground edge trim to beautifully frame the sink.



MICRO-SHEEN™ FINISH

All Rangemaster stainless steel sinks feature a Micro-Sheen™ finished surface; which offers a soft brushed appearance with a polished finish. This advanced application provides a lustrous finished look whilst also enhancing the sinks resistance against heat, scratches and stains.



ARLINGTON

Embracing the trend for all things geometric, featuring a stylish smooth drainer, for a bold but streamlined addition to a contemporary kitchen scheme.

25
YEAR
WARRANTY

985 x 508mm Single Bowl Inset Sink



Main Bowl Size	450 x 420 x 190mm (L x W x D)
Material	18/10 Stainless Steel - 0.9mm gauge
Finish	Micro-sheen Brushed Polished Finish
Min. Base Unit	600mm
Drainer Position	Handed

0.9

600

Sink	AR9851L/ (left hand) AR9851R/ (right hand)
Waste kit	Waste kit included
Accessories	Square Waste Adapter WDUSQAD/ Stainless Steel Draining Basket KA20SS/

985 x 508mm 1.5 Bowl Inset Sink



Main Bowl Size	340 x 420 x 190mm (L x W x D)
Second Bowl Size	160 x 350 x 130mm (L x W x D)
Material	18/10 Stainless Steel - 0.9mm gauge
Finish	Micro-sheen Brushed Polished Finish
Min. Base Unit	600mm
Drainer Position	Handed

0.9

600

Sink	AR9852L/ (left hand) AR9852R/ (right hand)
Waste kit	Waste kit included
Accessories	Square Waste Adapter WDUSQAD/ Stainless Steel Strainer KA09/ Stainless Steel Draining Basket KA20SS/

COSMO

A seamless finished design with a unique brushed patterned drainer, the Cosmo sink stands out from the crowd.

25
YEAR
WARRANTY

NEW



Left-hand drainer shown

960 x 500mm Single Bowl Inset Sink

Main Bowl Size	460 x 400 x 210mm (L x W x D)
Material	18/10 Stainless Steel - 1.0mm gauge
Finish	Micro-sheen Brushed Polished Finish
Min. Base Unit	600mm
Drainer Position	Handed

1.0

600

Sink	CSM9601L/ (left hand) CSM9601R/ (right hand)
Waste kit	Waste kit and cover included

NEW



Left-hand drainer shown

960 x 500mm 1.5 Bowl Inset Sink

Main Bowl Size	350 x 400 x 200mm (L x W x D)
Second Bowl Size	180 x 400 x 140mm (L x W x D)
Material	18/10 Stainless Steel - 1.0mm gauge
Finish	Micro-sheen Brushed Polished Finish
Min. Base Unit	600mm
Drainer Position	Handed

1.0

600

Sink	CSM9602L/ (left hand) CSM9602R/ (right hand)
Waste kit	Waste kit and cover included

NEW



1000 x 500mm Single Bowl Inset Sink

Main Bowl Size	450 x 400 x 215mm (L x W x D)
Material	18/10 Stainless Steel - 0.9mm gauge
Finish	Micro-sheen Brushed Polished Finish
Min. Base Unit	600mm
Drainer Position	Reversible

0.9

600

R

Sink	ARL1051/
Waste kit	Waste kit and cover included

NEW



1000 x 500mm 1.5 Bowl Inset Sink

Main Bowl Size	340 x 400 x 210mm (L x W x D)
Second Bowl Size	170 x 300 x 150mm (L x W x D)
Material	18/10 Stainless Steel - 0.9mm gauge
Finish	Micro-sheen Brushed Polished Finish
Min. Base Unit	600mm
Drainer Position	Reversible

0.9

600

R

Sink	ARL1052/
Waste kit	Waste kit and cover included



BOSTON

Sleek and compact – the new Boston collection features large deep bowls paired with a small compact drainer and back tap ledge.

25
YEAR
WARRANTY

860 x 520mm Single Bowl Inset Sink

Main Bowl Size	500 x 400 x 210mm (L x W x D)
Material	18/10 Stainless Steel – 1.0mm gauge
Finish	Micro-sheen Brushed Polished Finish
Min. Base Unit	600mm
Drainer Position	Handed

1.0

600

Sink **BST8601L/** (left hand)
BST8601R/ (right hand)

Waste kit Waste kit and cover included

860 x 520mm 1.5 Bowl Inset Sink

Main Bowl Size	340 x 400 x 205mm (L x W x D)
Second Bowl Size	180 x 400 x 205mm (L x W x D)
Material	18/10 Stainless Steel – 1.0mm gauge
Finish	Micro-sheen Brushed Polished Finish
Min. Base Unit	600mm
Drainer Position	Handed

1.0

600

Sink **BST8602L/** (left hand)
BST8602R/ (right hand)

Waste kit Waste kit and cover included

NEW



NEW



ROCKFORD

Incorporating classic linear styling and featuring distinctive bold lines, the Rockford is a versatile kitchen sink suitable for traditional and contemporary styled kitchen schemes.

25
YEAR
WARRANTY

985 x 508mm Single Bowl Inset Sink

Main Bowl Size	340 x 420 x 190mm (L x W x D)
Material	18/10 Stainless Steel – 0.9mm gauge
Finish	Micro-sheen Brushed Polished Finish
Min. Base Unit	600mm
Drainer Position	Handed

0.9

600

Sink **RK9851L/** (left hand)
RK9851R/ (right hand)

Waste kit Waste kit included

Accessories Stainless Steel Draining Basket **KA20SS/**

985 x 508mm 1.5 Bowl Inset Sink

Main Bowl Size	340 x 420 x 190mm (L x W x D)
Second Bowl Size	160 x 350 x 130mm (L x W x D)
Material	18/10 Stainless Steel – 0.9mm gauge
Finish	Micro-sheen Brushed Polished Finish
Min. Base Unit	600mm
Drainer Position	Handed

0.9

600

Sink **RK9852L/** (left hand)
RK9852R/ (right hand)

Waste kit Waste kit included

Accessories Stainless Steel Strainer **KA09/**
Stainless Steel Draining Basket **KA20SS/**





OAKLAND

Oakland is a popular choice when designing a new kitchen thanks to its large bowls and practical drainer design, which is now bolstered with a new reversible collection offering more flexibility when installing

25
YEAR
WARRANTY

985 x 508mm Single Bowl Inset Sink



Main Bowl Size	450 x 420 x 190mm (L x W x D)
Material	18/10 Stainless Steel - 0.9mm gauge
Finish	Micro-sheen Brushed Polished Finish
Min. Base Unit	600mm
Drainer Position	Handed

0.9

600

Sink **OL9851L/** (left hand)
OL9851R/ (right hand)

Waste kit Waste kit included

985 x 508mm 1.5 Bowl Inset Sink



Main Bowl Size	360 x 424 x 170mm (L x W x D)
Second Bowl Size	156 x 342 x 120mm (L x W x D)
Material	18/10 Stainless Steel - 0.9mm gauge
Finish	Micro-sheen Brushed Polished Finish
Min. Base Unit	600mm
Drainer Position	Handed

0.9

600

Sink **OL9852L/** (left hand)
OL9852R/ (right hand)

Waste kit Waste kit included

Accessories Stainless Steel Strainer Bowl **KA28SS/**

ICONICA

Modern looks paired with practical functionality, Iconica features a flat drainer design complemented with large bowls, ideal for washing larger pots and pans.

25
YEAR
WARRANTY

950 x 508mm Single Bowl Inset Sink



Main Bowl Size	400 x 400 x 205mm (L x W x D)
Material	18/10 Stainless Steel - 0.9mm gauge
Finish	Micro-sheen Brushed Polished Finish
Min. Base Unit	600mm
Drainer Position	Reversible

0.9

600

R

Sink **ICN9501/**

Waste kit Waste kit and cover included

950 x 508mm 1.5 Bowl Inset Sink



Main Bowl Size	340 x 400 x 200mm (L x W x D)
Second Bowl Size	170 x 300 x 130mm (L x W x D)
Material	18/10 Stainless Steel - 0.9mm gauge
Finish	Micro-sheen Brushed Polished Finish
Min. Base Unit	600mm
Drainer Position	Reversible

0.9

600

R

Sink **ICN9502/**

Waste kit Waste kit and cover included



1000 x 500mm Single Bowl Inset Sink

Main Bowl Size	450 x 400 x 210mm (L x W x D)
Material	18/10 Stainless Steel - 0.9mm gauge
Finish	Micro-sheen Brushed Polished Finish
Min. Base Unit	600mm
Drainer Position	Reversible

0.9

600

R

Sink **OAK1051/**

Waste kit Waste kit and cover included



1000 x 500mm 1.5 Bowl Inset Sink

Main Bowl Size	340 x 400 x 205mm (L x W x D)
Second Bowl Size	170 x 300 x 135mm (L x W x D)
Material	18/10 Stainless Steel - 0.9mm gauge
Finish	Micro-sheen Brushed Polished Finish
Min. Base Unit	600mm
Drainer Position	Reversible

0.9

600

R

Sink **OAK1052/**

Waste kit Waste kit and cover included

MANHATTAN



Larger than other stainless steel inset sinks, the Manhattan kitchen sink boasts a large recessed drainer preventing water spillage and low profile edges providing a flush finished appearance.

25
YEAR
WARRANTY

1010 x 515mm Single Bowl Inset Sink

Main Bowl Size	400 x 420 x 190mm (L x W x D)
Material	18/10 Stainless Steel - 0.9mm gauge
Finish	Micro-sheen Brushed Polished Finish
Min. Base Unit	500mm
Drainer Position	Handed

0.9

500

Sink **MN10101L/** (left hand)
MN10101R/ (right hand)

Waste kit Waste kit included

1010 x 515mm 1.5 Bowl Inset Sink

Main Bowl Size	350 x 420 x 190mm (L x W x D)
Second Bowl Size	156 x 342 x 120mm (L x W x D)
Material	18/10 Stainless Steel - 0.9mm gauge
Finish	Micro-sheen Brushed Polished Finish
Min. Base Unit	600mm
Drainer Position	Handed

0.9

600

Sink **MN10102L/** (left hand)
MN10102R/ (right hand)

Waste kit Waste kit included

Accessories Stainless Steel Strainer Bowl **KA28SS/**



SEDONA



The Sedona kitchen sink range boasts large welded bowls with soft round profile edges whilst featuring a practical drainer designed to carry the water away with ease.

985 x 508mm Single Bowl Inset Sink

Main Bowl Size	400 x 420 x 190mm (L x W x D)
Material	18/10 Stainless Steel - 0.9mm gauge
Finish	Micro-sheen Brushed Polished Finish
Min. Base Unit	600mm
Drainer Position	Reversible

0.9

600

R

Sink **SD9851/**

Waste kit Waste kit included

985 x 508mm 1.5 Bowl Inset Sink

Main Bowl Size	350 x 420 x 190mm (L x W x D)
Second Bowl Size	156 x 342 x 120mm (L x W x D)
Material	18/10 Stainless Steel - 0.9mm gauge
Finish	Micro-sheen Brushed Polished Finish
Min. Base Unit	600mm
Drainer Position	Reversible

0.9

600

R

Sink **SD9852/**

Waste kit Waste kit included

Accessories Stainless Steel Strainer Bowl **KA28SS/**



HOUSTON



The Houston kitchen sink features an eye-catching 'waterfall' styled drainer which promises to create a design statement in any kitchen.

25
YEAR
WARRANTY

985 x 508mm Single Bowl Inset Sink

Main Bowl Size	400 x 420 x 190mm (L x W x D)
Material	18/10 Stainless Steel - 0.9mm gauge
Finish	Micro-sheen Brushed Polished Finish
Min. Base Unit	600mm
Drainer Position	Reversible

0.9

600

R

Sink **HS9851/**

Waste kit Waste kit included

985 x 508mm 1.5 Bowl Inset Sink

Main Bowl Size	350 x 420 x 190mm (L x W x D)
Second Bowl Size	156 x 342 x 125mm (L x W x D)
Material	18/10 Stainless Steel - 0.9mm gauge
Finish	Micro-sheen Brushed Polished Finish
Min. Base Unit	600mm
Drainer Position	Reversible

0.9

600

R

Sink **HS9852/**

Waste kit Waste kit included

Accessories Stainless Steel Strainer Bowl **KA28SS/**





MICHIGAN

Made from high-grade 18/10 stainless steel, the Michigan kitchen sink is a robust solution perfect for busy family homes.

25
YEAR
WARRANTY

800 x 508mm Compact Single Bowl Inset Sink

Main Bowl Size	360 x 424 x 155mm (L x W x D)
Material	18/10 Stainless Steel - 0.7mm gauge
Finish	Micro-sheen Brushed Polished Finish
Min. Base Unit	500mm
Drainer Position	Reversible

Sink **MG8001/**

Waste kit Waste kit included



0.7

500

R

950 x 508mm Single Bowl Inset Sink

Main Bowl Size	360 x 424 x 155mm (L x W x D)
Material	18/10 Stainless Steel - 0.7mm gauge
Finish	Micro-sheen Brushed Polished Finish
Min. Base Unit	500mm
Drainer Position	Reversible

Sink **MG9501/**

Waste kit Waste kit included



0.7

500

R

950 x 508mm 1.5 Bowl Inset Sink

Main Bowl Size	360 x 424 x 155mm (L x W x D)
Second Bowl Size	151 x 300 x 120mm (L x W x D)
Material	18/10 Stainless Steel - 0.7mm gauge
Finish	Micro-sheen Brushed Polished Finish
Min. Base Unit	600mm
Drainer Position	Reversible

Sink **MG9502/**

Waste kit Waste kit included



0.7

600

R



GLENDALE

The Glendale kitchen sink features a bold drainer framed with a distinct subtle ground-edge trim which provides a unique finished look incorporating two-toned stainless steel.

25
YEAR
WARRANTY

950 x 508mm Single Bowl Inset Sink

Main Bowl Size	360 x 424 x 155mm (L x W x D)
Material	18/10 Stainless Steel - 0.7mm gauge
Finish	Micro-sheen Brushed Polished Finish
Min. Base Unit	500mm
Drainer Position	Reversible

Sink **GL9501/**

Waste kit Waste kit included



0.7

500

R

950 x 508mm 1.5 Bowl Inset Sink

Main Bowl Size	360 x 424 x 155mm (L x W x D)
Second Bowl Size	156 x 342 x 120mm (L x W x D)
Material	18/10 Stainless Steel - 0.7mm gauge
Finish	Micro-sheen Brushed Polished Finish
Min. Base Unit	600mm
Drainer Position	Reversible

Sink **GL9502/**

Waste kit Waste kit included

Accessories Stainless Steel Strainer Bowl **KA28SS/**



0.7

600

R



BALTIMORE

Featuring a stylish “sun burst” designed drainer and manufactured from high-grade stainless steel, the Baltimore kitchen sink sits perfectly within a contemporary styled kitchen.

25
YEAR
WARRANTY

800 x 508mm Compact Single Bowl Inset Sink



Main Bowl Size	340 x 424 x 150mm (L x W x D)
Material	18/10 Stainless Steel - 0.7mm gauge
Finish	Micro-sheen Brushed Polished Finish
Min. Base Unit	450mm
Drainer Position	Reversible

0.7

450

R

Sink **BL8001/**

Waste kit Waste kit included

950 x 508mm Single Bowl Inset Sink



Main Bowl Size	420 x 400 x 160mm (L x W x D)
Material	18/10 Stainless Steel - 0.7mm gauge
Finish	Micro-sheen Brushed Polished Finish
Min. Base Unit	600mm
Drainer Position	Reversible

0.7

600

R

Sink **BL9501/**

Waste kit Waste kit included

950 x 508mm 1.5 Bowl Inset Sink



Main Bowl Size	340 x 410 x 160mm (L x W x D)
Second Bowl Size	175 x 320 x 80mm (L x W x D)
Material	18/10 Stainless Steel - 0.8mm gauge
Finish	Micro-sheen Brushed Polished Finish
Min. Base Unit	600mm
Drainer Position	Reversible

0.8

600

R

Sink **BL9502/**

Waste kit Waste kit included



COSMO

Featuring a slim profile top plate, the Cosmo sink sits flat against a worktop providing a sleek, contemporary finished look when installed.

25
YEAR
WARRANTY

600 x 515mm Single Bowl Inset Sink



Main Bowl Size	550 x 400 x 200mm (L x W x D)
Material	18/10 Stainless Steel - 1.0mm gauge
Finish	Micro-sheen Brushed Polished Finish
Min. Base Unit	600mm
Drainer Position	-

1.0

600

Sink **CSM60/**

Waste kit Waste kit included

SINGLE BOWL SINKS

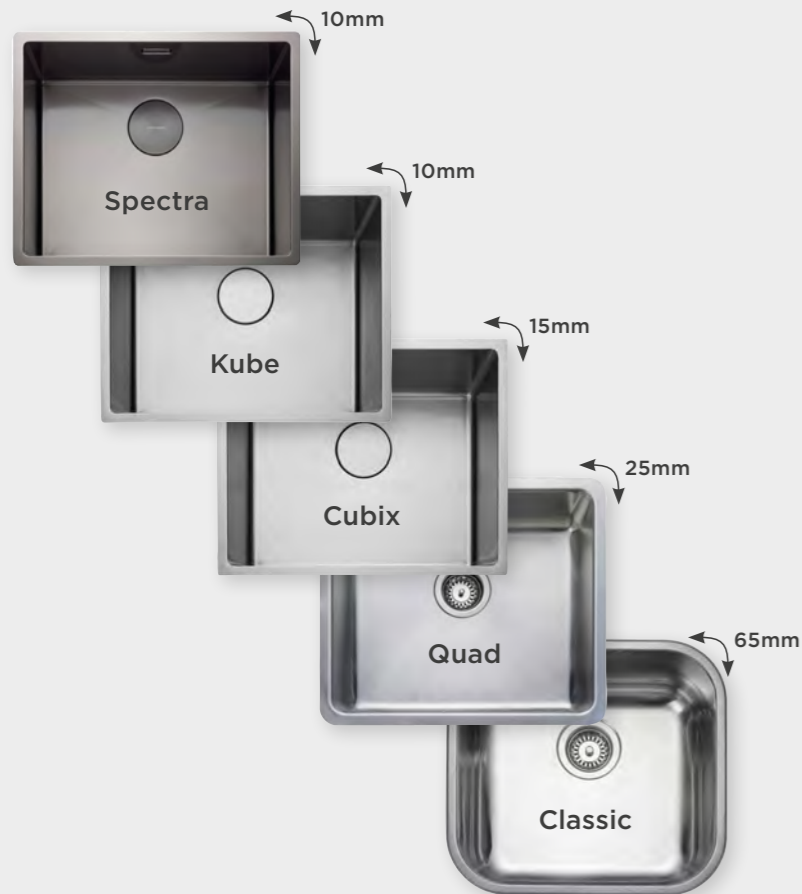
25
YEAR
WARRANTY



Undermount



Inset



Choose an undermount sink for a sleek, modern and minimalist look in your kitchen.

These sinks are installed on the underside of the work surface which extends the worktop area and offers a seamless finished look. This design maximizes the available countertop area, making undermount sinks an excellent choice for compact kitchen environments.

Our Quad, Cubix, Kube, and Spectra products are designed to offer dual fixing options. As a result, they can be utilised as either inset or undermount fittings, with both clip sets included.

We offer a variety of corner radius options. The corner radius refers to the curvature of the sink's inner corners. Traditional sinks typically feature a larger radius, while a smaller radius lends a more contemporary style.



SPECTRA



Gold colour finish shown



Left-hand shown in Copper colour finish

Create a striking sink area with Spectra, a metallic PVD stainless steel collection, which is available in three sumptuous shades designed to add dimension and glamour to any contemporary kitchen scheme.

25
YEAR
WARRANTY

540 x 440mm Single Bowl Inset/ Undermount Sink

Main Bowl Size	500 x 400 x 200mm (L x W x D)
Material	18/10 Stainless Steel - 1.0mm gauge
Finish	Micro-sheen PVD Finish
Min. Base Unit	600mm
Drainer Position	-
Installation	Inset or Undermount

1.0

600

Sink **SPE50_/_**
Waste kit Waste kit and cover included

555 x 440mm 1.5 Bowl Inset/ Undermount Sink

Main Bowl Size	340 x 400 x 200mm (L x W x D)
Second Bowl Size	160 x 400 x 140mm (L x W x D)
Material	18/10 Stainless Steel - 1.0mm gauge
Finish	Micro-sheen PVD Finish
Min. Base Unit	600mm
Drainer Position	Handed
Installation	Inset or Undermount

1.0

600

Sink **SPE3416L_/_** (Left-hand)
SPE3416R_/_ (Right-hand)
Waste kit Waste kit and cover included

CP

Copper

GL

Gold

GR

Graphite

*Replace ' _ ' in the sink code with your chosen colour prefix. GR - Graphite, GL - Gold, CP - Copper

For further details on our sinks and taps visit www.rangemastersinks.co.uk 25

KUBE

With a dramatic 10 mm radius defining the corners to this bowl type, the Kube undermount creates a geometric effect which will sit perfectly within streamlined cabinetry.

25
YEAR
WARRANTY

220 x 440mm Single Bowl Sink Inset/ Undermount Sink

Main Bowl Size	180 x 400 x 140mm (L x W x D)
Material	18/10 Stainless Steel - 1.0mm gauge
Finish	Micro-sheen Brushed Polished Finish
Min. Base Unit	300mm
Drainer Position	-
Installation	Inset or Undermount

Sink **KUBE18/**
Waste kit Waste kit and cover included

1.0

300



NEW

380 x 440 Single Bowl Inset/ Undermount Sink

Main Bowl Size	340 x 400 x 200mm (L x W x D)
Material	18/10 Stainless Steel - 1.0mm gauge
Finish	Micro-sheen Brushed Polished Finish
Min. Base Unit	450mm
Drainer Position	-
Installation	Inset or Undermount

Sink **KUBE34/**
Waste kit Waste kit and cover included

1.0

450



NEW

440 x 440mm Single Bowl Sink Inset/ Undermount Sink

Main Bowl Size	400 x 400 x 200mm (L x W x D)
Material	18/10 Stainless Steel - 1.0mm gauge
Finish	Micro-sheen Brushed Polished Finish
Min. Base Unit	500mm
Drainer Position	-
Installation	Inset or Undermount

Sink **KUBE40/**
Waste kit Waste kit and cover included

1.0

500



NEW

540 x 440 Single Bowl Inset/ Undermount Sink

Main Bowl Size	500 x 400 x 200mm (L x W x D)
Material	18/10 Stainless Steel - 1.0mm gauge
Finish	Micro-sheen Brushed Polished Finish
Min. Base Unit	600mm
Drainer Position	-
Installation	Inset or Undermount

Sink **KUBE50/**
Waste kit Waste kit and cover included

1.0

600



NEW

KUBE

25
YEAR
WARRANTY

740 x 440mm Single Bowl Inset/ Undermount Sink

Main Bowl Size	700 x 400 x 200mm (L x W x D)
Material	18/10 Stainless Steel - 1.0mm gauge
Finish	Micro-sheen Brushed Polished Finish
Min. Base Unit	800mm
Drainer Position	-
Installation	Inset or Undermount

Sink **KUBE70/**
Waste kit Waste kit and cover included

1.0

800



NEW

560 x 440 1.5 Bowl Inset/ Undermount Sink

Main Bowl Size	340 x 400 x 200mm (L x W x D)
Second Bowl Size	160 x 400 x 140mm (L x W x D)
Material	18/10 Stainless Steel - 1.0mm gauge
Finish	Micro-sheen Brushed Polished Finish
Min. Base Unit	600mm
Drainer Position	Handed
Installation	Inset or Undermount

Sink **KUBE3416L/** (left hand)
KUBE3416R/ (right hand)
Waste kit Waste kit and cover included

1.0

600



NEW

Left-hand shown

740 x 440mm 1.5 Bowl Inset/ Undermount Sink

Main Bowl Size	500 x 400 x 200mm (L x W x D)
Second Bowl Size	180 x 400 x 140mm (L x W x D)
Material	18/10 Stainless Steel - 1.0mm gauge
Finish	Micro-sheen Brushed Polished Finish
Min. Base Unit	800mm
Drainer Position	Handed
Installation	Inset or Undermount

Sink **KUBE5018L/** (left hand)
KUBE5018R/ (right hand)
Waste kit Waste kit and cover included

1.0

800



NEW

Right-hand shown

860 x 440mm Double Bowl Inset/ Undermount Sink

Main Bowl Size	400 x 400 x 200mm (L x W x D)
Second Bowl Size	400 x 400 x 200mm (L x W x D)
Material	18/10 Stainless Steel - 1.0mm gauge
Finish	Micro-sheen Brushed Polished Finish
Min. Base Unit	900mm
Drainer Position	-
Installation	Inset or Undermount

Sink **KUBE4040/**
Waste kit Waste kit and cover included

1.0

900



NEW

CUBIX

Featuring a 15mm radius, Cubix offers a modern solution. Providing ease of installation, Cubix can also be installed as inset or undermount with dual fixings included with every sink.



NEW



360 x 440mm Single Bowl Inset/Undermount Sink

Main Bowl Size	320 x 400 x 200mm (L x W x D)
Material	18/10 Stainless Steel - 1.0mm gauge
Finish	Micro-sheen Brushed Polished Finish
Min. Base Unit	400mm
Drainer Position	-
Installation	Inset or Undermount



Sink **CBX32/**
Waste kit Waste kit and cover included

NEW



460 x 440mm Single Bowl Inset/Undermount Sink

Main Bowl Size	420 x 400 x 200mm (L x W x D)
Material	18/10 Stainless Steel - 1.0mm gauge
Finish	Micro-sheen Brushed Polished Finish
Min. Base Unit	500mm
Drainer Position	-
Installation	Inset or Undermount



Sink **CBX42/**
Waste kit Waste kit and cover included

NEW



540 x 440mm Single Bowl Inset/Undermount Sink

Main Bowl Size	500 x 400 x 200mm (L x W x D)
Material	18/10 Stainless Steel - 1.0mm gauge
Finish	Micro-sheen Brushed Polished Finish
Min. Base Unit	600mm
Drainer Position	-
Installation	Inset or Undermount



Sink **CBX50/**
Waste kit Waste kit and cover included

NEW



740 x 440mm Single Bowl Inset/Undermount Sink

Main Bowl Size	700 x 400 x 200mm (L x W x D)
Material	18/10 Stainless Steel - 1.0mm gauge
Finish	Micro-sheen Brushed Polished Finish
Min. Base Unit	800mm
Drainer Position	-
Installation	Inset or Undermount



Sink **CBX70/**
Waste kit Waste kit and cover included

NEW



Left-hand shown

560 x 440mm 1.5 Bowl Inset/Undermount Sink

Main Bowl Size	320 x 400 x 200mm (L x W x D)
Second Bowl Size	180 x 400 x 140mm (L x W x D)
Material	18/10 Stainless Steel - 1.0mm gauge
Finish	Micro-sheen Brushed Polished Finish
Min. Base Unit	600mm
Drainer Position	Handed
Installation	Inset or Undermount



Sink **CBX3218L/** (left-hand)
CBX3218R/ (right-hand)
Waste kit Waste kit and cover included

Undermount Installation



Inset Installation





QUAD

Featuring a 25mm radius bowl corners, the Quad kitchen sink will perfectly complement a contemporary styled kitchen scheme.



200 x 340 Single Bowl Inset/ Undermount Sink

Main Bowl Size	160 x 300 x 120mm (L x W x D)
Material	18/10 Stainless Steel - 0.8mm gauge
Finish	Micro-sheen Brushed Polished Finish
Min. Base Unit	300mm
Drainer Position	-
Installation	Inset or Undermount

Sink **QUAD16/**
Waste kit Waste kit included



NEW



390 x 450 Single Bowl Inset/ Undermount Sink

Main Bowl Size	340 x 400 x 190mm (L x W x D)
Material	18/10 Stainless Steel - 0.8mm gauge
Finish	Micro-sheen Brushed Polished Finish
Min. Base Unit	400mm
Drainer Position	-
Installation	Inset or Undermount

Sink **QUAD34/**
Waste kit Waste kit included



NEW



NEW



530 x 450 Single Bowl Inset/ Undermount Sink

Main Bowl Size	480 x 400 x 200mm (L x W x D)
Material	18/10 Stainless Steel - 0.8mm gauge
Finish	Micro-sheen Brushed Polished Finish
Min. Base Unit	600mm
Drainer Position	-
Installation	Inset or Undermount

Sink **QUAD48/**
Waste kit Waste kit included



580 x 450 1.3 Bowl Inset/ Undermount Sink

Main Bowl Size	340 x 400 x 190mm (L x W x D)
Second Bowl Size	160 x 300 x 120mm (L x W x D)
Material	18/10 Stainless Steel - 0.8mm gauge
Finish	Micro-sheen Brushed Polished Finish
Min. Base Unit	600mm
Drainer Position	Handed
Installation	Inset or Undermount

Sink **QUAD3416L/** (Left hand)
QUAD3416R/ (Right hand)

Waste kit Waste kit included



NEW



Right-hand shown

600 x 450 1.5 Bowl Inset/ Undermount Sink

Main Bowl Size	340 x 400 x 190mm (L x W x D)
Second Bowl Size	180 x 400 x 120mm (L x W x D)
Material	18/10 Stainless Steel - 0.8mm gauge
Finish	Micro-sheen Brushed Polished Finish
Min. Base Unit	600mm
Drainer Position	Reversible & Handed Options
Installation	Inset or Undermount

Sink **QUAD3418L/** (Left hand)
QUAD3418R/ (Right hand)
QUAD3418/ (Reversible)

Waste kit Waste kit included



NEW



Reversible option

Right-hand option shown

760 x 450 Double Bowl Inset/ Undermount Sink

Main Bowl Size	340 x 400 x 190mm (L x W x D)
Second Bowl Size	340 x 400 x 190mm (L x W x D)
Material	18/10 Stainless Steel - 0.8mm gauge
Finish	Micro-sheen Brushed Polished Finish
Min. Base Unit	800mm
Drainer Position	-
Installation	Inset or Undermount

Sink **QUAD3434/**
Waste kit Waste kit included



NEW



CLASSIC

The Classic undermount kitchen sink collection features an elegant curvature to the bowl design, with a 65mm radii corner, creating a discreet sink solution suited to any kitchen scheme.



185 x 370mm Single Bowl Undermount Sink

Main Bowl Size	156 x 342 x 120mm (L x W x D)
Material	18/10 Stainless Steel - 0.8mm gauge
Finish	Micro-sheen Brushed Polished Finish
Min. Base Unit	300mm
Drainer Position	-
Installation	Undermount

Sink **UB15/**
Waste kit Waste kit included



378 x 448mm Single Bowl Undermount Sink

Main Bowl Size	350 x 420 x 190mm (L x W x D)
Material	18/10 Stainless Steel - 0.8mm gauge
Finish	Micro-sheen Brushed Polished Finish
Min. Base Unit	400mm
Drainer Position	-
Installation	Undermount

Sink **UB35/**
Waste kit Waste kit included



460 x 440mm Single Bowl Undermount Sink

Main Bowl Size	420 x 400 x 190mm (L x W x D)
Material	18/10 Stainless Steel - 0.9mm gauge
Finish	Micro-sheen Brushed Polished Finish
Min. Base Unit	500mm
Drainer Position	-
Installation	Undermount

Sink **UB40/**
Waste kit Waste kit included



490 x 460mm Single Bowl Undermount Sink

Main Bowl Size	450 x 420 x 190mm (L x W x D)
Material	18/10 Stainless Steel - 0.9mm gauge
Finish	Micro-sheen Brushed Polished Finish
Min. Base Unit	600mm
Drainer Position	-
Installation	Undermount

Sink **UB45/**
Waste kit Waste kit included

25 YEAR WARRANTY

0.8

300



Reversible shown

Left-hand shown

597 x 472mm 1.5 Bowl Undermount Sink

Main Bowl Size	350 x 420 x 190mm (L x W x D)
Second Bowl Size	156 x 342 x 120mm (L x W x D)
Material	18/10 Stainless Steel - 0.9mm gauge
Finish	Micro-sheen Brushed Polished Finish
Min. Base Unit	600mm
Drainer Position	Reversible & Handed Options
Installation	Undermount

Sink **UB3515/** (reversible)
UB3515L/ (left-hand)
UB3515R/ (right-hand)
Waste kit Waste kit included

25 YEAR WARRANTY

0.9

600

R

0.8

400



Left-hand shown

671 x 460mm 1.5 Bowl Undermount Sink

Main Bowl Size	420 x 400 x 190mm (L x W x D)
Second Bowl Size	156 x 342 x 120mm (L x W x D)
Material	18/10 Stainless Steel - 0.9mm gauge
Finish	Micro-sheen Brushed Polished Finish
Min. Base Unit	800mm
Drainer Position	Handed
Installation	Undermount

Sink **UB4015L/** (left-hand)
UB4015R/ (right-hand)
Waste kit Waste kit included

0.9

800

0.9

500



787 x 472mm Double Bowl Undermount Sink

Main Bowl Size	350 x 420 x 190mm (L x W x D)
Second Bowl Size	350 x 420 x 190mm (L x W x D)
Material	18/10 Stainless Steel - 0.9mm gauge
Finish	Micro-sheen Brushed Polished Finish
Min. Base Unit	800mm
Drainer Position	-
Installation	Undermount

Sink **UB3535/**
Waste kit Waste kit included

0.9

800

0.9

600



945 x 460mm Double Bowl Undermount Sink

Main Bowl Size	420 x 400 x 190mm (L x W x D)
Second Bowl Size	420 x 400 x 190mm (L x W x D)
Material	18/10 Stainless Steel - 0.9mm gauge
Finish	Micro-sheen Brushed Polished Finish
Min. Base Unit	1000mm
Drainer Position	-
Installation	Undermount

Sink **UB4040/**
Waste kit Waste kit included

0.9

1000



The Bold, Contemporary & Robust Choice

Choose a granite sink for a contemporary, sleek finished look. There are an array of different designs to choose from in a variety of different colours.



IGNEOUS GRANITE

Constructed from a patented formula of 80% quartz - the toughest element of granite - and high-grade acrylic, the Igneous sink collection is literally rock solid. Its natural anti-bacterial surface repels microbes and stains which means cleaning is a dream.

KEY FEATURES



DURABLE MATERIAL

Resistant against knocks, scratches, stains and heat.



HYGIENIC SURFACE

Non-porous surface which repels microbes and stains making the sink much easier to clean.



UV STABILITY

Fade free colour finish for years to come.



25 YEAR WARRANTY

CHOOSE FROM 7 DIFFERENT COLOURS

GRANITE KITCHEN SINKS





PRATO

Divided into three different working levels to maximise the space available within the bowl to provide a functional compact workstation which will help the aid of food preparation for the everyday culinary chef. Sliding accessories (cutting board, colander and flex drainer) can be positioned on three levels dependent on your food preparation needs.

25
YEAR
WARRANTY

570 x 510mm Single Bowl Inset Sink Supplied with Accessories

Main Bowl Size	506 x 386 x 200mm (L x W x D)
Material	Igneous Granite
Finish	Arctic White, Charcoal, Concrete or Pebble
Min. Base Unit	600mm
Drainer Position	-

600

Sink **PRA570__/_**

Waste kit Waste kit included

790 x 510mm Large Single Bowl Inset Sink Supplied with Accessories

Main Bowl Size	726 x 386 x 200mm (L x W x D)
Material	Igneous Granite
Finish	Arctic White, Charcoal, Concrete or Pebble
Min. Base Unit	800mm
Drainer Position	-

800

Sink **PRA790__/_**

Waste kit Waste kit included

Replace '___' in the sink code with your chosen colour prefix: AW - Arctic White, CO - Concrete Grey, CH - Charcoal Black, PE - Pebble

NEW



Pebble finish with accessories shown

NEW



Arctic White finish with accessories shown

AW

CH

CO

PE



TOPAZ

Featuring sharp geometric bowls and a classic lined drainer design, the Topaz range will look equally at home in a contemporary or traditional kitchen.

25
YEAR
WARRANTY

860 x 510mm Compact Single Bowl Inset Sink

Main Bowl Size	330 x 421 x 200mm (L x W x D)
Material	Igneous Granite
Finish	Arctic White, Charcoal, Concrete or Pebble
Min. Base Unit	450mm
Drainer Position	Reversible

450

R

Sink **TOP860__/_**

Waste kit Waste kit included

NEW



Pebble finish shown

1000 x 510mm Single Bowl Inset Sink

Main Bowl Size	478 x 421 x 200mm (L x W x D)
Material	Igneous Granite
Finish	Arctic White, Charcoal, Concrete or Pebble
Min. Base Unit	600mm
Drainer Position	Reversible

600

R

Sink **TOP1001__/_**

Waste kit Waste kit included

NEW



Charcoal finish shown

1000 x 510mm 1.5 Bowl Inset Sink

Main Bowl Size	319 x 421 x 200mm (L x W x D)
Second Bowl Size	150 x 421 x 140mm (L x W x D)
Material	Igneous Granite
Finish	Arctic White, Charcoal, Concrete or Pebble
Min. Base Unit	600mm
Drainer Position	Reversible

600

R

Sink **TOP1002__/_**

Waste kit Waste kit included

NEW



Concrete finish shown

AW

CH

CO

PE

Replace '___' in the sink code with your chosen colour prefix: AW - Arctic White, CO - Concrete Grey, CH - Charcoal Black, PE - Pebble



MAYON

Featuring sharp geometric bowls and a smooth drainer design, the Mayon range also features a sleek chrome branded overflow cover adding a premium finish to the overall sink design.

25 YEAR WARRANTY

690 x 510mm Compact Single Bowl Inset Sink

Main Bowl Size	365 x 448 x 195mm (L x W x D)
Material	Igneous Granite
Finish	Ash Black, Crystal White or Dove Grey
Min. Base Unit	450mm
Drainer Position	Reversible

Sink **MAY690__/_**

Waste kit Waste kit included



Crystal White finish shown

450

R

1000 x 510mm Single Bowl Inset Sink

Main Bowl Size	500 x 446 x 195mm (L x W x D)
Material	Igneous Granite
Finish	Ash Black, Crystal White or Dove Grey
Min. Base Unit	600mm
Drainer Position	Reversible

Sink **MAY1051__/_**

Waste kit Waste kit included

Accessories Bamboo Chopping Board **KA10/**



Ash Black finish shown

600

R

1000 x 510mm 1.5 Bowl Inset Sink

Main Bowl Size	334 x 446 x 195mm (L x W x D)
Second Bowl Size	167 x 296 x 120mm (L x W x D)
Material	Igneous Granite
Finish	Ash Black, Crystal White or Dove Grey
Min. Base Unit	600mm
Drainer Position	Reversible

Sink **MAY1052__/_**

Waste kit Waste kit included

Accessories Bamboo Chopping Board **KA10/**



Dove Grey finish shown

600

R

Replace '__' in the sink code with your chosen colour prefix: AS - Ash Black, CW - Crystal White, DG - Dove Grey

AS

CW

DG

AMETHYST

Featuring large bowls with a soft edged profile and modern classic lines, the Amethyst kitchen sink collection looks equally at home in a contemporary or traditional styled kitchen.

25 YEAR WARRANTY

860 x 500mm Single Bowl Inset Sink

Main Bowl Size	348 x 422 x 204mm (L x W x D)
Material	Igneous Granite
Finish	Ash Black, Crystal White or Dove Grey
Min. Base Unit	450mm
Drainer Position	Reversible

Sink **AME860__/_**

Waste kit Waste kit included

Accessories Bamboo Chopping Board **KA10/**



Crystal White finish shown

450

R

1000 x 500mm Single Bowl Inset Sink

Main Bowl Size	482 x 422 x 220mm (L x W x D)
Material	Igneous Granite
Finish	Ash Black, Crystal White or Dove Grey
Min. Base Unit	600mm
Drainer Position	Reversible

Sink **AME1051__/_**

Waste kit Waste kit included

Accessories Bamboo Chopping Board **KA10/**



Ash Black finish shown

600

R

1000 x 500mm 1.5 Bowl Inset Sink

Main Bowl Size	341 x 422 x 204mm (L x W x D)
Second Bowl Size	161 x 301 x 148mm (L x W x D)
Material	Igneous Granite
Finish	Ash Black, Crystal White or Dove Grey
Min. Base Unit	600mm
Drainer Position	Reversible

Sink **AME1052__/_**

Waste kit Waste kit included

Accessories Bamboo Chopping Board **KA10/**



Dove Grey finish shown

600

R

Replace '__' in the sink code with your chosen colour prefix: AS - Ash Black, CW - Crystal White, DG - Dove Grey

AS

CW

DG



ELEMENTS

Elements combines style with functionality; its recessed drainer ensures water spillage is kept to a minimum, while its large square look bowls add contemporary design to your kitchen style.



1000 x 500mm Single Bowl Inset Sink

Main Bowl Size	480 x 420 x 180mm (L x W x D)
Material	Igneous Granite
Finish	Ash Black, Crystal White or Dove Grey
Min. Base Unit	600mm
Drainer Position	Reversible

Sink **ELE1051** /
 Waste kit Waste kit included
 Accessories Bamboo Chopping Board **KA10** /



Crystal White finish shown

1000 x 500mm 1.5 Bowl Inset Sink

Main Bowl Size	380 x 420 x 180mm (L x W x D)
Second Bowl Size	125 x 282 x 120mm (L x W x D)
Material	Igneous Granite
Finish	Ash Black, Crystal White or Dove Grey
Min. Base Unit	600mm
Drainer Position	Reversible

Sink **ELE1052** /
 Waste kit Waste kit included
 Accessories Bamboo Chopping Board **KA10** /



Dove Grey finish shown



Replace '___' in the sink code with your chosen colour prefix: AS - Ash Black, CW - Crystal White, DG - Dove Grey

AS

CW

DG



ANDESITE

Encompassing a simple yet sleek drainer pattern design and featuring large geometric bowls with low radius corners, the Andesite kitchen sink offers a stunning design for a trend conscious home.



860 x 500mm Single Bowl Inset Sink

Main Bowl Size	347 x 430 x 200mm (L x W x D)
Material	Igneous Granite
Finish	Ash Black, Crystal White or Dove Grey
Min. Base Unit	450mm
Drainer Position	Reversible

Sink **AND860** /
 *Dove Grey finish only available with AND860

Waste kit Waste kit included



Crystal White finish shown



1000 x 500mm Single Bowl Inset Sink

Main Bowl Size	480 x 430 x 200mm (L x W x D)
Material	Igneous Granite
Finish	Ash Black, Crystal White and Stone
Min. Base Unit	600mm
Drainer Position	Reversible

Sink **AND1051** /
 **Stone finish only available with AND1051 and AND1052

Waste kit Waste kit included



Ash Black finish shown



1000 x 500mm 1.5 Bowl Inset Sink

Main Bowl Size	345 x 430 x 200mm (L x W x D)
Second Bowl Size	155 x 340 x 146mm (L x W x D)
Material	Igneous Granite
Finish	Ash Black, Crystal White and Stone
Min. Base Unit	600mm
Drainer Position	Reversible

Sink **AND1052** /
 **Stone finish only available with AND1051 and AND1052

Waste kit Waste kit included



Stone finish shown



Replace '___' in the sink code with your chosen colour prefix: AS - Ash Black, CW - Crystal White, DG - Dove Grey, SN - Stone

AS

CW

DG

SN

LOA

The Loa sink is available in four colour options and features a sleek, modern design that is ideal for contemporary kitchens.



860 x 500mm Compact Single Bowl Inset Sink

Main Bowl Size	330 x 435 x 180mm (L x W x D)
Material	Igneous Granite
Finish	Arctic White, Charcoal, Concrete or Pebble
Min. Base Unit	450mm
Drainer Position	Reversible

Sink **LOA860__/_**

Waste kit Waste kit included



Arctic White finish shown

1000 x 500mm Single Bowl Inset Sink

Main Bowl Size	480 x 435 x 180mm (L x W x D)
Material	Igneous Granite
Finish	Arctic White, Charcoal, Concrete or Pebble
Min. Base Unit	600mm
Drainer Position	Reversible

Sink **LOA1051__/_**

Waste kit Waste kit included



Pebble finish shown

1000 x 500mm 1.5 Bowl Inset Sink

Main Bowl Size	360 x 434 x 180mm (L x W x D)
Second Bowl Size	145 x 300 x 128mm (L x W x D)
Material	Igneous Granite
Finish	Arctic White, Charcoal, Concrete or Pebble
Min. Base Unit	600mm
Drainer Position	Reversible

Sink **LOA1052__/_**

Waste kit Waste kit included



Charcoal finish shown

1160 x 500mm Double Bowl Inset Sink

Main Bowl Size	338 x 435 x 180mm (L x W x D)
Second Bowl Size	338 x 435 x 180mm (L x W x D)
Material	Igneous Granite
Finish	Arctic White, Charcoal, Concrete or Pebble
Min. Base Unit	800mm
Drainer Position	Reversible

Sink **LOA1152__/_**

Waste kit Waste kit included



Concrete finish shown



Replace '___' in the sink code with your chosen colour prefix: AW - Arctic White, CO - Concrete Grey, CH - Charcoal Black, PE - Pebble

ORIDIAN INSET

Create a modern finished look with the addition of an Oridian granite bowl. The Oridian collection features large bowls offering ample space to wash large pots and pans, available in separate inset and undermount collections.



570 x 500mm Single Bowl Inset Sink

Main Bowl Size	500 x 400 x 200mm (L x W x D)
Material	Igneous Granite
Finish	Arctic White, Charcoal, Concrete or Pebble
Min. Base Unit	600mm
Drainer Position	-
Installation	Inset

Sink **ORI570__/_**

Waste kit Waste kit included



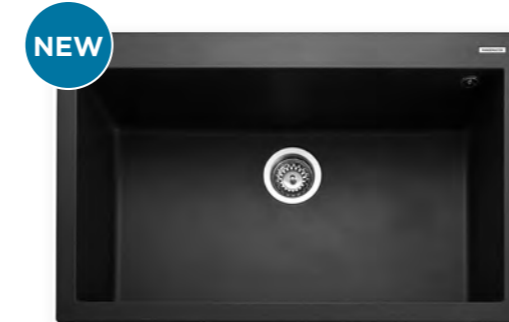
Arctic White finish shown

790 x 500mm Single Bowl Inset Sink

Main Bowl Size	720 x 400 x 200mm (L x W x D)
Material	Igneous Granite
Finish	Arctic White, Charcoal, Concrete or Pebble
Min. Base Unit	800mm
Drainer Position	-
Installation	Inset

Sink **ORI7901__/_**

Waste kit Waste kit included



Charcoal finish shown

590 x 500mm 1.5 Bowl Inset Sink

Main Bowl Size	325 x 400 x 200mm (L x W x D)
Second Bowl Size	160 x 400 x 155mm (L x W x D)
Material	Igneous Granite
Finish	Arctic White, Charcoal, Concrete or Pebble
Min. Base Unit	600mm
Drainer Position	Left hand
Installation	Inset

Sink **ORI5902__/_**

Waste kit Waste kit included



Concrete finish shown

790 x 500mm Double Bowl Inset Sink

Main Bowl Size	343 x 395 x 210mm (L x W x D)
Second Bowl Size	343 x 395 x 210mm (L x W x D)
Material	Igneous Granite
Finish	Arctic White, Charcoal, Concrete or Pebble
Min. Base Unit	800mm
Drainer Position	-
Installation	Inset

Sink **ORI7902__/_**

Waste kit Waste kit included



Pebble finish shown



Replace '___' in the sink code with your chosen colour prefix: AW - Arctic White, CO - Concrete Grey, CH - Charcoal Black, PE - Pebble

ORIDIAN UNDERMOUNT

NEW



Arctic White finish shown

540 x 440mm Single Bowl Undermount Sink

Main Bowl Size	500 x 400 x 200mm (L x W x D)
Material	Igneous Granite
Finish	Arctic White, Charcoal, Concrete or Pebble
Min. Base Unit	600mm
Drainer Position	-
Installation	Undermount

Sink **ORIUN540__/_**

Waste kit Waste kit included

25 YEAR WARRANTY

600



NEW



Charcoal finish shown

760 x 440mm Single Bowl Undermount Sink

Main Bowl Size	720 x 400 x 200mm (L x W x D)
Material	Igneous Granite
Finish	Arctic White, Charcoal, Concrete or Pebble
Min. Base Unit	800mm
Drainer Position	-
Installation	Undermount

Sink **ORIUN7601__/_**

Waste kit Waste kit included

800

PARAGON



Crystal White finish shown

Go under-mounted for a sleek, seamless worksurface. Boasting a modern, geometric design, the Paragon kitchen sink is the perfect match for composite worksurfaces.

25 YEAR WARRANTY

533 x 457mm Single Bowl Inset/ Undermount Sink

Main Bowl Size	469 x 393 x 209mm (L x W x D)
Material	Igneous Granite
Finish	Ash Black, Crystal White or Grey
Min. Base Unit	600mm
Drainer Position	-
Installation	Inset or Undermount

Sink **PAR4553__/_**

Waste kit Waste kit included

600

R

NEW



Concrete finish shown

560 x 440mm 1.5 Bowl Undermount Sink

Main Bowl Size	325 x 400 x 200mm (L x W x D)
Second Bowl Size	160 x 400 x 155mm (L x W x D)
Material	Igneous Granite
Finish	Arctic White, Charcoal, Concrete or Pebble
Min. Base Unit	600mm
Drainer Position	Left hand
Installation	Undermount

Sink **ORIUN5602__/_**

Waste kit Waste kit included

600



Ash Black finish shown

550 x 430mm Single Bowl Inset/ Undermount Sink

Main Bowl Size	310 x 370 x 200mm (L x W x D)
Second Bowl Size	152 x 370 x 130mm (L x W x D)
Material	Igneous Granite
Finish	Ash Black, Crystal White or Dove Grey
Min. Base Unit	600mm
Drainer Position	Right hand
Installation	Inset or Undermount

Sink **PAR3115__/_**

*Dove Grey finish only available with PAR3115

Waste kit Waste kit included

600

NEW



Pebble finish shown

760 x 435mm Double Bowl Undermount Sink

Main Bowl Size	343 x 395 x 220mm (L x W x D)
Second Bowl Size	343 x 395 x 220mm (L x W x D)
Material	Igneous Granite
Finish	Arctic White, Charcoal, Concrete or Pebble
Min. Base Unit	800mm
Drainer Position	-
Installation	Undermount

Sink **ORIUN7602__/_**

Waste kit Waste kit included

800



Grey finish shown

824 x 481mm Double Bowl Undermount Sink

Main Bowl Size	362 x 395 x 241mm (L x W x D)
Second Bowl Size	362 x 395 x 241mm (L x W x D)
Material	Igneous Granite
Finish	Ash Black, Crystal White or Grey
Min. Base Unit	900mm
Drainer Position	-
Installation	Undermount

Sink **PAR3641__/_**

Waste kit Waste kit included

900

R

Replace '___' in the sink code with your chosen colour prefix: AW - Arctic White, CO - Concrete Grey, CH - Charcoal Black, PE - Pebble

AW

CH

CO

PE

AS

CW

CG

DG



FIRE-CLAY KITCHEN SINKS

The Classic 'Statement Piece' Choice

The kitchen sink is one of the most used items of your kitchen, so why not add a statement piece to enhance the overall look of your space?

With the addition of a fire-clay ceramic sink, you are guaranteed a sink which will retain its high-gloss colour and shine for its lifetime.

Our ceramic sinks are manufactured using clay sourced from Cornwall, UK. Moulded and fired at high temperatures, our ceramic sinks are robust and hygienic thanks to the high-gloss glaze finish with each sink.

There are a choice of inset, undermount and sit-on Belfast options available in a variety of different styles. Thanks to its natural high-gloss finish, a fire-clay ceramic sink beautifully complements any style of worktop surface.

The Hartland inset Belfast range provides the traditional and sought-after look of a Belfast sink, without the need to invest in a solid worktop as its inset design is compatible with any type of work surface including laminate.

KEY FEATURES



EASY CLEAN SURFACE

Thanks to its smooth glazed surface, a Rangemaster fire-clay ceramic sink is easy to clean as microbes and stains just simply wipe away.



SUPERIOR STRENGTH

Thanks to the high gloss glazed finish, Rangemaster ceramic sinks are highly resistant against heat, stains and scratches.



EXPANDED COLOUR RANGE

Choose from high gloss White or Matt Black



ARLINGTON

Modelled from our flagship stainless steel range, Arlington, a new ceramic collection encompasses its iconic design styling and is offered to the market as a reversible solution providing flexibility.

10 YEAR WARRANTY

985 x 500mm Single Bowl Inset Sink

Main Bowl Size	424 x 374 x 193mm (L x W x D)
Material	Fire-Clay Ceramic
Finish	Gloss White
Min. Base Unit	600mm
Drainer Position	Reversible

Sink **CAR1051WH/**

Waste kit Waste kit included

600

R

NEW



985 x 500mm 1.5 Bowl Inset Sink

Main Bowl Size	334 x 375 x 195mm (L x W x D)
Second Bowl Size	172 x 260 x 145mm (L x W x D)
Material	Fire-Clay Ceramic
Finish	Gloss White
Min. Base Unit	600mm
Drainer Position	Reversible

Sink **CAR1052WH/**

Waste kit Waste kit included

600

R

NEW



AUSTELL

A modern design with bold lines, the Austell sits at home within a traditional or modern style kitchen. Now available in a new Matt Black finish.

10 YEAR WARRANTY

1000 x 500mm Single Bowl Inset Sink

Main Bowl Size	449 x 415 x 190mm (L x W x D)
Material	Fire-Clay Ceramic
Finish	Gloss White or Matt Black
Min. Base Unit	600mm
Drainer Position	Reversible

Sink **CAU10101WH/** (gloss white)
CAU10101MB/ (matt black)

Waste kit Waste kit included

600

R



White finish shown

1000 x 500mm 1.5 Bowl Inset Sink

Main Bowl Size	340 x 415 x 190mm (L x W x D)
Second Bowl Size	170 x 300 x 142mm (L x W x D)
Material	Fire-Clay Ceramic
Finish	Gloss White or Matt Black
Min. Base Unit	600mm
Drainer Position	Reversible

Sink **CAU10102WH/** (gloss white)
CAU10102MB/ (matt black)

Waste kit Waste kit included

600

R



Matt Black finish shown

MB

WH

NEW - Matt Black

White



RUSTIC

Offering a modern, farmhouse feel, Rustic kitchen sinks are designed to cater the needs of an enthusiastic chef.

10 YEAR WARRANTY

1000 x 500mm Single Bowl Inset Sink

Main Bowl Size	460 x 390 x 195mm (L x W x D)
Material	Fire-Clay Ceramic
Finish	Gloss White
Min. Base Unit	600mm
Drainer Position	Reversible

600

R

Sink **CRT10101WH/**

Waste kit Waste kit included



1000 x 500mm 1.5 Bowl Inset Sink

Main Bowl Size	360 x 390 x 195mm (L x W x D)
Second Bowl Size	147 x 260 x 120mm (L x W x D)
Material	Fire-Clay Ceramic
Finish	Gloss White
Min. Base Unit	600mm
Drainer Position	Reversible

600

R

Sink **CRT10202WH/**

Waste kit Waste kit included



TENBY

Classically designed, the Tenby collection is available in single and 1.5 bowl options. The compact 850 x 500mm variant fits smaller 500mm cabinet sizes - ideal for smaller kitchen spaces.

10 YEAR WARRANTY

850 x 500mm Single Bowl Inset Sink

Main Bowl Size	340 x 370 x 200mm (L x W x D)
Material	Fire-Clay Ceramic
Finish	Gloss White
Min. Base Unit	500mm
Drainer Position	Reversible

500

R

Sink **CTE8501WH/**

Waste kit Waste kit included



997 x 497mm 1.5 Bowl Inset Sink

Main Bowl Size	330 x 370 x 215mm (L x W x D)
Second Bowl Size	135 x 253 x 128mm (L x W x D)
Material	Fire-Clay Ceramic
Finish	Gloss White
Min. Base Unit	600mm
Drainer Position	Reversible

600

R

Sink **CTE10102WH/**

Waste kit Waste kit included





HARTLAND

Thanks to its inset installation method, you can achieve a Belfast look sink with any worktop material type with Hartland. Its deep apron front profile adds a design statement in any contemporary or traditional style of kitchen.

10
YEAR
WARRANTY

622 x 494mm Apron Front Belfast Inset Sink

Main Bowl Size	540 x 401 x 186mm (L x W x D)
Overall Height:	170mm (apron front)
Material	Fire-Clay Ceramic
Finish	Gloss White
Min. Base Unit	600mm
Drainer Position	-

600
mm

Sink **CHA622WH/**

Waste kit Waste kit included



RUSTIQUE

Create a modern finished look with the addition of a Rustique fire-clay ceramic bowl. Fitted as either an inset or undermount sink, the Rustique will provide a real focal point in the kitchen and contrast excellently to all colours and finishes.

10
YEAR
WARRANTY

234 x 460mm Single Bowl Inset/ Undermount Sink

Main Bowl Size	174 x 400 x 195mm (L x W x D)
Material	Fire-Clay Ceramic
Finish	Gloss White
Min. Base Unit	300mm
Drainer Position	-
Installation	Inset or Undermount

300
mm

Sink **CRUB1740WH/**

Waste kit Waste kit included



445mm Ø Single Bowl Inset/ Undermount Sink

Main Bowl Size	385mm Ø
Material	Fire-Clay Ceramic
Finish	Gloss White
Min. Base Unit	500mm
Drainer Position	-
Installation	Inset or Undermount

500
mm

Sink **CRUB385WH/**

Waste kit Waste kit included



RUSTIQUE



462 x 462mm Single Bowl Inset/ Undermount Sink

Main Bowl Size	400 x 400 x 195mm (L x W x D)
Material	Fire-Clay Ceramic
Finish	Gloss White
Min. Base Unit	500mm
Drainer Position	-
Installation	Inset or Undermount

Sink **CRUB4040WH/**

Waste kit Waste kit included

10
YEAR
WARRANTY

500



RUSTIQUE

NEW



557 x 430mm Single Bowl Inset/ Undermount Sink

Main Bowl Size	494 x 367 x 194mm (L x W x D)
Material	Fire-Clay Ceramic
Finish	Gloss White
Min. Base Unit	600mm
Drainer Position	-
Installation	Inset or Undermount

Sink **CRUB4936WH/**

Waste kit Waste kit included

600



598 x 462mm Single Bowl Inset/ Undermount Sink

Main Bowl Size	536 x 401 x 195mm (L x W x D)
Material	Fire-Clay Ceramic
Finish	Gloss White
Min. Base Unit	600mm (inset) 700mm (undermount)
Drainer Position	-
Installation	Inset or Undermount

Sink **CRUB5340WH/**

Waste kit Waste kit included

600

Inset

700

Undermount



557 x 430mm 1.5 Bowl Inset/ Undermount Sink

Main Bowl Size	330 x 367 x 189mm (L x W x D)
Second Bowl Size	146 x 367 x 189mm (L x W x D)
Material	Fire-Clay Ceramic
Finish	Gloss White
Min. Base Unit	600mm
Drainer Position	Right-hand
Installation	Inset or Undermount

Sink **CRUB3315WH/**

Waste kit Waste kit included

600

NEW



600 x 522mm 1.5 Bowl Inset/ Undermount Sink

Main Bowl Size	360 x 460 x 195mm (L x W x D)
Second Bowl Size	162 x 300 x 175mm (L x W x D)
Material	Fire-Clay Ceramic
Finish	Gloss White
Min. Base Unit	600mm (inset) 700mm (undermount)
Drainer Position	Right-hand
Installation	Inset or Undermount

Sink **CRUB3314WH/**

Waste kit Waste kit included

10
YEAR
WARRANTY

600

Inset

700

Undermount



595 x 460mm 1.5 Bowl Inset/ Undermount Sink

Main Bowl Size	337 x 400 x 196mm (L x W x D)
Second Bowl Size	183 x 400 x 176mm (L x W x D)
Material	Fire-Clay Ceramic
Finish	Gloss White
Min. Base Unit	600mm (inset) 700mm (undermount)
Drainer Position	Right-hand
Installation	Inset or Undermount

Sink **CRUB3216WH/**

Waste kit Waste kit included

600

Inset

700

Undermount

796 x 462mm Double Bowl Inset/ Undermount Sink

Main Bowl Size	431 x 401 x 196mm (L x W x D)
Second Bowl Size	286 x 401 x 196mm (L x W x D)
Material	Fire-Clay Ceramic
Finish	Gloss White
Min. Base Unit	900mm
Drainer Position	Right-hand
Installation	Inset or Undermount

Sink **CRUB4329WH/**

Waste kit Waste kit included

900



FARMHOUSE

Created seamlessly to blend modern living with a traditional country kitchen, the Farmhouse Belfast kitchen sink is a stylish alternative to a classic design.



595 x 455mm Single Bowl Sit-on Belfast Sink

Main Bowl Size	535 x 395 x 222mm (L x W x D)
Overall Height	252mm
Material	Fire-Clay Ceramic
Finish	Gloss White
Min. Base Unit	600mm
Drainer Position	Reversible



Sink **CFBL595WH/ - 60mm waste**
CFBL59590WH/ - 90mm waste **NEW**

Waste kit Waste kit included

795 x 460mm Single Bowl Sit-on Belfast Sink

Main Bowl Size	735 x 400 x 197mm (L x W x D)
Overall Height	220mm
Material	Fire-Clay Ceramic
Finish	Gloss White
Min. Base Unit	800mm
Drainer Position	-



Sink **CFBL795WH/**

Waste kit Waste kit included

NEW WASTE SIZE



NEW



CLASSIC BELFAST

793 x 491mm Double Bowl Sit-on Belfast Sink

Main Bowl Size	366 x 450 x 195mm (L x W x D)
Second Bowl Size	366 x 450 x 195mm (L x W x D)
Overall Height	220mm
Material	Fire-Clay Ceramic
Finish	Gloss White
Min. Base Unit	800mm
Drainer Position	-

Sink **CFBL800WH/**

Waste kit Waste kit included

895 x 460mm Double Bowl Sit-on Belfast Sink

Main Bowl Size	417 x 420 x 194mm (L x W x D)
Second Bowl Size	417 x 420 x 194mm (L x W x D)
Overall Height	220 mm
Material	Fire-Clay Ceramic
Finish	Gloss White
Min. Base Unit	900mm
Drainer Position	-

Sink **CFBL900WH/**

Waste kit Waste kit included

The Classic Belfast kitchen sink features a solid design which typifies the very heart of the home. Finished in a high lustre white gloss, complete with a traditionally styled weir waste overflow.

595 x 455mm Single Bowl Sit-on Belfast Sink

Main Bowl Size	525 x 385 x 215mm (L x W x D)
Overall Height	250mm
Material	Fire-Clay Ceramic
Finish	Gloss White
Min. Base Unit	600mm
Drainer Position	Reversible

Sink **CCBL595WH/**

Waste kit Waste Kit sold separately, please order **WKIT13/**

800 x 500mm Double Bowl Sit-on Belfast Sink

Main Bowl Size	365 x 450 x 200mm (L x W x D)
Second Bowl Size	365 x 450 x 200mm (L x W x D)
Overall Height	220mm
Material	Fire-Clay Ceramic
Finish	Gloss White
Min. Base Unit	800mm
Drainer Position	-

Sink **CDB800WH/**

Waste kit Waste Kit sold separately, please order **WKIT24/**





SANDWOOD



The newly introduced Sandwood Fire-clay Sink elegantly combines functionality with classic country charm, showcasing a sit-on base that enhances the aesthetic appeal of any kitchen.

10
YEAR
WARRANTY

597 x 630mm Sit-on Butler Sink

Main Bowl Size	531 x 418 x 191mm (L x W x D)
Overall Height	220mm
Material	Fire-Clay Ceramic
Finish	Gloss White
Min. Base Unit	600mm
Drainer Position	-

600
mm

Sink **SAN597WH/**

Waste kit Waste kit included

GRANGE



Matt Black finish shown

The Grange Belfast features slim profile walls with sharper radius corners - offering a contemporary sit-on Belfast option which benefits from a slightly larger bowl.

10
YEAR
WARRANTY

595 x 455 Single Bowl Sit-on Belfast Sink

Main Bowl Size	555 x 415 x 227mm (L x W x D)
Overall Height	250mm
Material	Fire-Clay Ceramic
Finish	Gloss White or Matt Black
Min. Base Unit	600mm
Drainer Position	Reversible

600
mm

R

Sink **CGR595WH/** Gloss White
CGR595MB/ Matt Black

Waste kit Waste kit included

BELFAST



Choose the Belfast for a contemporary finished look; featuring a large bowl offering ample space to wash large pots and pans.

595 x 475mm Single Bowl Sit-on Belfast Sink

Main Bowl Size	550 x 420 x 200mm(L x W x D)
Overall Height	220mm
Material	Fire-Clay Ceramic
Finish	Gloss White
Min. Base Unit	600mm
Drainer Position	-

600
mm

Sink **CBL595WH/**

Waste kit Waste Kit sold separately, please order **WKIT15/**

MB

WH



KITCHEN TAPS & ACCESSORIES

The Finishing Touches

Complement your kitchen sink with a Rangemaster tap, waste disposal unit and compatible accessory. Our taps and accessories have been designed to help assist with daily tasks so that cooking and cleaning are made easier.

TAPS

All of our taps are manufactured from high-grade brass and finished with state of the art long-lasting electrolytic coatings. A ceramic disc cartridge is also included with every tap which provides smooth handle movement and ensures the user has full control over the flow and temperature of the water.

KEY FEATURES



ANTI-SPLASH SPOUT

The spout features a honeycomb aerator design which mixes air with water to emit a soft 'champagne like' water flow with no splash.



PULL-OUT HOSE

For ultimate food preparation and cleaning results, choose a tap with a pull out hose. The majority of our designs feature a retractable hose which sits discreetly within the tap not altering its appearance from a standard tap.



WATER PRESSURE

The flow of water is determined from the water pressure available in your home, identifying the type of plumbing system already installed will help you choose a tap to suit your water pressure.



ALL PRESSURE

The majority of our taps have been designed to work with all plumbing systems, including low pressure hot water tanks. Look for the 'A' symbol opposite across our range, which highlights compatibility with all water systems from 0.2 bar onwards.



MEDIUM PRESSURE

Some of our taps require plumbing systems with a higher bar pressure of 0.5 bar onwards, look for the 'M' symbol opposite against these types of taps.



HIGH PRESSURE

Taps with a 'H' symbol will require a plumbing system with 1.0 bar or higher when installing.

4-in-1 Hot Water Taps GEO Intense

Your water. Your function. Available on demand.

Take advantage of the GEO Intense tap and all it has to offer: whether you're brewing your first cup of the day or refilling your water bottle for a day out and about - this tap delivers on demand.

- Features a dual stage safety handle with push button mechanism for ease of use for the user
- Filter cartridge included with tap
- Boiler included, which is easy to install thanks to its fast-fix, tool free connectors
- Boiler also features a controllable tank temperature range from 75°C-98°C, including holiday and eco mode functions
- Choose from 4 finishes: Chrome, Brushed, Brushed Brass & Matt Black



- CM
- BF
- MB
- BB
- M
- (H)
- (A)

GEO Intense 4-in-1 Tap

GEO4TIDCM/ Chrome
GEO4TIDBF/ Brushed
GEO4TIDMB/ Matt black
GEO4TIDBB/ Brushed brass

Tap height: 428mm
Spout reach: 216mm
Min. pressure: 0.5 bar

Pull Out Taps

5 YEAR WARRANTY

Choose a kitchen tap with pull out function for ultimate food preparation and cleaning results. Thanks to its extendable hose, larger pots and pans which cannot fit easily in standard sinks can be cleaned easily. The majority of our designs feature a retractable hose which sits discreetly within the tap not altering its appearance from a standard tap.



- CM
- BF
- (H)
- (A)

Pro Spray Pull Out Tap

Featuring an open coil design and single lever handle with jet and spray self cancelling sprayhead.

TPR1CM/ Chrome

Tap height: 535mm
Spout reach: 184mm
Hose length: 246mm
Min. pressure: 1.5 bar



- CM
- M
- (H)
- (A)

Aquatrend Spring Pull Out Tap

Sitting tall and proud, the Aquatrend Spring creates a bold statement piece in your kitchen.

TRE1SPRCM/ Chrome

Tap height: 528mm
Spout reach: 188mm
Hose length: 342mm
Min. pressure: 0.5 bar



- CM
- M
- (H)
- (A)

Aquadisc 5 Pull Out Tap

Featuring a modern quad neck design, the Aquadisc 5 subtly hides its additional pull-out function within the spout design.

TAD5POCM/ Chrome

Tap height: 275mm
Spout reach: 218mm
Hose length: 392mm
Min. pressure: 0.75 bar

Filter Taps

Rangemaster's filter taps deliver crystal clear, clean water thanks to the high quality carbon filter included, which reduces impurities and delivers fresh tasting water at the push of a handle. Reduce your plastic usage by investing in a filtered tap at home, each filter cartridge will deliver 2,500 litres of water and can be easily replaced when needed.



- CM
- BF
- A
- (H)
- (A)

Cruciform Filter Tap

A modern alternative with its sweeping swan neck and contemporary handle design.

TSA5CM/ Chrome
TSA5BF/ Brushed

Tap height: 392mm
Spout reach: 216mm
Min. pressure: 0.2 bar



- CM
- BF
- (H)
- (H)
- (A)

Aquatrend Pull Out Tap

Featuring a unique pin handle design and dual lever control function.

TRE1POCM/ Chrome
TRE1POBF/ Brushed

Tap height: 388mm
Spout reach: 220mm
Hose length: 410mm
Min. pressure: 1.5 bar



- CM
- BF
- (H)
- (H)
- (A)

Aquatrend Single Lever Pull Out Tap

Featuring a unique pin handle design and single lever control function.

TRE1SLPOCM/ Chrome
TRE1SLPOBF/ Brushed

Tap height: 390mm
Spout reach: 220mm
Hose length: 410mm
Min. pressure: 1.5 bar

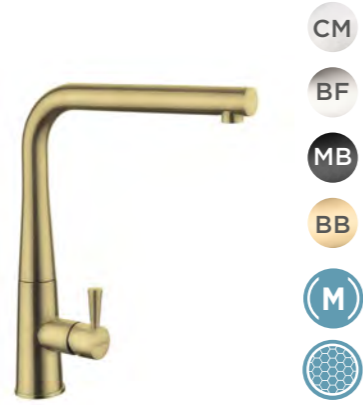
Single Lever Taps

5 YEAR WARRANTY

Operate your tap single-handed while maintaining maximum control over the temperature and flow of the water thanks to the ceramic disc cartridge included, which has been designed to ensure a smooth handle operation is maintained when turned.



- CM
- BF
- MB
- M
- A



- CM
- BF
- MB
- BB
- M
- A



- CM
- BF
- MB
- BB
- A
- M

Quadrant Single Lever Tap

Contemporary design with a modern slim spout and square base design.

TQSL1CM/ Chrome
TQSL1BF/ Brushed
TQSL1MB/ Matt Black

Tap height: 317mm
Spout reach: 219mm
Min. pressure: 0.5 bar

Conical Single Lever Tap

A uniquely shaped body paired with a quad spout design which creates an ultimate modern design piece.

TCOSL1CM/ Chrome
TCOSL1BF/ Brushed
TCOSL1MB/ Matt Black
TCOSL1BB/ Brushed Brass

Tap height: 294mm
Spout reach: 212mm
Min. pressure: 0.6 bar

Aquatrend Single Lever Tap

Aquatrend stands tall to create a focal point in your kitchen, now available in two new additional finishes.

TRE1SLCM/ Chrome
TRE1SLBF/ Brushed
TRE1SLMB/ Matt Black
TRE1SLBB/ Brushed Brass

Tap height: 390mm
Spout reach: 216mm
Min. pressure: 0.4 bar



NEW



- PG
- MB
- BN
- CM
- M
- A

NEW



- AS
- CW
- DG
- M
- A

Hemlock Single Lever Tap

Exquisitely finished, the Hemlock tap range features a delicate knurled handle design paired with a sweeping neck spout design.

THEMSLPG/ Polished Gold
THEMSLMB/ Matt Black
THEMSLBN/ Brushed Nickel
THEMSLKM/ Chrome

Tap height: 412mm
Spout reach: 216mm
Min. pressure: 0.75 bar

Igneous Single Lever Tap

A stylish and practical kitchen tool that combines modern design with superior functionality. Its sleek single-lever handle allows for precise control over water flow and temperature, making it easy to use.

TIGNSLAS/ Ash Black
TIGNSLCW/ Crystal White
TIGNSLDG/ Dove Grey

Tap height: 360mm
Spout reach: 181mm
Min. Pressure: 0.7 bar



- CM
- M
- A

Ellipse Single Lever Tap

Featuring a tall spout with overhead lever, the Ellipse range blends contemporary style with practicality

TEP1CM/ Chrome

Tap height: 277mm
Spout reach: 185mm
Min. Pressure: 0.6 bar



- CM
- A

Aquaflow Single Lever Tap

A compact solution where space may be restricted.

TAF1CM/ Chrome

Tap height: 163mm
Spout reach: 230mm
Min. Pressure: 0.2 bar

Dual Lever Taps

5 YEAR WARRANTY

A dual lever tap gives the user full control of the hot and cold water feeds, with an added benefit of the hot water boiler unit not activating unnecessarily when the cold water is turned, saving energy day-to-day.



Waverley Bridge Tap

Exuding Farmhouse luxe, with its unique handle design featuring intricate contouring detail and its classic spout design, the Waverley kitchen is the perfect accompaniment to a fire-clay kitchen sink.

TWAVBRAB/ Antique Brass
TWAVBREB/ English Bronze
TWAVBRPN/ Polished Nickel

Tap height: 266mm
Spout reach: 228mm
Min. pressure: 0.3 bar



Waverley Dual Lever Tap

The Waverley Dual Lever exudes distinct elegance, featuring a beautifully crafted handle design. A perfect addition to the aesthetics of any classic kitchen.

TWAVDLAB/ Antique Brass
TWAVDLEB/ English Bronze
TWAVDLPN/ Polished Nickel

Tap height: 295mm
Spout reach: 228mm
Min. pressure: 0.4 bar



Aspire Dual Lever Tap

Featuring a modern flat handle and spout design for a sleek, contemporary finished look.

TAI1CM/ Chrome

Tap height: 365mm
Spout reach: 231mm
Min. pressure: 0.4 bar



Quadrant Contemporary Dual Lever Tap

Contemporary design with a modern slim spout and square base design.

TQC1CM/ Chrome
TQC1BF/ Brushed
TQC1MB/ Matt Black

Tap height: 291mm
Spout reach: 219mm
Min. pressure: 0.4 bar



Quadrant Monobloc Dual Lever Tap

Combining a sharp square edged design with a soft curved spout for a subtle, modern look.

TQM1CM/ Chrome

Tap height: 335mm
Spout reach: 200mm
Min. pressure: 0.5 bar



Belfast Traditional Bridge Tap

Classically designed to complement a traditional Farmhouse Belfast sink, available in two colour finishes.

TBL1CM/ Chrome
TBL1BF/ Brushed

Tap height: 368mm
Spout reach: 190mm
Min. pressure: 0.1 bar



Belfast Monobloc Dual Lever Tap

The Belfast Monobloc complements Belfast style sinks perfectly thanks to its compact size and traditional styling.

TBM1AB/ Antique Brass
TBM1CM/ Chrome
TBM1BF/ Brushed

Tap height: 343mm
Spout reach: 193mm
Min. pressure: 0.3 bar



Conical Dual Lever Tap

A uniquely shaped body paired with a square spout design which creates an ultimate modern design piece.

TCO1CM/ Chrome
TCO1BF/ Brushed
TCO1MB/ Matt Black
TCO1BB/ Brushed Brass

Tap height: 294mm
Spout reach: 212mm
Min. pressure: 0.3 bar



Hemlock Dual Lever Tap

A sleek and impressive tap that will stand out in your kitchen. Designed to offer high end style which transforms your traditional kitchen.

THEMDLPG/ Polished Gold
THEMDLMB/ Matt Black
THEMDLBN/ Brushed Nickel
THEMDLKM/ Chrome

Tap height: 405mm
Spout reach: 216mm
Min. pressure: 0.4 bar



Traditional Belfast Bridge Tap

The Traditional Bridge mixer offers a choice of different handle finishes to perfectly complement your Belfast sink.

TBL3AB/WH Antique Brass - white handles
TBL3CM/CM Chrome - chrome handles
TBL3CM/WH Chrome - white handles
TBL3BF/BF Brushed - brushed handles

Tap height: 355mm
Spout reach: 192mm
Min. pressure: 0.3 bar



Cruciform Dual Lever Tap

An elegant design with minimalist styling and softened edges.

TCF2CM/ Chrome
TCF2BF/ Brushed

Tap height: 392mm
Spout reach: 216mm
Min. pressure: 0.3 bar



Aquatrend Dual Lever Tap

A modern favourite, the Aquatrend delivers 'on-trend' styling with superb water output.

TRE1CM/ Chrome
TRE1BF/ Brushed
TRE1MB/ Matt Black
TRE1BB/ Brushed Brass

Tap height: 379mm
Spout reach: 216mm
Min. pressure: 0.3 bar

Dual Lever Taps

5 YEAR WARRANTY

5 YEAR WARRANTY



Parma Dual Lever Tap

A modern, minimalist design with flair – Parma is the perfect accompaniment to any styled kitchen scheme.

TPM1CM/ Chrome
TPM1BF/ Brushed
TPM1BB/ Brushed Brass

Tap height: 389mm
Spout reach: 216mm
Min. pressure: 0.3 bar



Igneous Dual Lever Tap

A stylish and practical kitchen tool that combines modern design with superior functionality. Its sleek single-lever handle allows for precise control over water flow and temperature, making it easy to use.

TIGNDLAS/ Ash Black
TIGNDLCW/ Crystal White
TIGNDLDG/ Dove Grey

Tap height: 367mm
Spout reach: 194mm
Min. Pressure: 0.4 bar



Aquavogue Dual Lever Tap

Designed for the fashionista, Aquavogue is your style icon featuring a striking handle design and tall sweeping spout.

TVO1CM/ Chrome
TVO1BF/ Brushed

Tap height: 398mm
Spout reach: 216mm
Min. pressure: 0.3 bar



Aquaclassic 2 Dual Lever Tap

With the choice of multiple different handle finishes, Aquaclassic 2 can be paired with any ceramic styled sink.

TAC2AB/WH Antique Brass - white handles
TAC2CM/WH Chrome - white handles
TAC2CM/CM Chrome - chrome handles
TAC2BF/BF Brushed - brushed handles

Tap height: 359mm
Spout reach: 190mm
Min. pressure: 0.3 bar



Intense Dual Lever Tap

If striking design is what you seek, the Intense tap delivers this, featuring a tall sweeping neck and available in 5 colours.

TID1CM/ Chrome
TID1BF/ Brushed
TID1BC/ Brushed Copper
TID1MB/ Matt Black
TID1GR/ Graphite

Tap height: 398mm
Spout reach: 216mm
Min. pressure: 0.5 bar



Aquaquad Dual Lever Tap

Modern in design with a quad style neck and tabbed handles, the Aquaquad is available in four finishes.

TAQ2CM/ Chrome
TAQ2BF/ Brushed
TAQ2MB/ Matt Black
TAQ2BB/ Brushed Brass

Tap height: 310mm
Spout reach: 192mm
Min. pressure: 0.4 bar



Estuary Dual Lever Tap

Classically designed featuring a curvature body and tapered handle design, available in four finishes.

TES1CM/ Chrome
TES1BF/ Brushed
TES1BC/ Brushed Copper
TES1BB/ Brushed Brass

Tap height: 361mm
Spout reach: 194mm
Min. pressure: 0.3 bar

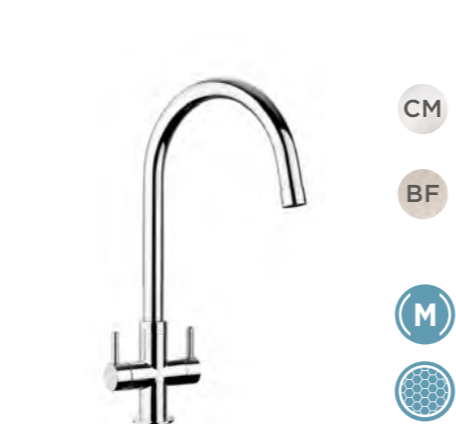


Aquadisc 5 Dual Lever Tap

Featuring easy operable handles and a straight spout design, the Aquadisc 5 is a modern favourite.

TAD5CM/ Chrome finish

Tap height: 277mm
Spout reach: 212mm
Min. pressure: 0.3 bar



Monorise Dual Lever Tap

A popular favourite, Monorise features slim pin handles for a minimalist, subtle finished look.

TMR1CM/ Chrome
TMR1BF/ Brushed

Tap height: 363mm
Spout reach: 194mm
Min. pressure: 0.5 bar



Salorno Dual Lever Tap

Subtly designed to suit any style of kitchen, featuring easy to use paddle handles with a low square neck design.

TSN1CM/ Chrome finish
TSN1BF/ Brushed finish

Tap height: 232mm
Spout reach: 207mm
Min. pressure: 0.4 bar



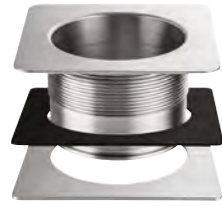
Aquavibe Dual Lever Tap

A classic favourite with pin handle design and short sweeping neck.

TVB1CM/ Chrome finish
TVB1BF/ Brushed finish

Tap height: 287mm
Spout reach: 214mm
Min. pressure: 0.2 bar

Sink accessories



Square Waste Adaptor

To be used with waste disposal units on Arlington handed sinks.

WDUSQAD/



Chopping Board

Bamboo

KA10/



Strainer Basket

Compatible with all sinks
Stainless steel

KA20SS/



Strainer Bowl

Stainless Steel

KA28SS/ (A)
KA09/ (B)

Waste disposal units

Clean, hygienic and safe to use, all Rangemaster waste disposal units are easy to install and compatible with all of our sinks. With a wide choice of different options available all of which include the following features:

- **Bio Shield Antimicrobial Protection** - a hygienic agent which inhibits the growth of a wide range of micro organisms and provides protection against odours.
- **Turntable Operation** - no knives or blades are used thanks to the turntable included which uses generated centrifugal force to hurl waste against the grinding ring which shreds the waste into fine pieces.
- **Torque Master** - a balanced grinding system which provides superior torque speed with less vibration and noise providing a longer life system.
- **Sound Shell** - protected with an outer shell which reduces noise levels when the waste disposal unit is in operation.
- **Continuous Feed Function** - mains operated controlled by a switch.



Economy 500

Suitable for small households.

WDU500/
2 year guarantee



Standard 700

Suitable for small to medium households.

WDU700/
3 year guarantee



Mid Duty 750

Suitable for large households.

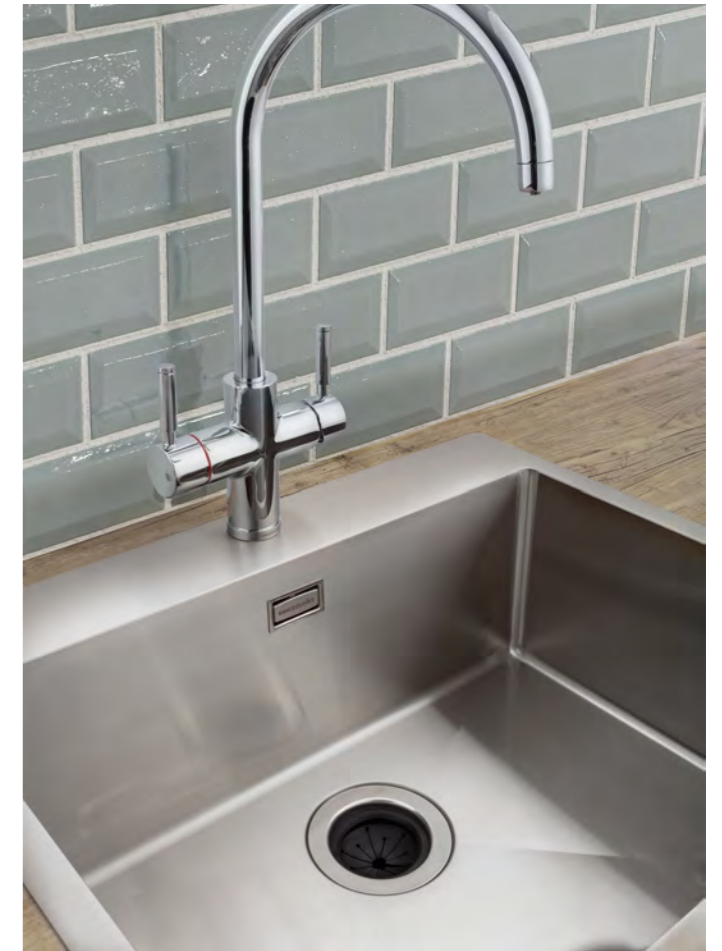
WDU750/
3 year guarantee



Heavy Duty 800

Suitable for large & busy households.

WDU800/
4 year guarantee



	STAINLESS STEEL INSET SINKS								
	Cosmo CSM9601_/	Cosmo CSM9602_/	Arlington AR9851_/	Arlington AR9852_/	Arlington ARL1051	Arlington ARL1052	Boston BST8601_/	Boston BST8602_/	Rockford RK9851_/
Drainer Position	Handed	Handed	Handed	Handed	Reversible	Reversible	Handed	Handed	Handed
No. of Bowls	1	1.5	1	1.5	1	1.5	1	1.5	1
Min. Base Unit (mm)	600	600	600	600	600	600	600	600	600
Overall Length (mm)	960	960	985	985	1000	1000	860	860	985
Overall Width (mm)	500	500	508	508	500	500	520	520	508
Cutout Size Length (mm)	940	940	965	965	980	980	840	840	965
Cutout Size Width (mm)	480	480	488	488	480	480	500	500	488
Main Bowl Length (mm)	460	350	450	340	450	340	500	340	340
Main Bowl Width (mm)	400	400	420	420	400	400	400	400	420
Main Bowl Depth (mm)	210	200	190	190	215	210	210	205	190
Second Bowl Length (mm)	-	180	-	160	-	170	-	180	-
Second Bowl Width (mm)	-	400	-	350	-	300	-	400	-
Second Bowl Depth (mm)	-	140	-	130	-	150	-	205	-
Material	18/10 SS	18/10 SS	18/10 SS	18/10 SS	18/10 SS	18/10 SS	18/10 SS	18/10 SS	18/10 SS
Gauge (mm)	1.0	1.0	0.9	0.9	0.9	0.9	1.0	1.0	0.9
Finish Drainer	Micro-Sheen	Micro-Sheen	Micro-Sheen	Micro-Sheen	Micro-Sheen	Micro-Sheen	Micro-Sheen	Micro-Sheen	Micro-Sheen
Finish Bowl	Micro-Sheen	Micro-Sheen	Micro-Sheen	Micro-Sheen	Micro-Sheen	Micro-Sheen	Micro-Sheen	Micro-Sheen	Micro-Sheen
Waste Size Ø (mm)	1 x 90	2 x 90	1 x 90 square	2 x 90 square	1 x 90	2 x 90	1 x 90	2 x 90	1 x 89
Waste Kit	Included	Included	Included	Included	Included	Included	Included	Included	Included
Tap Hole Size Ø (mm)	1 x 35	1 x 35	1 x 35	1 x 35	1 x 35	1 x 35	1 x 35	1 x 35	1 x 35
Min. Worktop Thickness (mm)	5	5	28	28	20	20	20	20	28
Max. Worktop Thickness (mm)	40	40	40	40	35	35	35	35	40
Guarantee (years)	25	25	25	25	25	25	25	25	25

	Rockford RK9852_/	Iconica ICN9501/	Iconica ICN9502/	Oakland OL9851_/	Oakland OL9852_/	Oakland OAK1051/	Oakland OAK1052/	Manhattan MN10101_/	Manhattan MN10102_/	Sedona SD9851/	Sedona SD9852/	Houston HS9851/
Drainer Position	Handed	Reversible	Reversible	Handed	Handed	Reversible	Reversible	Handed	Handed	Reversible	Reversible	Reversible
No. of Bowls	1.5	1	1.5	1	1.5	1	1.5	1	1.5	1	1.5	1
Min. Base Unit (mm)	600	600	600	600	600	600	600	500	600	600	600	600
Overall Length (mm)	985	950	950	985	985	1000	1000	1010	1010	985	985	985
Overall Width (mm)	508	508	508	508	508	500	500	515	515	508	508	508
Cutout Size Length (mm)	965	930	930	965	965	980	980	990	990	965	965	965
Cutout Size Width (mm)	488	488	488	488	488	480	480	495	495	488	488	488
Main Bowl Length (mm)	340	400	340	450	360	450	340	400	350	400	350	400
Main Bowl Width (mm)	420	400	400	420	424	400	400	420	420	420	420	420
Main Bowl Depth (mm)	190	205	200	190	170	210	205	190	190	190	190	190
Second Bowl Length (mm)	160	-	170	-	156	-	170	-	156	-	156	-
Second Bowl Width (mm)	350	-	300	-	342	-	300	-	342	-	342	-
Second Bowl Depth (mm)	130	-	130	-	120	-	135	-	120	-	120	-
Material	18/10 SS	18/10 SS	18/10 SS	18/10 SS	18/10 SS	18/10 SS	18/10 SS	18/10 SS	18/10 SS	18/10 SS	18/10 SS	18/10 SS
Gauge (mm)	0.9	0.9	0.9	0.9	0.9	0.9	0.9	0.9	0.9	0.9	0.9	0.9
Finish Drainer	Micro-Sheen	Micro-Sheen	Micro-Sheen	Micro-Sheen	Micro-Sheen	Micro-Sheen	Micro-Sheen	Micro-Sheen	Micro-Sheen	Micro-Sheen	Micro-Sheen	Micro-Sheen
Finish Bowl	Micro-Sheen	Micro-Sheen	Micro-Sheen	Micro-Sheen	Micro-Sheen	Micro-Sheen	Micro-Sheen	Micro-Sheen	Micro-Sheen	Micro-Sheen	Micro-Sheen	Micro-Sheen
Waste Size Ø (mm)	2 x 89	1 x 90	2 x 90	1 x 89	2 x 89	1 x 90	2 x 90	1 x 89	2 x 89	1 x 89	2 x 89	1 x 89
Waste Kit	Included	Included	Included	Included	Included	Included	Included	Included	Included	Included	Included	Included
Tap Hole Size Ø (mm)	1 x 35	1 x 35	1 x 35	1 x 35	1 x 35	1 x 35	1 x 35	1 x 35	1 x 35	1 x 35	1 x 35	1 x 35
Min. Worktop Thickness (mm)	28	20	20	28	28	20	20	28	28	28	28	28
Max. Worktop Thickness (mm)	40	35	35	40	40	35	35	40	40	40	40	40
Guarantee (years)	25	25	25	25	25	25	25	25	25	25	25	25

	Houston HS9852/	Michigan MG8001/	Michigan MG9501/	Michigan MG9502/	Glendale GL9501/	Glendale GL9502/	Baltimore BL8001/	Baltimore BL9501/	Baltimore BL9502/	Cosmo CSM60/
Drainer Position	Reversible	Reversible	Reversible	Reversible	Reversible	Reversible	Reversible	Reversible	Reversible	-
No. of Bowls	1.5	1	1	1.5	1	1.5	1	1	1.5	1
Min. Base Unit (mm)	600	500	500	600	500	600	450	600	600	600
Overall Length (mm)	985	800	950	950	950	950	800	950	950	600
Overall Width (mm)	508	508	508	508	508	508	508	508	508	515
Cutout Size Length (mm)	965	780	930	930	930	930	780	930	930	580
Cutout Size Width (mm)	488	488	488	488	488	488	488	488	488	495
Main Bowl Length (mm)	350	360	360	360	360	360	340	420	340	550
Main Bowl Width (mm)	420	424	424	424	424	424	424	400	410	400
Main Bowl Depth (mm)	190	155	155	155	155	155	150	160	160	200
Second Bowl Length (mm)	156	-	-	156	-	156	-	-	175	-
Second Bowl Width (mm)	342	-	-	300	-	342	-	-	320	-
Second Bowl Depth (mm)	120	-	-	120	-	120	-	-	80	-
Material	18/10 SS	18/10 SS	18/10 SS	18/10 SS	18/10 SS	18/10 SS	18/10 SS	18/10 SS	18/10 SS	18/10 SS
Gauge (mm)	0.9	0.7	0.7	0.7	0.7	0.7	0.7	0.7	0.8	1.0
Finish Drainer	Micro-Sheen	Micro-Sheen	Micro-Sheen	Micro-Sheen	Micro-Sheen	Micro-Sheen	Micro-Sheen	Micro-Sheen	Micro-Sheen	-
Finish Bowl	Micro-Sheen	Micro-Sheen	Micro-Sheen	Micro-Sheen	Micro-Sheen	Micro-Sheen	Micro-Sheen	Micro-Sheen	Micro-Sheen	Micro-Sheen
Waste Size Ø (mm)	2 x 89	1 x 89	1 x 89	2 x 89	1 x 89	2 x 89	1 x 89	1 x 89	2 x 89	1 x 89
Waste Kit	Included	Included	Included	Included	Included	Included	Included	Included	Included	Included
Tap Hole Size Ø (mm)	1 x 35	1 x 35	1 x 35	1 x 35	1 x 35	1 x 35	1 x 35	1 x 35	1 x 35	1 x 35
Min. Worktop Thickness (mm)	28	28	28	28	28	28	28	28	28	25
Max. Worktop Thickness (mm)	40	40	40	40	40	40	40	40	40	45
Guarantee (years)	25	25	25	25	25	25	25	25	25	25

	Spectra SPE50_/	Spectra SPE3416_/	Kube KUB18/	Kube KUB34/	Kube KUB40/	Kube KUB50/	Kube KUB70/	Kube KUB3418_/	Kube KUB5018_/	Kube KUB4040/	Cubix CBX32/
Drainer Position	-	Handed	-	-	-	-	-	Handed	Handed	-	-
No. of Bowls	1	1.5	1	1	1	1	1	1.5	1.5	2	1
Min. Base Unit (mm)	600	600	300	400	500	600	800	600	800	900	400
Overall Length (mm)	540	555	210	370	430	530	730	580	740	860	360
Overall Width (mm)	440	440	430	430	430	430	430	430	430	430	440
Cutout Size Length (mm)	-	-	-	-	-	-	-	-	-	-	*
Cutout Size Width (mm)	-	-	-	-	-	-	-	-	-	-	*
Main Bowl Length (mm)	500	340	180	340	400	500	700	340	500	400	320
Main Bowl Width (mm)	400	400	400	400	400	400	400	400	400	400	400
Main Bowl Depth (mm)	200	200	140	200	200	200	200	200	200	200	200
Second Bowl Length (mm)	-	160	-	-	-	-	-	180	180	400	-
Second Bowl Width (mm)	-	400	-	-	-	-	-	400	400	400	-
Second Bowl Depth (mm)	-	140	-	-	-	-	-	140	140	200	-
Material	18/10 SS	18/10 SS	18/10 SS	18/10 SS	18/10 SS	18/10 SS	18/10 SS	18/10 SS	18/10 SS	18/10 SS	18/10 SS
Gauge (mm)	1.0	1.0	1.0	1.0	1.0	1.0	1.2	1.0	1.0	1.0	1.0
Finish Drainer	-	-	-	-	-	-	-	-	-	-	-
Finish Bowl	PVD	PVD	Micro-Sheen	Micro-Sheen	Micro-Sheen	Micro-Sheen	Micro-Sheen	Micro-Sheen	Micro-Sheen	Micro-Sheen	Micro-Sheen
Waste Size Ø (mm)	1 x 89	2 x 89	1 x 90 square	1 x 90 square	1 x 90 square	1 x 90 square	1 x 90 square	2 x 90 square	2 x 90 square	2 x 90 square	1 x 90
Waste Kit	Included	Included	Included	Included	Included	Included	Included	Included	Included	Included	Included
Tap Hole Size Ø (mm)	-	-	-	-	-	-	-	-	-	-	-
Min. Worktop Thickness (mm)	5	5	5	5	5	5	5	5	5	5	5
Max. Worktop Thickness (mm)	45	45	45	45	45	45	45	45	45	45	45
Guarantee (years)	25	25	25	25	25	25	25	25	25	25	25

NB. Spectra bowls can be installed as inset or undermount, please visit www.rangemastersinks.co.uk for cut out dimensions

	Cubix CBX42/	Cubix CBX50/	Cubix CBX70/	Cubix CBX3218_/	Quad QUAD16/	Quad QUAD34/	Quad QUAD48/	Quad QUAD3416_/	Quad QUAD3418_/
Drainer Position	-	-	-	Handed	-	-	-	Handed	Handed or Reversible
No. of Bowls	1	1	1	1.5	1	1	1	1.5	1.5
Min. Base Unit (mm)	500	600	800	600	300	400	600	600	600
Overall Length (mm)	460	540	740	560	200	390	530	580	600
Overall Width (mm)	440	440	440	440	340	450	450	450	450
Cutout Size Length (mm)	*	*	*	*	-	-	-	-	-
Cutout Size Width (mm)	*	*	*	*	-	-	-	-	-
Main Bowl Length (mm)	420	500	700	320	160	340	480	340	340
Main Bowl Width (mm)	400	400	400	400	300	400	400	400	400
Main Bowl Depth (mm)	200	200	200	200	120	190	200	190	190
Second Bowl Length (mm)	-	-	-	180	-	-	-	160	180
Second Bowl Width (mm)	-	-	-	400	-	-	-	300	400
Second Bowl Depth (mm)	-	-	-	140	-	-	-	120	120
Material	18/10 SS	18/10 SS	18/10 SS	18/10 SS	18/10 SS	18/10 SS	18/10 SS	18/10 SS	18/10 SS
Gauge (mm)	1.0	1.0	1.0	1.0	0.9	0.9	0.9	0.9	0.9
Finish Drainer	-	-	-	-	-	-	-	-	-
Finish Bowl	Micro-Sheen	Micro-Sheen	Micro-Sheen	Micro-Sheen	Micro-Sheen	Micro-Sheen	Micro-Sheen	Micro-Sheen	Micro-Sheen
Waste Size Ø (mm)	1 x 90	1 x 90	1 x 90	2 x 90	1 x 90	1 x 90	1 x 90	1 x 90	1 x 90
Waste Kit	Included	Included	Included	Included	Included	Included	Included	Included	Included
Tap Hole Size Ø (mm)	-	-	-	-	-	-	-	-	-
Min. Worktop Thickness (mm)	5	5	5	5	5	5	5	5	5
Max. Worktop Thickness (mm)	45	45	45	45	45	45	45	45	45
Guarantee (years)	25	25	25	25	25	25	25	25	25

Quad QUAD3434/	Classic UB15/	Classic UB35/	Classic UB40/	Classic UB45/	Classic UB3515_/	Classic UB4015_/	Classic UB3535/	Classic UB4040/
-	-	-	-	-	Reversible or Handed	Handed	-	-
2	1	1	1	1	1.5	1.5	2	2
800	300	400	500	600	600	800	800	1000
760	185	378	460	490	597	671	787	945
450	370	448	440	460	472	460	472	460
-	-	-	-	-	-	-	-	-
-	-	-	-	-	-	-	-	-
340	156	350	420	450	350	420	350	420
400	342	420	400	420	420	400	420	400
190	120	190	190	190	190	190	190	190
340	-	-	-	-	156	156	350	420
400	-	-	-	-	342	342	420	400
190	-	-	-	-	120	120	190	190
18/10 SS	18/10 SS	18/10 SS	18/10 SS	18/10 SS	18/10 SS	18/10 SS	18/10 SS	18/10 SS
0.9	0.8	0.8	0.9	0.9	0.9	0.9	0.9	0.9
-	-	-	-	-	-	-	-	-
Micro-Sheen	Micro-Sheen	Micro-Sheen	Micro-Sheen	Micro-Sheen	Micro-Sheen	Micro-Sheen	Micro-Sheen	Micro-Sheen
1 x 90	1 x 89	1 x 89	1 x 89	1 x 89	2 x 89	2 x 89	2 x 89	2 x 89
Included	Included	Included	Included	Included	Included	Included	Included	Included
-	-	-	-	-	-	-	-	-
5	-	-	-	-	-	-	-	-
45	-	-	-	-	-	-	-	-
25	25	25	25	25	25	25	25	25

GRANITE INSET SINKS	Prato PRA570_/_/	Prato PRA790_/_/	Topaz TOPI001_/_/	Topaz TOPI002_/_/	Topaz TOP860_/_/	Mayon MAY1051_/_/	Mayon MAY1052_/_/	Mayon MAY690_/_/	Amethyst AME1051_/_/	
	-	-	Reversible	Reversible	Reversible	Reversible	Reversible	Reversible	Reversible	Reversible
	1	1	1	1.5	1	1	1.5	1	1	
	600	800	600	600	450	600	600	450	600	
	570	790	1000	1000	860	1000	1000	690	1000	
	510	510	510	510	510	510	510	510	500	
	550	770	980	980	840	980	980	670	980	
	480	480	480	480	480	490	490	490	480	
	506	726	478	319	330	500	334	365	482	
	386	386	421	421	421	446	446	448	422	
	200	200	200	200	200	195	195	195	220	
-	-	-	150	-	-	167	-	-		
-	-	-	421	-	-	296	-	-		
-	-	-	140	-	-	120	-	-		
Igneous Granite	Igneous Granite	Igneous Granite	Igneous Granite	Igneous Granite	Igneous Granite	Igneous Granite	Igneous Granite	Igneous Granite	Igneous Granite	
-	-	-	-	-	-	-	-	-		
-	-	-	-	-	-	-	-	-		
-	-	-	-	-	-	-	-	-		
1 x 90	1 x 90	1 x 90	2 x 90	1 x 90	1 x 90	2 x 90	1 x 90	1 x 90		
Included	Included	Included	Included	Included	Included	Included	Included	Included		
-	-	-	-	-	-	-	-	-		
10	10	10	10	10	30	30	30	30		
45	45	45	45	45	40	40	40	40		
25	25	25	25	25	25	25	25	25		

Amethyst AME1052_/_/	Amethyst AME860_/_/	Elements ELE1051_/_/	Elements ELE1052_/_/	Andesite AND860_/_/	Andesite AND1051_/_/	Andesite AND1052_/_/	Loa LOA1051_/_/	Loa LOA1052_/_/	Loa LOA1152_/_/	Loa LOA860_/_/	Oridian ORI570_/_/
Reversible	Reversible	Reversible	Reversible	Reversible	Reversible	Reversible	Reversible	Reversible	Reversible	Reversible	-
1.5	1	1	1.5	1	1	1.5	1	1.5	2	1	1
600	450	600	600	450	600	600	600	600	800	450	600
1000	860	1000	1000	860	1000	1000	1000	1000	1160	860	570
500	500	500	500	500	500	500	500	500	500	500	500
980	840	980	980	840	980	980	980	980	1140	840	550
480	480	480	480	480	480	480	480	480	480	480	480
341	348	480	380	347	480	345	480	360	338	330	500
422	422	420	420	430	430	430	435	434	435	435	400
204	204	180	180	200	200	200	180	180	180	180	200
162	-	-	125	-	-	155	-	145	338	-	-
301	-	-	282	-	-	340	-	300	435	-	-
148	-	-	120	-	-	146	-	128	180	-	-
Igneous Granite	Igneous Granite	Igneous Granite	Igneous Granite	Igneous Granite	Igneous Granite	Igneous Granite	Igneous Granite	Igneous Granite	Igneous Granite	Igneous Granite	Granite
-	-	-	-	-	-	-	-	-	-	-	-
-	-	-	-	-	-	-	-	-	-	-	-
-	-	-	-	-	-	-	-	-	-	-	-
2 x 90	1 x 90	1 x 90	2 x 90	1 x 90	1 x 90	2 x 90	1 x 90	2 x 90	2 x 90	1 x 90	1 x 90
Included	Included	Included	Included	Included	Included	Included	Included	Included	Included	Included	Included
-	-	-	-	-	-	-	-	-	-	-	-
30	30	30	30	30	30	30	10	10	10	10	25
40	40	40	40	40	40	40	45	45	45	45	45
25	25	25	25	25	25	25	25	25	25	25	25

	Oridian ORI7901_/_/	Oridian ORI5902_/_/	Oridian ORI7902_/_/		Oridian ORIUN540_/_/	Oridian ORIUN5602_/_/	Oridian ORIUN7601_/_/	Oridian ORIUN7602_/_/	Paragon PAR4553_/_/	Paragon PAR3115_/_/
Drainer Position	-	Left Hand	-	GRANITE UNDERMOUNT SINKS	-	Left Hand	-	-	-	Right Hand
No. of Bowls	1.5	1	2		1	1½	1	2	1	1½
Min. Base Unit (mm)	600	800	800		600	600	800	800	600	600
Overall Length (mm)	590	790	790		540	560	760	760	533	550
Overall Width (mm)	500	500	500		440	440	440	435	457	430
Cutout Size Length (mm)	570	770	770		500	520	720	720	488	490
Cutout Size Width (mm)	480	480	480		400	400	400	395	410	370
Main Bowl Length (mm)	325	720	343		500	325	720	343	469	310
Main Bowl Width (mm)	400	400	395		400	400	400	395	393	370
Main Bowl Depth (mm)	200	200	210		200	200	200	220	209	200
Second Bowl Length (mm)	160	-	343		-	160	-	343	-	152
Second Bowl Width (mm)	400	-	395		-	400	-	395	-	370
Second Bowl Depth (mm)	155	-	210		-	155	-	220	-	130
Material	Granite	Granite	Granite		Igneous Granite	Igneous Granite	Igneous Granite	Igneous Granite	Igneous Granite	Igneous Granite
Gauge (mm)	-	-	-		-	-	-	-	-	-
Finish Drainer	-	-	-		-	-	-	-	-	-
Finish Bowl	-	-	-		-	-	-	-	-	-
Waste Size Ø (mm)	2 x 90	1 x 90	2 x 90		1 x 90	2 x 90	1 x 90	2 x 90	1 x 92	2 x 90
Waste Kit	Included	Included	Included	Included	Included	Included	Included	Included	Included	
Tap Hole Size Ø (mm)	-	-	-	-	-	-	-	-	-	
Min. Worktop Thickness (mm)	25	25	25	30	30	30	30	30	30	
Max. Worktop Thickness (mm)	45	45	45	40	40	40	40	40	40	
Guarantee (years)	25	25	25	25	25	25	25	25	25	

Paragon PAR3641_/_/
-
2
900
824
481
776
433
362
395
241
362
395
241
Igneous Granite
-
-
-
2 x 92
Included
-
30
40
25



	Arlington CARI051WH	Arlington CARI052WH	Austell CAUI0101_/_/	Austell CAUI0102_/_/	Rustic CRT10101WH/	Rustic CRT10202WH/	Tenby CTE8501WH/	Tenby CTE10102WH/
Drainer Position	Reversible	Reversible	Reversible	Reversible	Reversible	Reversible	Reversible	Reversible
No. of Bowls	1	1½	1	1½	1	1½	1	1½
Min. Base Unit (mm)	600	600	600	600	600	600	500	600
Overall Length (mm)	985	985	1000	1000	1000	1000	850	997
Overall Width (mm)	500	500	500	500	500	500	500	497
Cutout Size Length (mm)	965	965	970	970	980	980	810	950
Cutout Size Width (mm)	480	480	470	470	480	480	460	460
Main Bowl Length (mm)	424	334	449	340	460	360	340	330
Main Bowl Width (mm)	374	375	415	415	390	390	370	370
Main Bowl Depth (mm)	193	195	190	190	195	195	200	215
Second Bowl Length (mm)	-	172	-	170	-	147	-	135
Second Bowl Width (mm)	-	260	-	300	-	260	-	253
Second Bowl Depth (mm)	-	145	-	142	-	120	-	128
Material	Fire-clay	Fire-clay	Fire-clay	Fire-clay	Fire-clay	Fire-clay	Fire-clay	Fire-clay
Gauge (mm)	-	-	-	-	-	-	-	-
Finish Drainer	-	-	-	-	-	-	-	-
Finish Bowl	-	-	-	-	-	-	-	-
Waste Size Ø (mm)	1 x 90	2 x 90	1 x 90	2 x 90	1 x 89	1 x 90, 1 x 60	1 x 90	1 x 90, 1 x 60
Waste Kit	Included	Included	Included	Included	Included	Included	Included	Included
Tap Hole Size Ø (mm)	-	-	-	-	-	-	-	-
Min. Worktop Thickness (mm)	-	-	-	-	-	-	-	-
Max. Worktop Thickness (mm)	-	-	-	-	-	-	-	-
Guarantee (years)	10	10	10	10	10	10	10	10

	Hartland CHA622WH/	Rustique CRUB1740WH/	Rustique CRUB385WH/	Rustique CRUB4040WH/	Rustique CRUB4936WH/	Rustique CRUB5340WH/	Rustique CRUB3315WH/	Rustique CRUB3314WH/	Rustique CRUB3216WH/
Drainer Position	-	-	-	-	-	-	Right Hand	Right Hand	Right Hand
No. of Bowls	1	1	1	1	1	1	1.5	1.3	1.5
Min. Base Unit (mm)	600	300	500	500	600	600 inset 650 u/mount	600	600 inset 650 u/mount	600 inset 650 u/mount
Overall Length (mm)	622	234	445 Ø	462	557	598	557	600	595
Overall Width (mm)	494	460	445 Ø	462	430	462	430	522	460
Overall Height (mm)	170	-	-	-	-	-	-	-	-
Cutout Size Length (mm)	-	-	-	-	-	-	490/530	-	-
Cutout Size Width (mm)	-	-	-	-	-	-	365/405	-	-
Main Bowl Length (mm)	540	174	385 Ø	400	494	536	330	360	337
Main Bowl Width (mm)	401	400	385 Ø	400	367	401	367	460	400
Main Bowl Depth (mm)	186	195	174	195	194	195	189	195	196
Second Bowl Length (mm)	-	-	-	-	-	-	146	162	183
Second Bowl Width (mm)	-	-	-	-	-	-	367	300	400
Second Bowl Depth (mm)	-	-	-	-	-	-	189	175	176
Material	Fire-clay	Fire-clay	Fire-clay	Fire-clay	Fire-clay	Fire-clay	Fire-clay	Fire-clay	Fire-clay
Gauge (mm)	-	-	-	-	-	-	-	-	-
Finish Drainer	-	-	-	-	-	-	-	-	-
Finish Bowl	-	-	-	-	-	-	-	-	-
Waste Size Ø (mm)	1 x 89	1 x 90	1 x 89	1 x 90	1 x 90	1 x 89	2 x 90	2 x 90	2 x 90
Waste Kit	Included	Included	Included	Included	Included	Included	Included	Included	Included
Tap Hole Size Ø (mm)	1 x 35	-	-	-	-	-	-	-	-
Min. Worktop Thickness (mm)	20	12	12	12	12	12	12	12	12
Max. Worktop Thickness (mm)	40	40	40	40	40	40	40	40	40
Guarantee (years)	10	10	10	10	10	10	10	10	10

FIRE-CLAY CERAMIC BELFAST AND UNDERMOUNT INSET SINKS

	Rustique CRUB4329WH/	Farmhouse Belfast CFBL595_/	Farmhouse CFBL795WH/	Farmhouse Belfast CFBL800WH/	Farmhouse Belfast CFBL900WH/	Classic Belfast CCBL595WH/	Classic Belfast CDB800WH/	Grange Belfast CGR595_/	Sandwood SAN5963WH/	Belfast CBL595WH/
Right-hand	-	-	-	-	-	-	-	-	-	-
2	1	1	2	2	1	2	1	1	1	1
900	600	800	800	900	600	800	600	600	600	600
796	595	795	793	895	595	800	595	597	595	595
462	455	460	491	460	455	500	455	630	475	475
-	252	220	220	220	250	220	250	220	220	220
-	-	-	-	-	-	-	-	-	-	-
-	-	-	-	-	-	-	-	-	-	-
431	535	735	366	417	525	365	555	531	550	550
401	395	400	450	420	385	450	415	441	420	420
196	222	197	195	194	215	200	227	191	200	200
286	-	-	366	417	-	365	-	-	-	-
401	-	-	450	420	-	450	-	-	-	-
196	-	-	195	194	-	200	-	-	-	-
Fireclay Ceramic	Fire-clay	Fireclay Ceramic	Fire-clay	Fire-clay	Fire-clay	Fire-clay	Fire-clay	Fireclay Ceramic	Fire-clay	Fire-clay
-	-	-	-	-	-	-	-	-	-	-
-	-	-	-	-	-	-	-	-	-	-
-	-	-	-	-	-	-	-	-	-	-
2 x 90	1 x 60	1 x 90	2 x 89	2 x 90	1 x 65	2 x 90	1 x 60	1 x 90	1 x 90	1 x 90
Included	Included	Included	Included	Included	Please order WKIT13/	Please order WKIT24/	Included	Included	Please order WKIT15/	Included
-	-	-	-	-	-	-	-	-	-	-
12	-	-	-	-	-	-	-	-	-	-
40	-	-	-	-	-	-	-	-	-	-
10	10	10	10	10	10	10	10	10	10	10

NB. Rustique bowls can be installed as inset or undermount, please visit www.rangemastersinks.co.uk for cut out dimensions

	Geo Intense GEO4TID_/	Cruciform TSA5_/	Pro Spray TPRICM/	Aquatrend Spring TREISPRCM/
Min. Pressure (bar)	0.5	0.2	1.5	0.5
Max. Pressure (bar)	5.5	5.5	5.5	5.5
Overall Tap Height (mm)	428	392	535	528
Spout Exit Reach (mm)	216	216	184	188
Spout Exit Height (mm)	300	265	225	200
Guarantee (years)	5	5	5	5

4-IN-1 HOT WATER TAPS

FILTER TAPS

PULL OUT TAPS

Aquadisc 5 Pull Out TAD5POCM/	Aquatrend TREIPO_/	Aquatrend SL TREISLPO_/	Hemlock Dual Lever THEMDL_/	Hemlock Single Lever THEMSL_/	Igneous Dual Lever TIGNDL_/	Igneous Single Lever TIGNSL_/	Waverley Bridge TWAVBR_/	Waverley Dual Lever TWAVDL_/	Aquaclassic 2 TAC2_/	Aquadisc 5 TAD5_/
0.75	1.5	1.5	0.4	0.7	0.4	0.7	0.3	0.4	0.3	0.3
5.5	5.5	5.5	5	5	5	5	5	5	5.5	5.5
275	388	390	405	412	367	360	272	295	359	277
218	220	220	216	216	194	181	228	228	190	212
244	203	205	280	287	237	261	202	226	229	247
5	5	5	5	5	5	5	5	5	5	5

TAPS

	Aquatrend TRE1_/	Aquatrend Single Lever TREISL_/	Aquavibe TVB1_/	Aquavogue TVO1_/	Aspire TAI1_/	Belfast Monobloc TBM1_/	Belfast Traditional TBL1_/	Conical TCO1_/	Conical Single Lever TCOSSL1_/	Cruciform TCF2_/
Min. Pressure (bar)	0.3	0.4	0.2	0.3	0.4	0.3	0.1	0.3	0.6	0.3
Max. Pressure (bar)	5.5	5.5	5.5	5.5	5.5	5.5	5.5	5.5	5.5	5.5
Overall Tap Height (mm)	379	390	287	398	365	343	368	294	294	392
Spout Exit Reach (mm)	216	216	214	216	231	193	190	212	212	216
Spout Exit Height (mm)	253	264	247	272	230	232	260	264	264	265
Guarantee (years)	5	5	5	5	5	5	5	5	5	5

Estuary TES1_/	Intense TID1_/	Monorise TMR1_/	Parma TPM1_/	Quadrant Dual Lever TQC1_/	Quadrant Monobloc TQM1_/	Quadrant Single Lever TQS1_/	Salorno TSN1_/	Trad. Bridge TBL3_/	Aquaquad TAQ2_/
0.3	0.5	0.5	0.3	0.4	0.5	0.5	0.4	0.3	0.4
5.5	5.5	5.5	5.5	5.5	5.5	5.5	5.5	5.5	5.5
361	398	363	389	291	335	317	232	355	310
194	216	194	216	219	200	219	207	192	192
230	273	233	263	271	230	297	203	243	237
5	5	5	5	5	5	5	5	5	5



RANGEMASTER™
SINKS & TAPS

Providing solutions for
every installation

For more information about our sinks and taps visit
www.rangemaster.co.uk

Trade Enquiries

+44 (0)115 946 4000
tradesales@agarangemaster.co.uk

Meadow Lane, Long Eaton, Nottingham,
NG10 2GD, England

Consumer Enquiries

01926 457628
consumers@agarangemaster.co.uk

rangemastersinks.co.uk

D007989

October 24