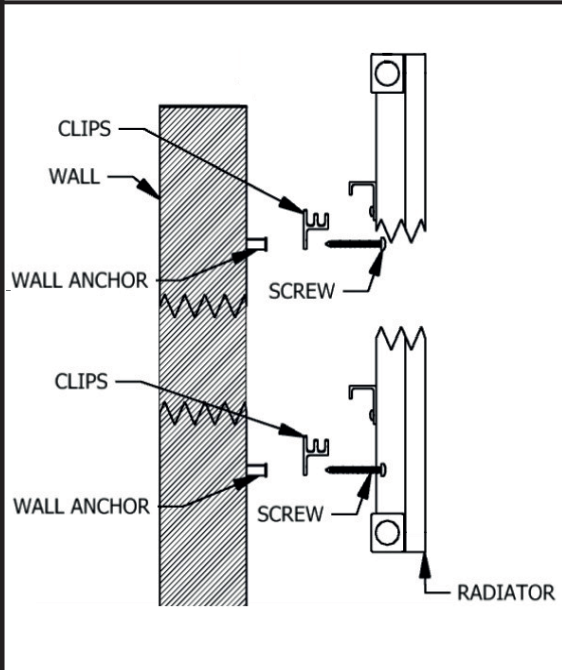
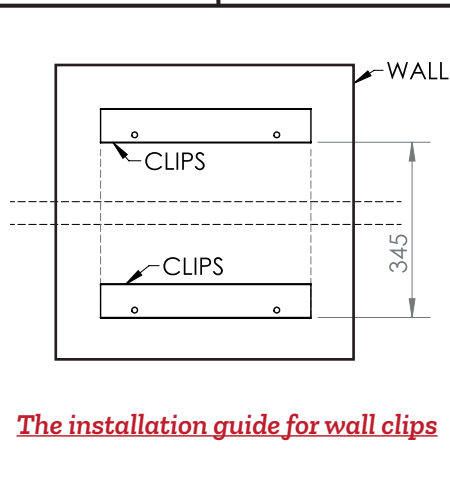
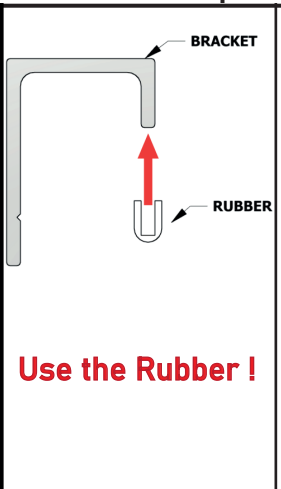
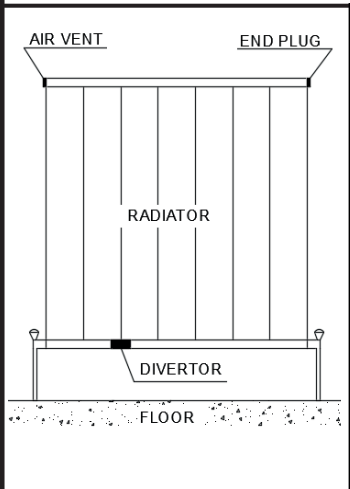
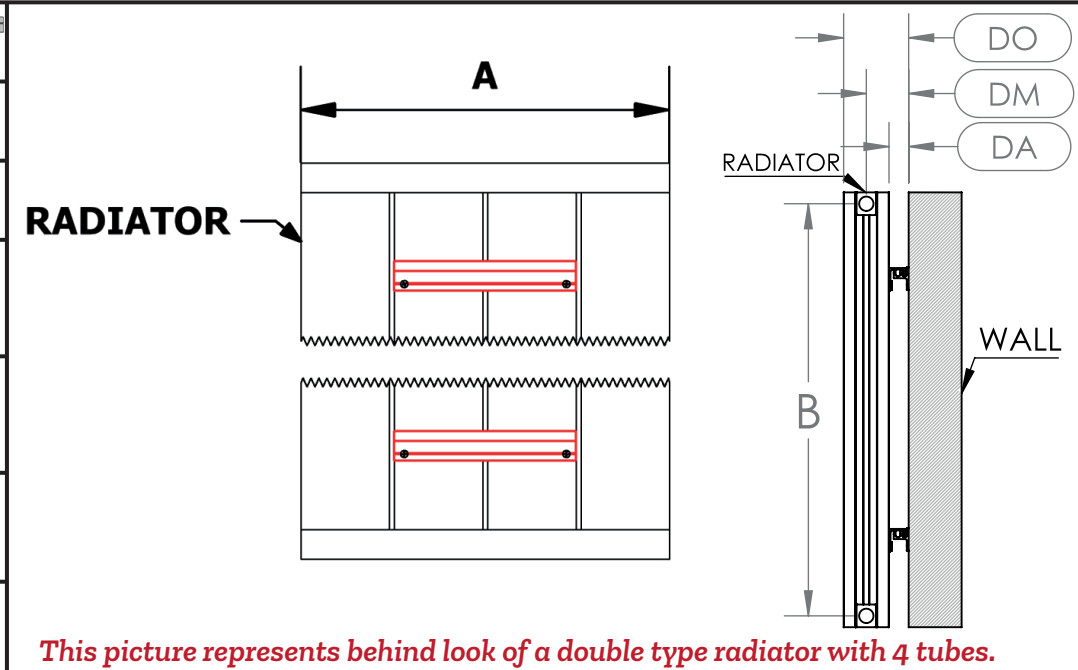


VICARI (for 4 and 6 tubes) INSTALLATION GUIDE

This product must be fitted only by a fully qualified installer.



CLIPS 2 PCS	
WALL ANCHORS 4 PCS	
FIXING SCREWS 4 PCS	
CAP 2 PCS	
END PLUG 1 PCS	
AIR VENT 1 PCS	
RUBBER 2 PCS	



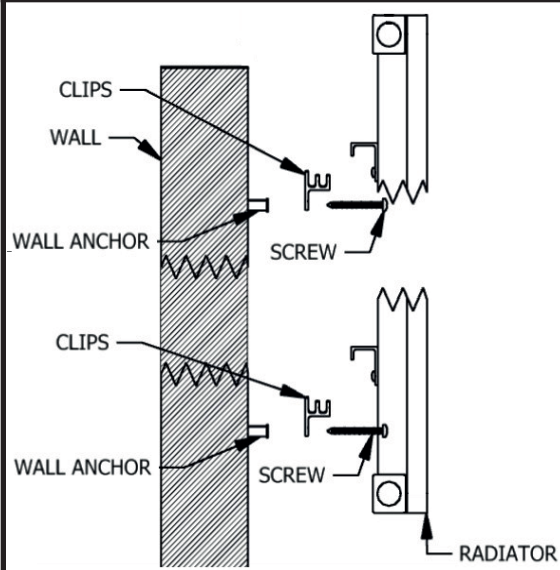
NAMES		A	B	TUBE QTY	DA	DM	DO
VICARI (SINGLE)	600	400	545	4	22	35	66
VICARI (SINGLE)	600	600	545	6	22	35	66
VICARI (DOUBLE)	600	400	545	4	26	57	88
VICARI (DOUBLE)	600	600	545	6	26	57	88

GENERAL RECOMMENDATION

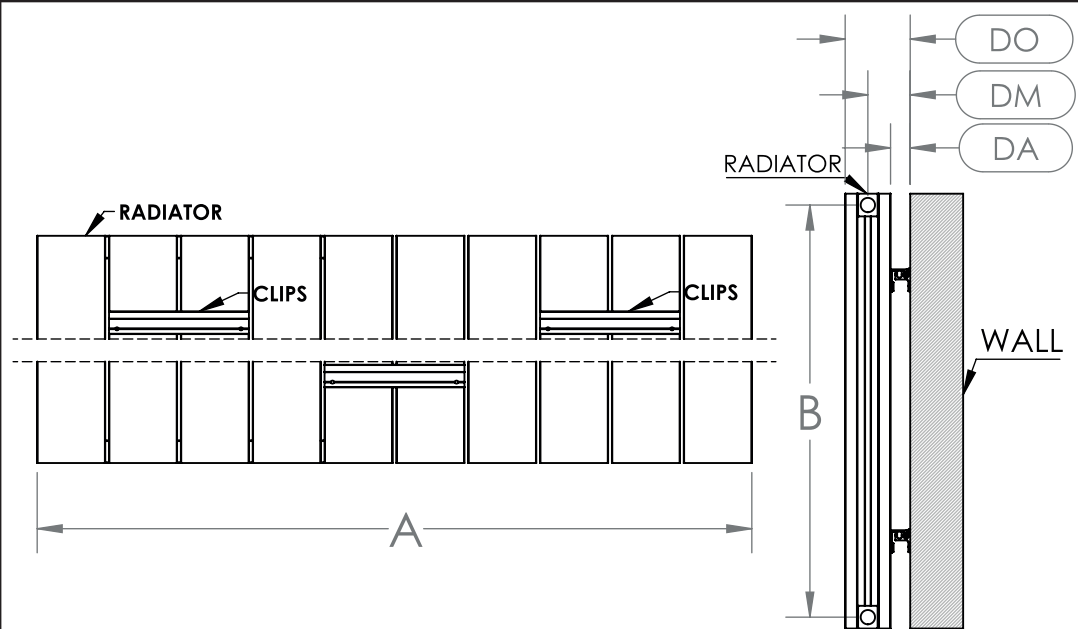
- Before fitting the radiator it is necessary to wash out the heating system to remove any existing mud, scale, work residues, traces of flux, oil, etc.
- When the system water pH is outside the 8,5-5,5 range and/or when the dissolved is above 0,1mg/liter, it is always needed to protect the heating system components (the radiator is one of these) with a proper chemical treatment compatible with all parts in contact with water (silicon rubber too).
- In order to fit the radiator to the wall, it is necessary to choose the proper fixings for the wall material.
- If the system water exceeds 50C, please install a warning mark near the radiator to avoid any accidental scalding.
- Clean the radiator surface only with a soft cloth to avoid scratching the finish and do not use chemical agents during cleaning operations. It is prohibited to climb on the radiator.
- Maximum working temperature 95C, maximum working pressure 4 bar.

VICARI (for 8,10,12 and 14 tubes) INSTALLATION GUIDE

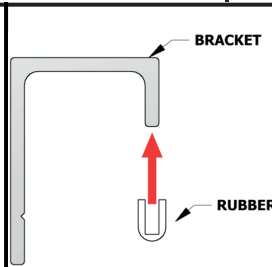
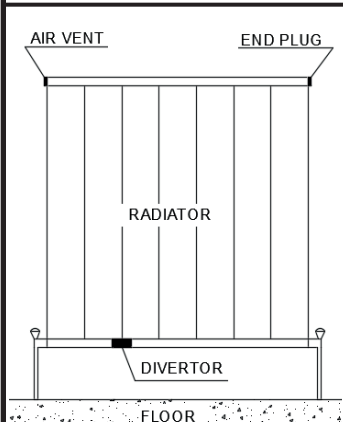
This product must be fitted only by a fully qualified installer.



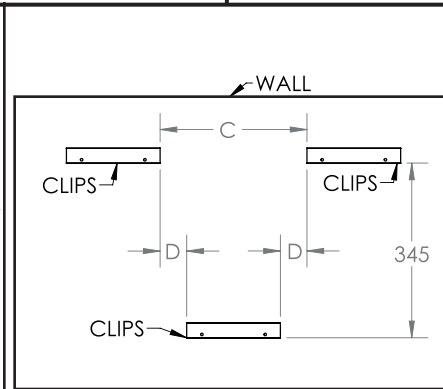
CLIPS 3 PCS	
WALL ANCHORS 6 PCS	
FIXING SCREWS 6 PCS	
CAP 2 PCS	
END PLUG 1 PCS	
AIR VENT 1 PCS	
RUBBER 3 PCS	



This picture represents behind look of a double type radiator with 10 tubes.



Use the Rubber !



The installation guide for wall clips.

NAMES		A	B	C	D	TUBE QTY	DA	DM	DO
VICARI (DOUBLE)	600	800	545	220	15	8	26	57	88
VICARI (SINGLE)	600	1000	545	420	115	10	22	35	66
VICARI (SINGLE)	600	1200	545	620	215	12	22	35	66
VICARI (SINGLE)	600	1400	545	820	315	14	22	35	66
VICARI (DOUBLE)	600	800	545	220	15	8	26	57	88
VICARI (DOUBLE)	600	1000	545	420	115	10	26	57	88
VICARI (DOUBLE)	600	1200	545	620	215	12	26	57	88
VICARI (DOUBLE)	600	1400	545	820	315	14	26	57	88

GENERAL RECOMMENDATION

- Before fitting the radiator it is necessary to wash out the heating system to remove any existing mud, scale, work residues, traces of flux, oil, etc.
- When the system water pH is outside the 8,5-5,5 range and/or when the dissolved is above 0,1mg/liter, it is always needed to protect the heating system components (the radiator is one of these) with a proper chemical treatment compatible with all parts in contact with water (silicon rubber too).
- In order to fit the radiator to the wall, it is necessary to choose the proper fixings for the wall material.
- If the system water exceeds 50°C, please install a warning mark near the radiator to avoid any accidental scalding.
- Clean the radiator surface only with a soft cloth to avoid scratching the finish and do not use chemical agents during cleaning operations. It is prohibited to climb on the radiator.
- Maximum working temperature 95°C, maximum working pressure 4 bar.