

# SAGITTARIUS

## TAPS & SHOWERING

|                                      |  |
|--------------------------------------|--|
| <b>Construction</b>                  | Brass Body (CuZn38Pb18); ABS Handles   |
| <b>Finishes</b>                      | Chrome plated to BS EN 248   |
| <b>Product Type</b>                  | Contemporary   |
| <b>Water Pressure Tested Between</b> | Min. 0.2 bar (Handset) 1.0 bar (Spout), Max. 6.0 bar   |
| <b>Standards</b>                     | Complies with BS EN 1111   |
| <b>Certification</b>                 | Manufactured to comply with WRAS & TMV2  |
| <b>Cartridge</b>                     | Thermostatic cartridge   |
| <b>Diverter</b>                      | Integrated Ceramic disc valve diverter   |
| <b>Check valve</b>                   | 0.5-10 gpm   |
| <b>Fitting</b>                       | Brass Easy Fit (15mm compression connection) supplied;<br>One Brass G3/4" and One G1/2" BSP Male thread outlet connection  |
| <b>Guarantee</b>                     | 10 years against manufacturing faults (excluding serviceable parts)  |
| <b>Additional Information</b>        | Temperature: Pre-set 38°C, with push button override to 48°C<br>Automatic shut off in the event of hot or cold water supply failure<br>Cool Touch Bar Valve technology<br>Chrome Stainless steel adjustable riser rail<br>Chrome ABS 200mm shower head<br>Handset : Chrome , ABS , Select 3 modes , G1/2" BSP<br>Hose : Chrome , smooth PVC , 1.5m , G1/2" BSP |

### PADUA LOW PRESSURE EXPOSED VALVE AND RISER KIT CHROME SS/619/C

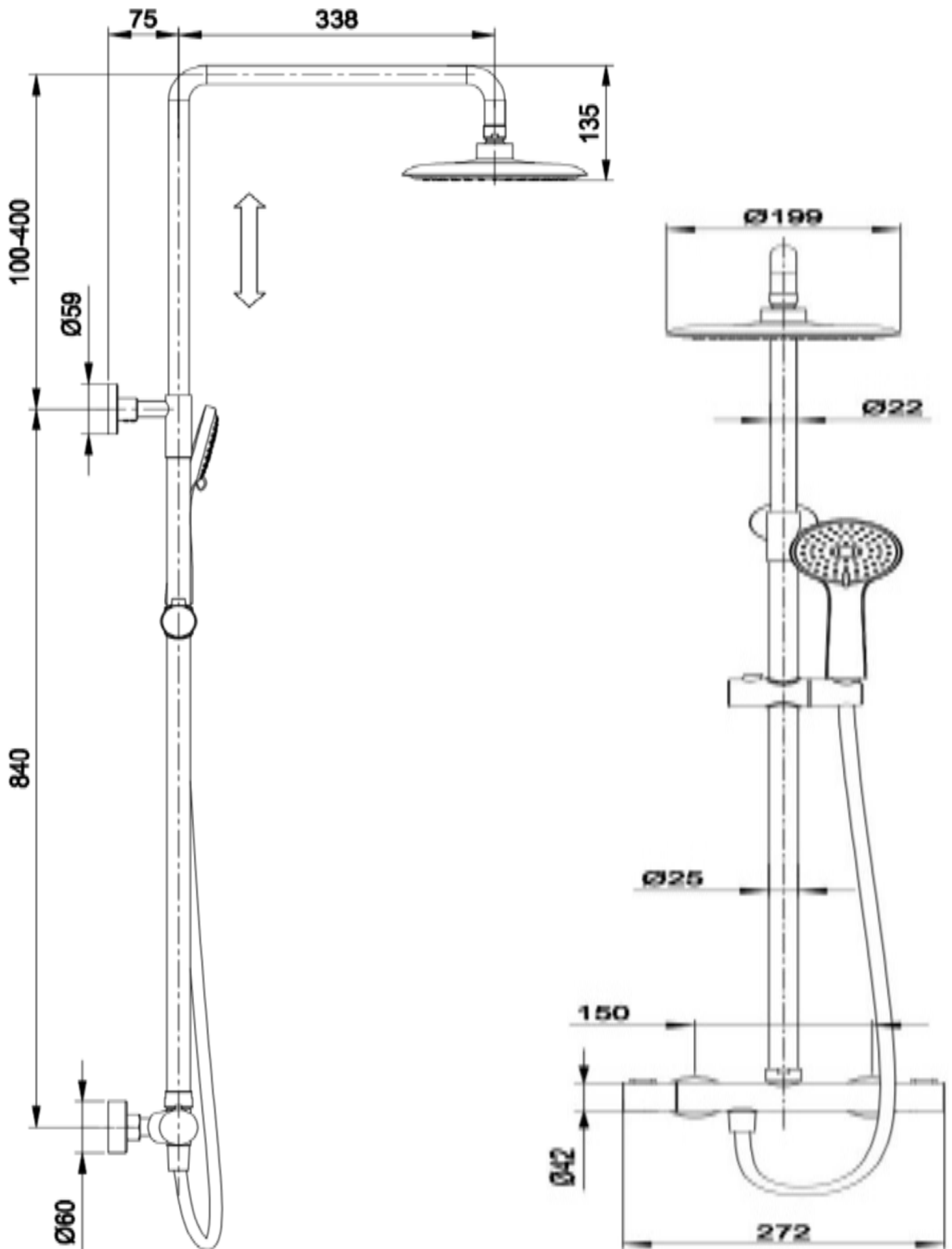


The information contained on this page was correct at the date of issue. Fitting dimensions are provided as a guide only. Some variation may occur due to manufacturing tolerances. We pursue a policy of continuing improvement in design and performance of our products and so reserve the right to change specifications without prior notice

FOR FURTHER ADVICE PLEASE CONTACT :-

SAGITTARIUS LTD UNIT 1 LOWER VICTORIA STREET—CHADDERTON—OLDHAM—OL9 9TU TEL:0616 6202029

EMAIL:TECHNICAL@SAGITTARIUSTAPS.CO.UK



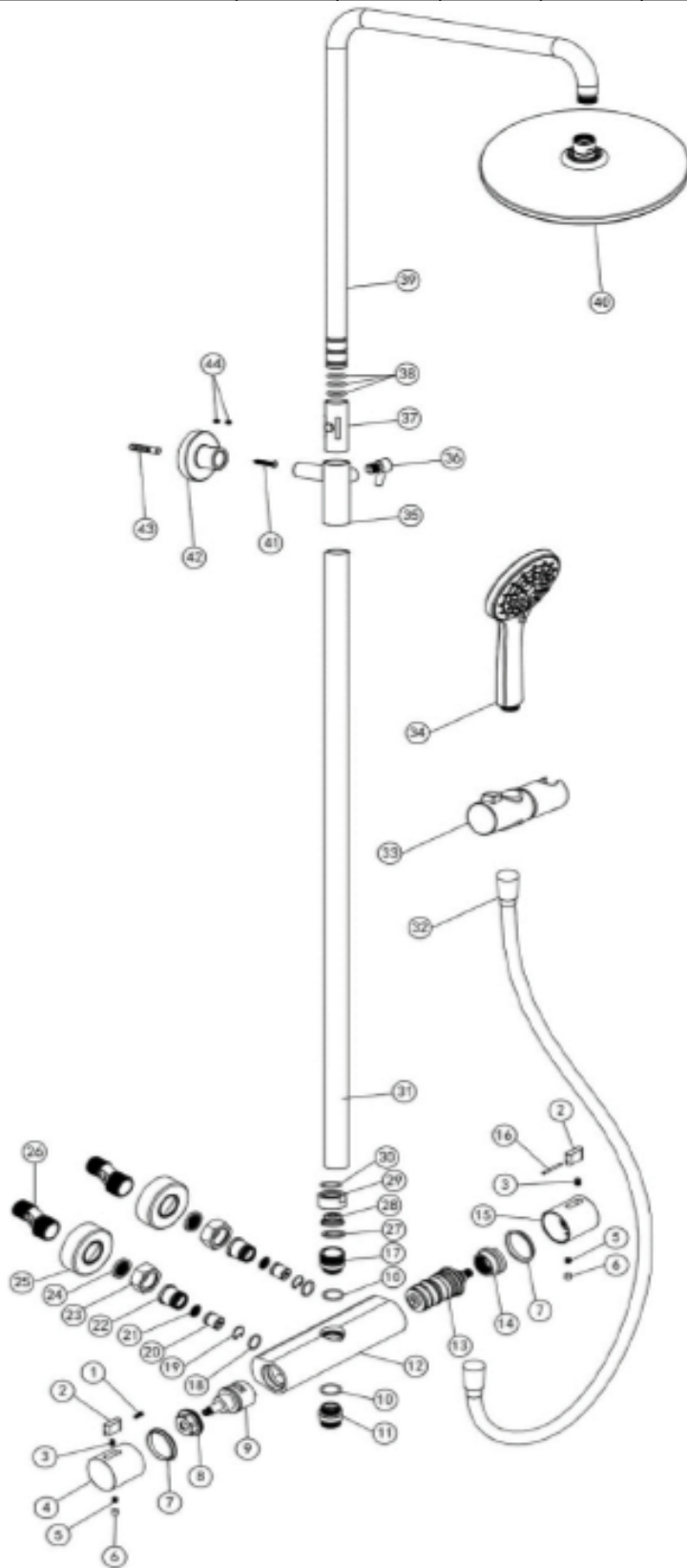
FOR FURTHER ADVICE PLEASE CONTACT :-

SAGITTARIUS LTD UNIT 1 LOWER VICTORIA STREET—CHADDERTON—OLDHAM—OL9 9TU TEL:0616 6202029

EMAIL:TECHNICAL@SAGITTARIUSTAPS.CO.UK

Flow Rates (Litres per minute)

| System Pressure   | 0.1 Bar | 0.2 Bar | 0.3 Bar | 0.5 Bar | 1.0 Bar | 1.5 Bar | 2.0 Bar | 3.0 Bar | 4.0 Bar | 5.0 Bar |
|-------------------|---------|---------|---------|---------|---------|---------|---------|---------|---------|---------|
| (without Handset) | 4.7     | 7.0     | -       | 11.0    | 12.6    | 15.8    | 18.2    | 22.9    | 26.5    | 29.8    |
| (with Handset)    | 2.9     | 4.7     | 5.7     | 7.2     | 10.1    | 12.4    | 14.3    | 17.9    | 20.9    | 23.5    |



|     |                  |     |
|-----|------------------|-----|
| 44  | SCREW            | 2   |
| 43  | PLUG             | 1   |
| 42  | WALL-FIX-PLATE   | 1   |
| 41  | SCREW            | 1   |
| 40  | SHOWER HEAD      | 1   |
| 39  | RAIL-PIPE-UPPER  | 1   |
| 38  | O-RING           | 3   |
| 37  | PLASTIC          | 1   |
| 36  | HANDLE           | 1   |
| 35  | PIPE CONNECTOR   | 1   |
| 34  | HANDSET          | 1   |
| 33  | HANDSET HOLDER   | 1   |
| 32  | HOSE             | 1   |
| 31  | RAIL PIPE        | 1   |
| 30  | O-RING           | 1   |
| 29  | NUT              | 1   |
| 28  | CONNECTOR        | 1   |
| 27  | WASHER           | 1   |
| 26  | OFFEST-CONNECTOR | 2   |
| 25  | WALL-COVER       | 2   |
| 24  | WASHER           | 2   |
| 23  | NUT              | 2   |
| 22  | CONNECTOR        | 2   |
| 21  | FILTER           | 2   |
| 20  | CHECK VALVE      | 2   |
| 19  | CLAMP-RING       | 2   |
| 18  | O-RING           | 2   |
| 17  | CONNCTOR         | 1   |
| 16  | LEVER ROB        | 1   |
| 15  | THERMO-HANDLE    | 1   |
| 14  | MOUNTING WASHER  | 1   |
| 13  | THERMO-CARTRIDGE | 1   |
| 12  | BODY             | 1   |
| 11  | CONNECTOR        | 1   |
| 10  | O-RING           | 2   |
| 9   | DIVERTER         | 1   |
| 8   | NUT              | 1   |
| 7   | WASHER           | 2   |
| 6   | HANDLE CAP       | 2   |
| 5   | GRUB             | 2   |
| 4   | FLOW HANDLE      | 1   |
| 3   | SPRING           | 2   |
| 2   | BUTTON           | 2   |
| 1   | SCREW            | 1   |
| No. | DESCRIPTION      | QTY |

FOR FURTHER ADVICE PLEASE CONTACT :-

SAGITTARIUS LTD UNIT 1 LOWER VICTORIA STREET—CHADDERTON—OLDHAM—OL9 9TU TEL:0616 6202029

EMAIL:TECHNICAL@SAGITTARIUSTAPS.CO.UK