

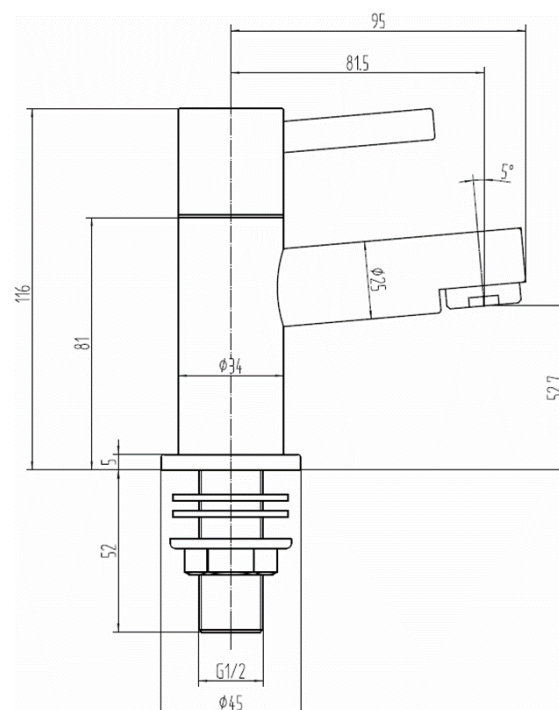
SAGITTARIUS

TAPS & SHOWERING

PIAZZA BASIN TAPS

PI/101/C

Construction	Brass Body, Zinc-alloy Handles
Finishes	Chrome plated to BS EN 248
Product Type	Contemporary
Water Pressure Tested Between	Min. 0.1 bar, Max. 6.0 bar
Standards	Complies with BS5412, BS EN200
Cartridge	1/4 Turn 1/2" Ceramic disc valves
Net Weight (Tap only)	1049g
Aerator	Laminar stream straightener
Fitting	Brass G1/2" BSP tails
Guarantee	10 years against manufacturing faults (excluding serviceable parts)
Operating Water Pressure	



LOW PRESSURE
0.2 - 0.5 bar



COMBI BOILER



HIGH PRESSURE
1.2 - 1.5+ bar

The information contained on this page was correct at the date of issue. Fitting dimensions are provided as a guide only. Some variation may occur due to manufacturing tolerances. We pursue a policy of continuing improvement in design and performance of our products and so reserve the right to change specifications without prior notice

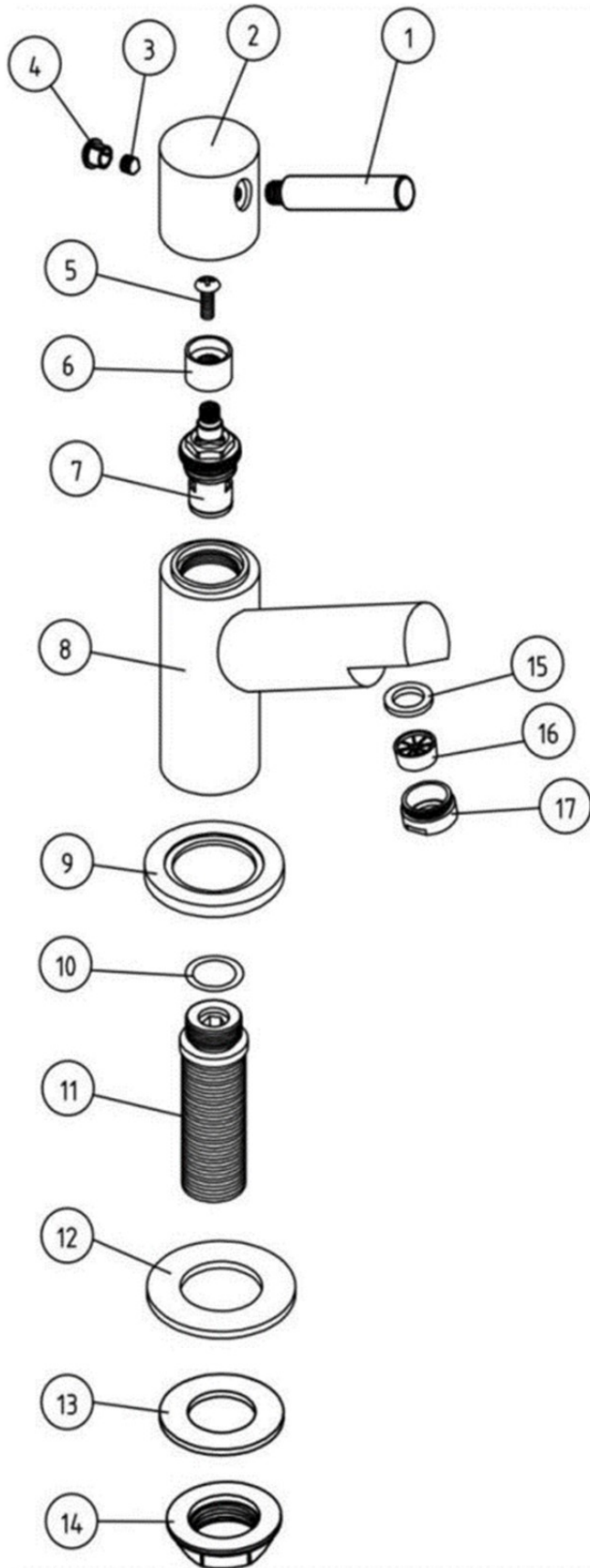
FOR FURTHER ADVICE PLEASE CONTACT :-

SAGITTARIUS LTD UNIT 1 LOWER VICTORIA STREET—CHADDERTON—OLDHAM—OL9 9TU TEL:0616 6202029

EMAIL:TECHNICAL@SAGITTARIUSTAPS.CO.UK

Flow Rates (Litres per minute)

System Pressure	0.1 Bar	0.2 Bar	0.3 Bar	0.5 Bar	1.0 Bar	1.5 Bar	2.0 Bar	3.0 Bar	4.0 Bar	5.0 Bar
	4.7	7.4	-	9.5	14.5	17.6	20.2	23.5	-	-



NO	NAME	QTY
1	HANDLE LEVER	2
2	HANDLE	2
3	GRUB SCREW	2
4	CAP	2
5	SCREW	2
6	PVC CORE	2
7	1/2" CARTRIDGE	1 PAIR
8	TAP BODY	2
9	BASE PLATE	2
10	"O" RING	2
11	1/2" BSP TAIL	2
12	O-RING	2
13	O-RING	2
14	BACKNUT	2
15	O-RING	2
16	AERATOR	2
17	NOZZEL	2

FOR FURTHER ADVICE PLEASE CONTACT :-

SAGITTARIUS LTD UNIT 1 LOWER VICTORIA STREET—CHADDERTON—OLDHAM—OL9 9TU TEL:0616 6202029

EMAIL:TECHNICAL@SAGITTARIUSTAPS.CO.UK