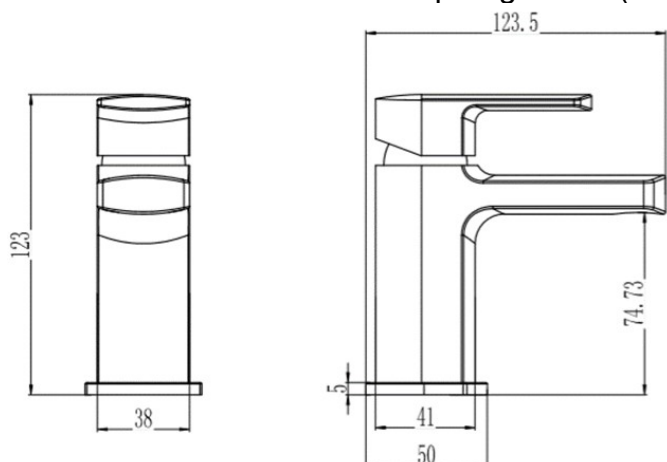


SAGITTARIUS

TAPS & SHOWERING

LATINA CLOAKROOM MON-OBLOC BASIN MIXER WITH POPUP WASTE CHROME LA/186/C

Construction	Brass Body (HPb59-1), equivalent to BS CZ122 / EN CW617N / CuZn40Pb2; Zinc-alloy Handles & Base plates
Finishes	Chrome plated to BS EN 248
Product Type	Contemporary
Water Pressure Tested Between Standards	Min. 0.2 bar, Max. 6.0 bar
Cartridge	30mm Ceramic disc cartridge
Aerator	M24*1 ABS Spout aerator
Fitting	UK: M10 x 350mm G1/2" BSP Female Flexi Tails EU: M10 x 350mm G3/8" BSP Female Flexi Tails
Guarantee	10 years against manufacturing faults (excluding serviceable parts)
Additional Information	Supplied with G1¼" sprung waste (UK only)



The information contained on this page was correct at the date of issue. Fitting dimensions are provided as a guide only. Some variation may occur due to manufacturing tolerances. We pursue a policy of continuing improvement in design and performance of our products and so reserve the right to change specifications without prior notice

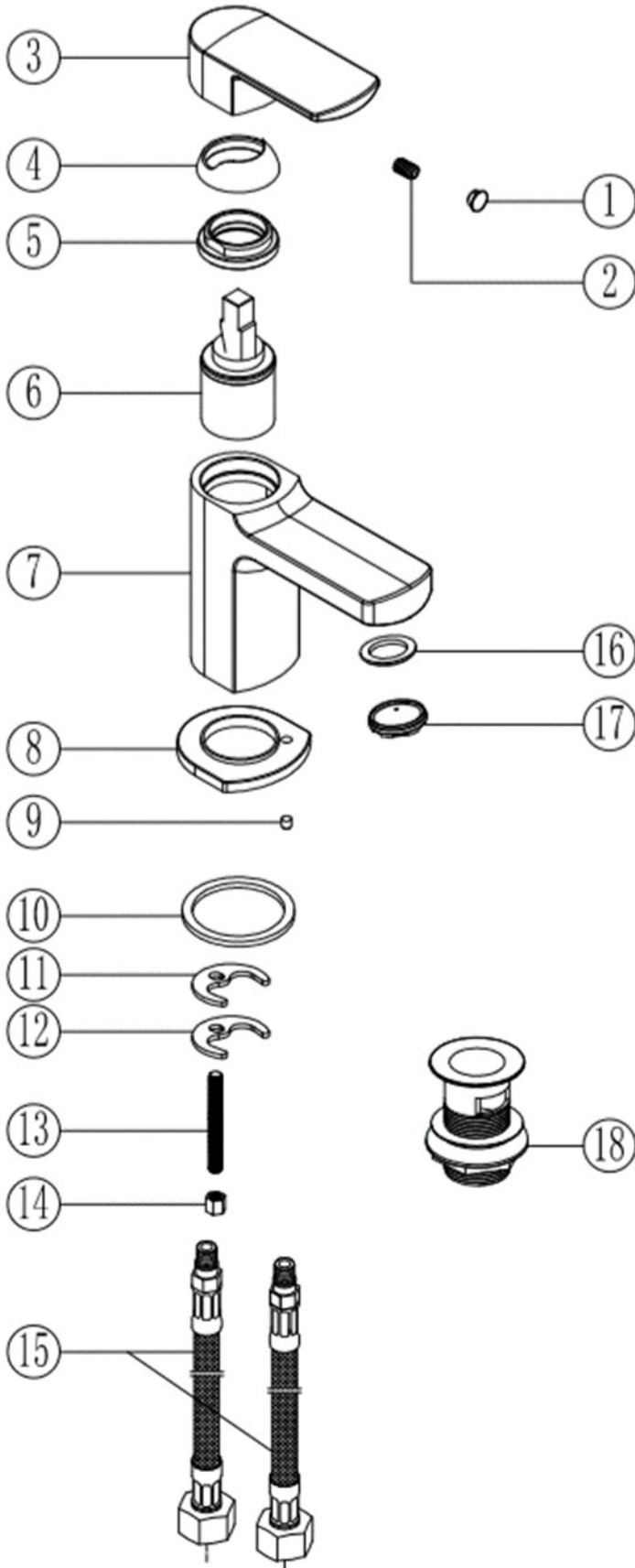
FOR FURTHER ADVICE PLEASE CONTACT :-

SAGITTARIUS LTD UNIT 1 LOWER VICTORIA STREET—CHADDERTON—OLDHAM—OL9 9TU TEL:0616 6202029

EMAIL:TECHNICAL@SAGITTARIUSTAPS.CO.UK

Flow Rates (Litres per minute)

System Pressure	0.2 Bar	0.3 Bar	0.5 Bar	1.0 Bar	1.5 Bar	2.0 Bar	3.0 Bar	4.0 Bar	5.0 Bar
	4.4	-	6.7	9.5	11.7	13.7	16.5	-	-



NO.	PARTS DESCRIPTION	QTY
1	PLASTIC COVER CAP	1
2	S/S HANDLE GRUB SCREW	1
3	ZINC-ALLOY HANDLE	1
4	PLASTIC HANDLE COLLAR	1
5	BRASS CARTRIDGE NUT	1
6	30MM CERAMIC CARTRIDGE	1
7	BRASS TAP BODY	1
8	ZINC-ALLOY BASE PLATE	1
9	S/S BASE PLATE GRUB SCREW	1
10	NBR BASE PLATE WASHER	1
11	HORSE-SHOE WASHER	1
12	HORSE-SHOE STEEL PLATE	1
13	STEEL FIXING ROD	1
14	BRASS FIXING NUT	1
15	G1/2" BSP S/S FLEXI-TAIL	2
16	NBR AERATOR WASHER	1
17	24*1 ABS AERATOR	1
18	G1-1/4" ZINC-ALLOY SPRUNG WASTE	1

FOR FURTHER ADVICE PLEASE CONTACT :-

SAGITTARIUS LTD UNIT 1 LOWER VICTORIA STREET—CHADDERTON—OLDHAM—OL9 9TU TEL:0616 6202029

EMAIL:TECHNICAL@SAGITTARIUSTAPS.CO.UK