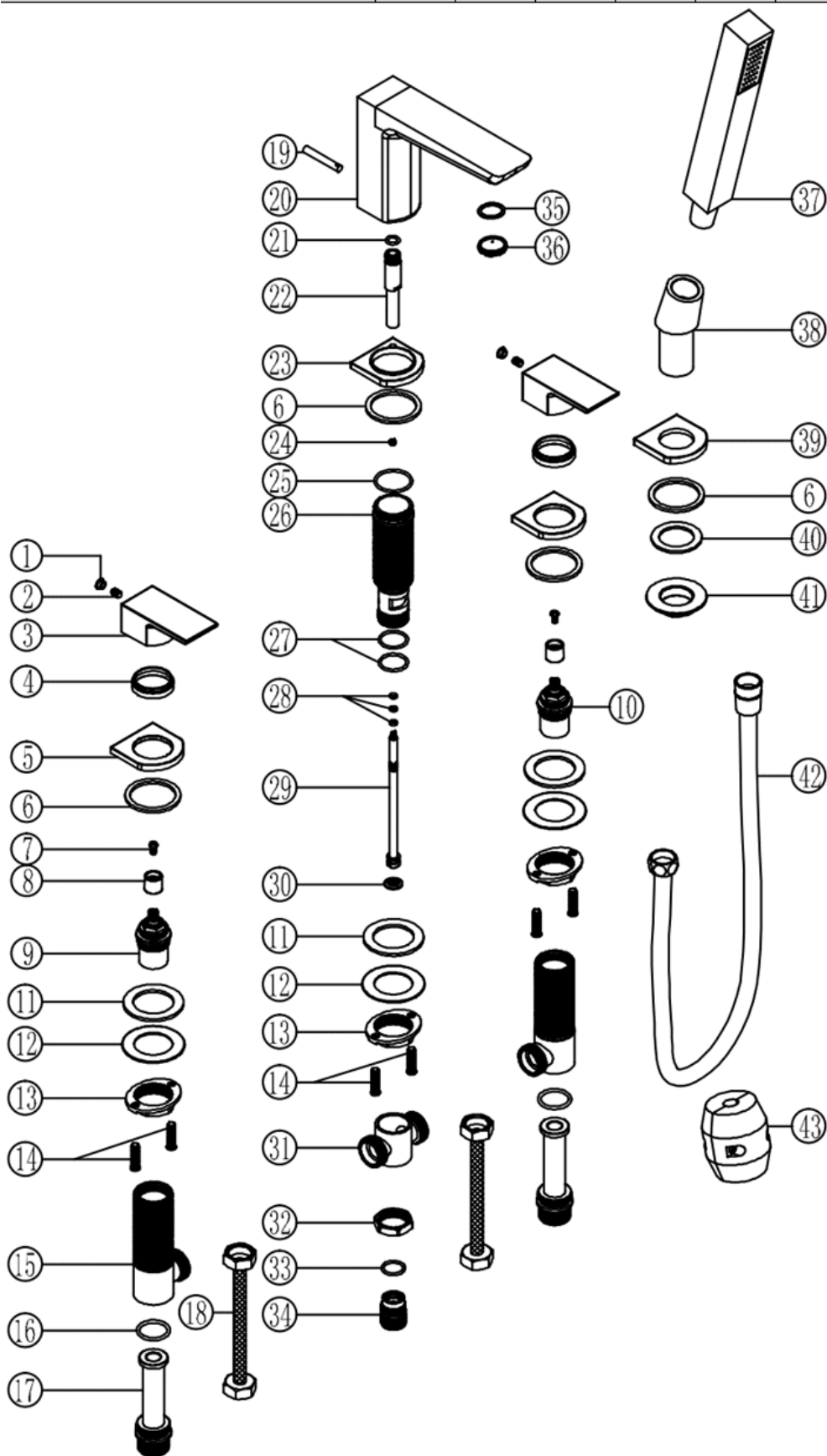




**Flow Rates** (Litres per minute)

System Pressure	0.1 Bar	0.2 Bar	0.3 Bar	0.5 Bar	1.0 Bar	1.5 Bar	2.0 Bar	3.0 Bar	4.0 Bar	5.0 Bar
	-	10.6	-	14.0	21.8	26.5	30.8	38.1	-	-



No.	DESCRIPTION	QTY
1	Dia. 6.8 COVER CAP	2
2	M5*8 GRUB SCREW	2
3	HANDLE	2
4	HANDLE COLLAR	2
5	BASE PLATE	2
6	46*38*2.5 WASHER	3
7	CARTRIDGE SCREW	2
8	PVC CORE	2
9	G3/4" HOT CARTRIDGE	1
10	G3/4" COLD CARTRIDGE	1
11	NBR WASHER	3
12	S/STEEL WASHER	3
13	LOCKING NUT	3
14	M6*25 FIXING SCREW	6
15	BSP TAIL	2
16	28*2.5 O-RING	2
17	G3/4" WATER INLET	2
18	G3/4" FLEXITAIL	1
19	DIVERTER ROD	1
20	SPOUT BASE PLATE	1
21	31*2 O-RING	1
22	M12*1 DIVERTER	1
23	SPOUT BASE PLATE	1
24	M4*6 GRUB SCREW	2
25	31*2 O-RING	1
26	M30X1.5 SPOUT CONNECTOR	1
27	25*2 O-RING	2
28	7*1.6 O-RING	3
29	DIVERTER STEM	1
30	DIVERTER STEM WASHER	1
31	4-WAY CONNECTOR	1
32	M25*1 BRASS NUT	1
33	32*1.5 NBR WASHER	1
34	G1/2" CONNECTOR NUT	1
35	AERATOR WASHER	1
36	M24*1 AERATOR	1
37	SHOWER HANDSET	1
38	HANDSET HOLDER	1
39	HANDSET BASE PLATE	1
40	3/4" NBR WASHER	1
41	M28*1.5 BRASS LOCK NUT	1
42	1.5m SHOWER HOSE	1
43	RUBBER WEIGHT	1

FOR FURTHER ADVICE PLEASE CONTACT :-  
 SAGITTARIUS LTD UNIT 1 LOWER VICTORIA STREET—CHADDERTON—OLDHAM—OL9 9TU TEL:0616 6202029  
 EMAIL:TECHNICAL@SAGITTARIUSTAPS.CO.UK