

# SAGITTARIUS

## TAPS & SHOWERING

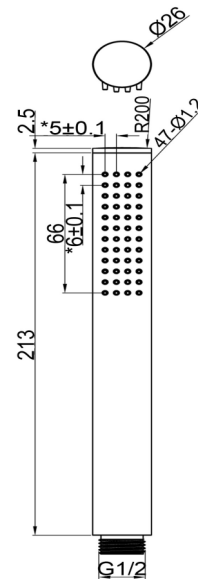
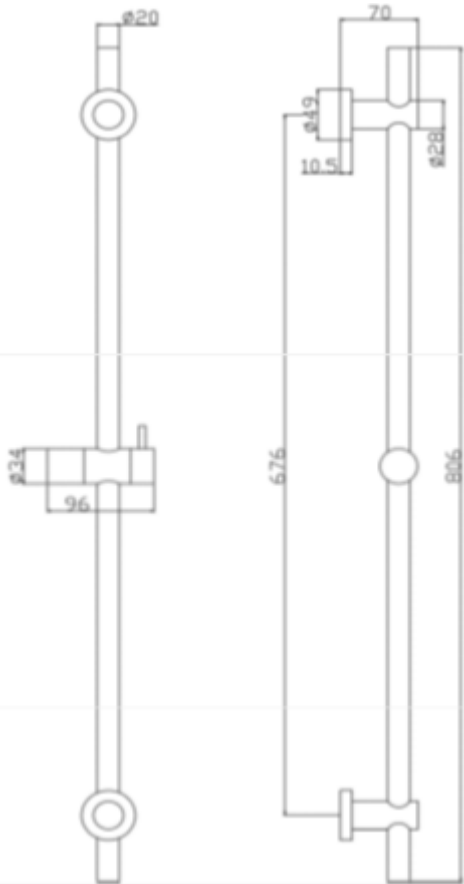
<b>Construction</b>	Brass, Stainless steel
<b>Finishes Product Type</b>	Brushed Brass Contemporary
<b>Water Pressure</b>	
<b>Tested Between</b>	Min. 1.0 bar, Max. 6.0 bar
<b>Guarantee</b>	5 year against manufacturing faults (excluding serviceable parts)

### ERGO LEVER SLIDE RAIL KIT BRUSHED GOLD

SRK/539/BB

#### Additional Information

- Extended 800mm slide rail
- Brass shower handset
- Adjustable brass handset holder
- 1.5m PVC shower hose



The information contained on this page was correct at the date of issue. Fitting dimensions are provided as a guide only. Some variation may occur due to manufacturing tolerances. We pursue a policy of continuing improvement in design and performance of our products and so reserve the right to change specifications without prior notice

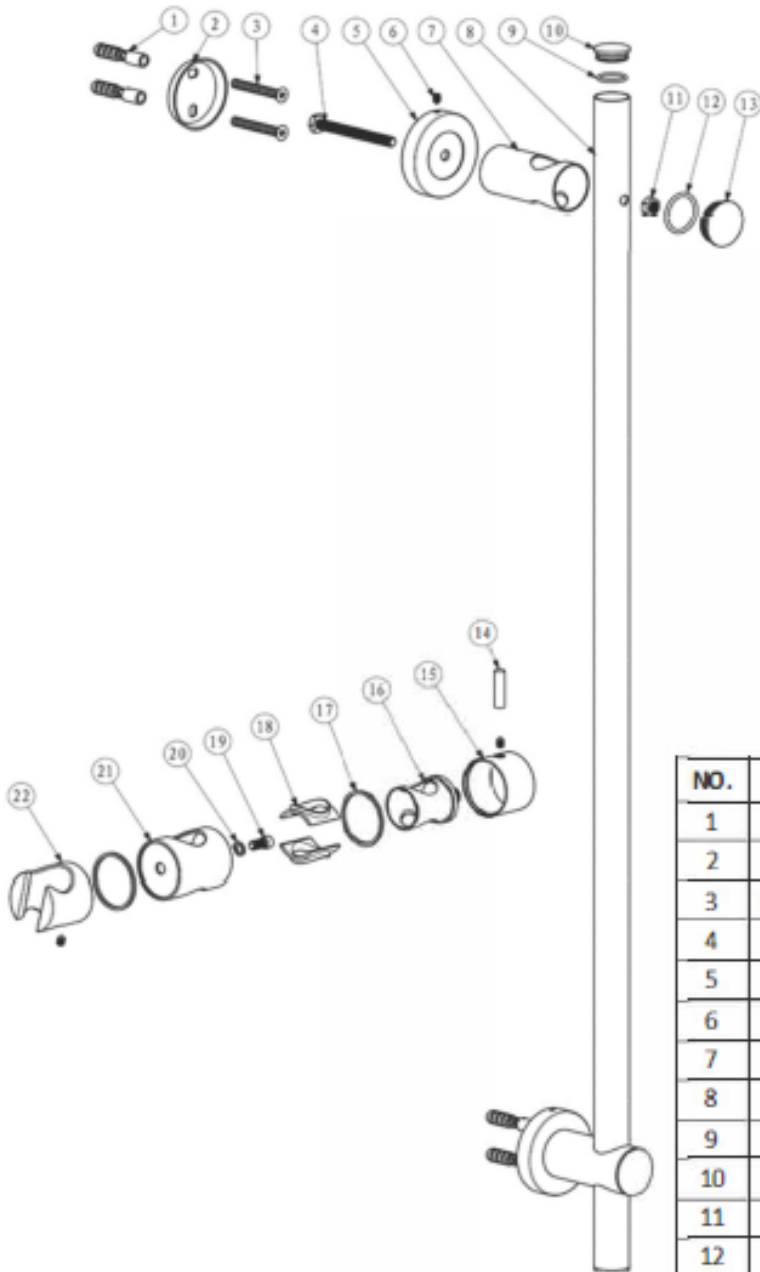
FOR FURTHER ADVICE PLEASE CONTACT :-

SAGITTARIUS LTD UNIT 1 LOWER VICTORIA STREET—CHADDERTON—OLDHAM—OL9 9TU TEL:0616 6202029

EMAIL:TECHNICAL@SAGITTARIUSTAPS.CO.UK

**Flow Rates (Litres per minute)**

System Pressure	0.1 Bar	0.2 Bar	0.3 Bar	0.5 Bar	1.0 Bar	1.5 Bar	2.0 Bar	3.0 Bar	4.0 Bar	5.0 Bar
	-	-	-	-	5.0	-	7.0	8.5	-	11.0



NO.	DESCRIPTION	QTY
1	ABS WALL PLUG	4
2	S/STEEL WALL BRACKET BASE	2
3	M4x30 S/STEEL SELF-TAPPING SCREW	4
4	M4x30 S/STEEL SCREW	2
5	BRASS BASE PLATE	2
6	M4x5 S/STEEL GRUB SCREW	4
7	BRASS TUBE CONNECTOR	2
8	Ø20 S/STEEL RAIL	1
9	Ø17*1.5 NBR O-RING	2
10	BRASS RAIL END COVER CAP	2
11	M6 S/STEEL NUT	2
12	Ø25*2 NBR O-RING	2
13	BRASS DECORATIVE COVER	2
14	BRASS HANDLE ROD	1
15	BRASS HANDLE BODY	1
16	ABS HANDSET HOLDER INSERT	1
17	Ø32*Ø29*1.5 POM WASHER	2
18	ABS GREY WASHER	2
19	M6x10 S/STEEL GRUB SCREW	1
20	S/STEEL CIRCLIP	1
21	BRASS HANDSET HOLDER BODY	1
22	ABS HANDSET HOLDER BRACKET	1

FOR FURTHER ADVICE PLEASE CONTACT :-

SAGITTARIUS LTD UNIT 1 LOWER VICTORIA STREET—CHADDERTON—OLDHAM—OL9 9TU TEL:0616 6202029

EMAIL:TECHNICAL@SAGITTARIUSTAPS.CO.UK