

SHOWER TRAY ARCHITECTURA

PRODUCT INFORMATION

1 . POSITION



Article number	UDA1080ARA215V-3S
Article title	Villeroy & Boch Architectura Rectangular shower tray, 1000 x 800 x 15 mm, Grey
Product designation	Rectangular shower tray
Collection	Architectura
Assembly / Assembly type	Surface-mounted, Corner installation flush-fitting installation Installation on a base
Assembly instructions	With MetalRim and an edge height of 15mm, we recommend the use of a composite seal in accordance with ETAG 022 on the floor structure below the shower tray in order to prevent any moisture from penetrating the floor structure., The installation height of the shower tray can be reduced by 30 mm if the Viega outlet fitting art. no. 634 100 is used. Please note: this outlet fitting does not conform to EN 274.
Drainage rate in l/min	53
Scope of delivery	1 x rectangular shower tray , 1 x outlet cover in White Alpine (01), for matt colours, outlet cover in matching matt colours.
Ordering information	Supplied without support frame / base.
Length in mm	1000
Width in mm	800
Height in mm	15
Interior depth	15
Weight in kg	14,00
Material	Acrylic
Colour name	Grey
With feet/base	No
Other material	Outlet cover: Acrylic
Other surfaces	Outlet cover: matt
With bath support	No
Anti-slip class	Anti-slip class B
EAN number	4051202383626

COLOUR

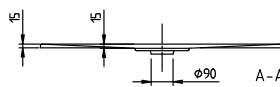
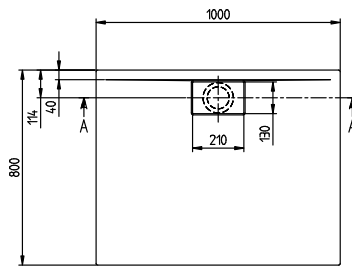
COLOUR DESIGNATION




Grey

TECHNICAL DRAWINGS

UDA1080ARA215V-3S



ARCHITECTURA METAL	 Villeroy & Boch 1748
RM 1000x800	
UDA1080ARA215	
V02 / 31-03-2021	